



Engine Parts Book

September 10, 2020

TIMCO Parts Return Policy

TIMCO stock items must be returned within **30 days** of invoice date and to be credited at 100% purchase price with no restocking fee, less inbound and outbound shipping costs. No returns after 30 days after invoice date.

Special order items must be returned within **10 business days** of invoice date will receive a refund at 65% of purchase price and if our vendor allows returns. Inbound, outbound and return freight cost; custom charges and vendor restocking charge, if applicable, will be deducted from credit.

The parts must be in their original packaging and in sellable condition.

TIMCO shipping errors or defective parts must be returned within **10 business days** of invoice date. Inbound and outbound freight charge will be credited. Replacement parts will be invoiced, and a credit will be issued upon return. In most cases, TIMCO will issue a return label. Parts can also be returned collect on TIMCO's preferred vendor.

It is at TIMCO's discretion, whether the credit is refunded by check or account credit.

Return authorization number is required for proper credit. Put RA # on outside of the box.



TABLE OF CONTENTS

AJAX	7
Carburetor Kits	8
Carburetor Parts.....	8
Head Gaskets	9
Gasket Sets.....	9
Miscellaneous Gaskets.....	10
Rod Packing.....	11
Piston Rings.....	12
Crosshead Pins & Bushings	12
Rod Bearing & Shims.....	13
Governor Kits & Parts.....	13
Lubricators & Lubricator Parts	13
Radiators	14
Safety Switches & Gauges.....	14
Water Pipes & Water Necks.....	15
Spark Plugs & Spark Plug Wires	15
Fan Belts & Belt Guards	15
Fans, Fan Repair Kits, and Fan Parts	16
Oil Lines.....	16
Starters & Repair Kits	16
Starter Parts	17
Jumper Cables (Custom length available upon request)	18
Overspeed Switch & Bolt Assemblies	18
Miscellaneous Ajax Parts	19
Hardware & Tools	20
Mag Drive Assembly & Repair Kit	20
Gasoline Flywheel Starter	21
Pilot Bearing Housings, Bearing, and Kits	21
Mufflers.....	21
Clutch Assemblies (Includes Drive Ring, Handle, and Pilot Bearing)	22
7-1/4 x 8 CMA, EA-30 Overhaul List.....	23
7-1/2 x 10 CMA, E-30 Overhaul List	24
8-1/2 x 10 CMA, E-42 Overhaul List.....	25
DP-60 Overhaul List.....	26
DP-80 Overhaul List.....	27
Arrow Engine	28
Carburetor Kits.....	29
Carburetor Related Parts	29

TABLE OF CONTENTS

Head Gaskets	29
Gasket Sets.....	30
Miscellaneous Gaskets.....	30
Piston Assemblies	31
Piston Ring Sets.....	31
Wrist Pin & Bushing	31
Connecting Rod Bearing & Shims.....	32
Cylinder Sleeves & Gaskets.....	32
Cylinder Heads & Cylinder Head Repair Kits.....	32
Governor Repair Kit & Accessories	33
Rocker Arm Parts	33
Valves & Valve Covers.....	33
Valve Guides.....	34
Valve Seats	34
Spark Plug Wire Assemblies	34
Oil Pumps and Oil Pump Repair Kits	35
Oil Filter Kit.....	35
Oil Line Kits.....	35
Oil Lines & Fittings.....	35
Fan & Fan Hub Assemblies.....	36
Miscellaneous Fan Parts.....	37
Miscellaneous Parts	37
Clutch Assemblies	38
Clutch Conversion Kits (Single to Double Bearing)	38
C-46 Overhaul List	40
C-66 Overhaul List	41
C-96 Overhaul List	42
C-106 Overhaul List	43
Fairbanks-Morse	44
Carburetor Kits	45
Carburetor Related Parts	45
Head Gaskets	46
Gasket Sets.....	46
Piston Ring Sets.....	49
Wrist Pin & Bushing	48
Connecting Rod Bearings & Shims.....	48
Valve Kits.....	52
Miscellaneous Valve Parts	52
Valve Guides.....	53
Spark Plug Wire Assembly.....	54
Clutch Drive Plates	54
Oil-Less Bronze Bushings.....	54
Fan & Fan Hub Assemblies.....	54

TABLE OF CONTENTS

Flywheel Ignition Kits	55
IMPCO	56
Carburetors	57
Mixer Assemblies	57
Carburetor Parts.....	57
Dry Air Cleaner Assemblies & Accessories.....	60
Vortex Oil Bath Air Cleaners	61
Clutches	62
Clutch Assemblies	63
Friction Plates.....	63
Drive Rings	64
Hub & Back Plates	65
Clutch Shafts	65
Operating Shafts	65
Sliding Sleeve Assemblies.....	66
Brass Collars	66
Yokes	66
Pilot Bearings	67
Main Bearings	67
Miscellaneous Parts	67
C106 Parts	69
C106 Double Bearing Parts	70
C107 Parts	71
C107 Double Bearing Parts	72
C108 Parts	73
C110 Parts	74
SP111 Parts	75
SP211 Parts	76
SPE211 Parts	77
SP114 Parts	78
SPE114 Parts	79
SP214 Parts	80
SPE214 Parts	81
SP314 Parts	82
SPE314 Parts	83
Miscellaneous	84
Ignition Parts	85
Witte Engine Parts	85
Lufkin Engine Parts.....	85
Ford Governor	86
Gemini G26	86

Waukesha.....86

Gaskets..... 87

Ajax.....88

Arrow90

Fairbanks-Morse92

Turbo93

Lufkin.....93

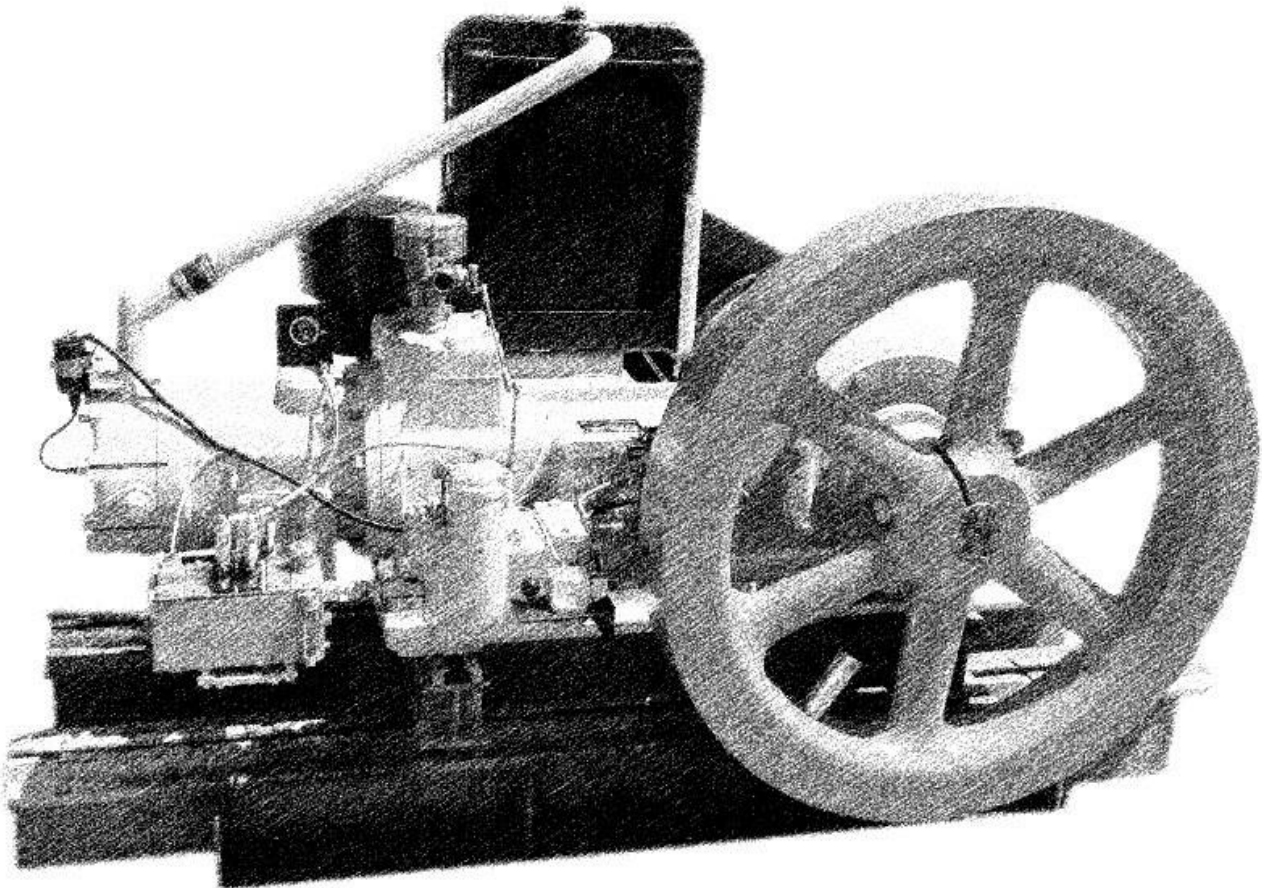
Gemini93

IMPCO93

TIMCO **SERVICE & SUPPLY**

AJAX

Model WL though DP-80



Carburetor Kits

TK-CMA-8	8" Stroke Engines, CMA Carburetor w/ Fuel Valve
TK-CMA-8-AH	8" Stroke Engines, CMA Carburetor w/ Air Horn Adapter
TK-CMA-8-WBV	8" Stroke Engines, CMA Carburetor w/ Butterfly Valve
TK-2230	EA-22/EA-30 Carburetor w/ bracket and Fuel Valve
TK-CMA-10	10" Stroke Engines, CMA Carburetor w/ Fuel Valve
TK-CMA-10-AH	10" Stroke Engines, CMA Carburetor w/ Air Horn Adapter
TK-CMA-10-WBV	10" Stroke Engines, CMA Carburetor w/ Butterfly Valve
TK-42	E-30/E-42 Carburetor w/ Bracket and Butterfly Valve
TK-42-WBV	E-30/E-42 Carburetor w/ Bracket and Butterfly Valve
TK-60	DP-60 Carburetor w/ Bracket and Fuel Valve
TK-70-230	DP-70 through DP-230 Carburetor Kit

Carburetor Parts

258AV	2-5/8" Air Vent Hose
300AV	3" Air Vent Hose
400AV	4" Air Vent Hose
9943	Curved Hose for TK-60/TK-70-230 Carburetor Kits
AB1-54	Fuel Valve
AH-2625	Air Horn Adapter, 2-5/8" Bore
BH-601	TK-70-230 Bell Housing (Sold with FA-600)
BM-10473	Needle Bearing for Cast Iron Fuel Valve
BM-10474	Needle Bearing for Cast Iron Fuel Valve
BM-10879	Throttle Rod End
CAST-30	TK-2230 Carburetor Bracket
CAST-42	TK-42 Carburetor Bracket
CAST-60	TK-60 Carburetor Bracket
FA-600	TK-70-230 Flange Adapter (Sold with BH-601)
S-78	7-1/4 x 8 CMA Air Cleaner, Oil Bath
S-110-E	8-1/2 x 10 CMA Air Cleaner, Oil Bath
SA-60	5-1/2 x 6 WL Air Cleaner, Oil Bath
SA-120	E-30, EA-30, E-42, DP-60 Air Cleaner Oil Bath

<u>GILLETTE LOCATION</u> 100 N HIGHWAY 14-16 PO BOX 3200 GILLETTE, WY 82716 P: (307) 682-5262 F: (307) 682-2240	<u>OKLAHOMA LOCATION</u> 1021 NE 29 TH ST OKLAHOMA CITY, OK 73129 P: (405) 602-6927 F: (405) 602-6933	<u>TIMCOSERVICE.COM</u> INFO@TIMCOSERVICE.COM TOLL FREE: (800) 688-4620	8
--	--	---	---

TAC-250-KIT	Dry Element Air Cleaner for CMA Engines
TAC-300-KIT	Dry Element Air Cleaner for E & EA Series Engines

Head Gaskets

A-3954-F	WL Grafoil Head Gasket
A-3650-F	EA-22 Grafoil Head Gasket
A-3650-GHD	EA-22 Heavy Duty, Grafoil Head Gasket
A-3750-F	EA-30 Grafoil Head Gasket
A-3750-GHD	EA-30 Heavy Duty, Grafoil Head Gasket
M-1550-F	E-30 Grafoil Head Gasket
M-1550-GHD	E-30 Heavy Duty, Grafoil Head Gasket
A-3204-F	E-42 Grafoil Head Gasket
A-3204-GHD	E-42 Heavy Duty, Grafoil Head Gasket
A-3205	8-1/2 X 10 CMA 2 Piece Head Plate Gasket
A-3834-H	DP-60 Grafoil Head Gasket
A-3834-GHD	DP-60 Heavy Duty, Grafoil Head Gasket
A-2804-G	DP-80 Grafoil Head Gasket
A-2804-GHD	DP-80 Heavy Duty, Grafoil Head Gasket
A-3788	DP-81 Grafoil Head Gasket
A-433-M	DP-115 Grafoil Head Gasket

Gasket Sets

TGS-154	7-1/4 x 8 CMA/EA-30 Cylinder Change Gasket Set
TGS-156	8-1/2 x 10 CMA/E-42 Cylinder Change Gasket Set
TGS-157	DP-60 Cylinder Change Gasket Set
TGS-158	DP-80 Cylinder Change Gasket Set
TGS-6780-A	6-1/2 x 8 CMA-EA-22 Overhaul Gasket
TGS-6789-A-C	7-1/4 x 8 CMA/EA-30 Overhaul Gasket Set
TGS-6790-B	8-1/2 x 10 CMA/E-42 Overhaul Gasket Set
TGS-7043-A	DP-60 Overhaul Gasket Set
TGS-6979-C	DP-80 Overhaul Gasket Set

GILLETTE LOCATION 100 N HIGHWAY 14-16 PO BOX 3200 GILLETTE, WY 82716 P: (307) 682-5262 F: (307) 682-2240	OKLAHOMA LOCATION 1021 NE 29 TH ST OKLAHOMA CITY, OK 73129 P: (405) 602-6927 F: (405) 602-6933	TIMCOSERVICE.COM INFO@TIMCOSERVICE.COM TOLL FREE: (800) 688-4620	9
--	--	---	----------

Miscellaneous Gaskets

150-4F	4" Full Face Pipe Gasket
A-1181	Exhaust Flange Gasket, 6"
A-1181-8	Exhaust Flange Gasket, 8"
A-1669-B	Cover Plate Gasket
A-1717	DP-60/80 Rear Cover Gasket
A-2227-A	Bearing Support Gasket
A-2233-T	DP80/115 Side Cover Gasket
A-2247-D	Spiral Gear Cover Gasket
A-2269	Layshaft Stand Gasket
A-2569	Water Connector Gasket
A-2588A	Mixer Box to Air Horn Gasket, DP-80/115
A-2588-A	Mixer Box to Air Horn Gasket, DP-80/115
A-2764-A	Bearing Support Cover Gasket
A-2781	Water Inlet Gasket, DP-115
A-2784	Throttle Valve Cover Gasket
A-2838-B	Lubrication Bracket Gasket
A-2839	Bearing Support Cover Gasket
A-2846-A	Gasket, Flat Round
A-2939	DP-80 Bearing Support Gasket
A-3126	Control Box Gasket
A-3131	Layshaft Gasket
A-3139	Cover Gasket
A-3167-A	Control Box Cover Oval Gasket
A-3172-A	Main Bearing Support Gasket, E42
A-3174-A	Cylinder to Bed Gasket, E-42
A-3175	Magneto Drive Gasket
A-3176	CMA Mixer Box Gasket
A-3177-A	Gasket Breather Plate
A-3178-A	Gasket-Side Cover FWS
A-3180	Gasket-Top Cylinder Cover Gasket
A-3181	Exhaust Flange Gasket, 4"
A-3183	Control Box Cover Gasket
A-3184-A	Cover Plate Gasket
A-3185	Gasket-Lubricator Bracket
A-3427	Air Cleaner to Air Horn Gasket

<u>GILLETTE LOCATION</u> 100 N HIGHWAY 14-16 PO BOX 3200 GILLETTE, WY 82716 P: (307) 682-5262 F: (307) 682-2240	<u>OKLAHOMA LOCATION</u> 1021 NE 29 TH ST OKLAHOMA CITY, OK 73129 P: (405) 602-6927 F: (405) 602-6933	TIMCOSERVICE.COM INFO@TIMCOSERVICE.COM TOLL FREE: (800) 688-4620	10
--	--	--	-----------

A-3465	Top Cylinder Gasket
A-3484-A	Spiral Gear Cover Plate Gasket, CMA
A-3672	Bearing Support Gasket
A-3676	Mixer Valve Gasket
A-3678	Layshaft Tube Flange Gasket
A-3680	Top Cylinder Cover Gasket
A-3719	Mixer Gasket
A-3720	Airhorn Gasket to Mixer Gasket
A-3752	Water Neck Gasket
A-3788	DP-81 Grafoil Head Gasket
A-3887	Exhaust Flange Gasket, 5"
A-3888-A	DP-60 Cylinder Gasket
A-3897	Side Cover Gasket, Clutch Side
A-3898	E-42/DP-60 Mixer Box Gasket
A-3899	Airhorn Gasket to Mixer Gasket
A-3954-F	WL Grafoil Head Gasket
A-4075-1	Fan Gasket
A-433-M	DP-115 Grafoil Head Gasket
BM-10022	Copper Fuel Injection Gasket
BM-10108-A	Layshaft Tube Seal
BM-10500	DP-80 Stuffing Box Gasket
BM-10501	EA-30 Stuffing Box Gasket
BM-10502	E-42/DP-60 Stuffing Box Gasket
B-1062	Clean Out Hole Gasket
K-6289	Crosshead Guide Gasket
M-1550-F	E-30 Grafoil Head Gasket
M-1550-GHD	E-30 Heavy Duty, Grafoil Head Gasket
M-2632	Governor Gasket 3 Bolt
M-2654	Gasket-Large Side Cover CS
M-2660-2	Water Connector Gasket

Rod Packing

BM-1334-B-1	EA-22/EA-30 Garlock Rod Packing
BM-1334-J-1	EA-22/EA-30 Rod Packing
BM-1333-B-1	E-42/DP-60 Garlock Rod Packing
BM-1333-K-1	E-42/DP-60 Rod Packing

<u>GILLETTE LOCATION</u> 100 N HIGHWAY 14-16 PO BOX 3200 GILLETTE, WY 82716 P: (307) 682-5262 F: (307) 682-2240	<u>OKLAHOMA LOCATION</u> 1021 NE 29 TH ST OKLAHOMA CITY, OK 73129 P: (405) 602-6927 F: (405) 602-6933	<u>TIMCOSERVICE.COM</u> INFO@TIMCOSERVICE.COM TOLL FREE: (800) 688-4620	<h1>11</h1>
--	--	---	-------------

BM-1330-E-1	DP-70/DP-80/DP-160 Rod Packing
BM-1328-L-1	DP-115/DP-230 Rod Packing

Piston Rings

TRS-100	WL Piston Ring Set
TRS-102	6-1/2 x 8 CMA Piston Ring Set
TRS-104	7-1/4 x 8 CMA Piston Ring Set
TRS-105	7-1/4 x 8 CMA Piston Ring Set, 1/8" Oversize
TRS-106	EA-30 Piston Ring Set
TRS-107	EA-30 Piston Ring Set, 1/8" Oversize
TRS-108	7-1/2 x 10 CMA Piston Ring Set
TRS-110	E-30 Piston Ring Set
TRS-112	8-1/2 x 10 CMA Piston Ring Set
TRS-113	8-1/2 x 10 CMA Piston Ring Set, 1/8" Oversize
TRS-114	E-42 Piston Ring Set
TRS-115	E-42 Piston Ring Set, 1/8" Oversize
TRS-116	DP-60 Piston Ring Set
TRS-120	DP-80 Piston Ring Set
TRS-172	EA-22 Piston Ring Set
TRS-177	6-1/2 x 8 CMA piston Ring Set, 1/16" Oversize
TRS-183	EA-42 Piston Ring Set, 1/16" Oversize

Crosshead Pins & Bushings

A-3524	EA-30 Crosshead Pin
M-1636-BR	EA-30 Crosshead Pin Bushing
M-1422-T	E-42 Crosshead Pin
M-1436-C-1-R	E-42 Crosshead Pin Bushing
A-3808	DP-60 Crosshead Pin
A-3836-1-R	DP-60 Crosshead Pin Bushing
A-1608-C	DP-60 Crosshead Pin
A-1678-1	DP-60 Crosshead Pin Bushing

<u>GILLETTE LOCATION</u> 100 N HIGHWAY 14-16 PO BOX 3200 GILLETTE, WY 82716 P: (307) 682-5262 F: (307) 682-2240	<u>OKLAHOMA LOCATION</u> 1021 NE 29 TH ST OKLAHOMA CITY, OK 73129 P: (405) 602-6927 F: (405) 602-6933	<u>TIMCOSERVICE.COM</u> INFO@TIMCOSERVICE.COM TOLL FREE: (800) 688-4620	<h1>12</h1>
--	--	---	-------------

Rod Bearing & Shims

M-2537-G	WL Rod Bearing
A-3556-B	EA-30 Rod Bearing
M-1639-B	EA-30 Laminated Shim
M-1639-B-1	EA-30 Solid Shim
A-3056-C	E-42 Rod Bearing
A-3058-A	E-42 Laminated Shim
A-3058-A-1	E-42 Solid Shim
A-3810	DP-60 Rod Bearing
A-3826-A	DP-60 Laminated Shim
A-3826-A-1	DP-60 Solid Shim
A-1656-E	DP-80 Rod Bearing
A-1659-F	DP-80 Laminated Shim
A-1659-F-1	DP-80 Solid Shim
A-3097	E-42 Connecting Rod Bolt Collar
A-3098-C	E-42 Connecting Rod Bolt
A-5455	DP-60 Connecting Rod Bolt

Governor Kits & Parts

TRK-161	Old Style (3 Bolt) Governor Repair kit w/ Weights
TRK-162	New Style (4 Bolt) Governor Repair Kit w/ Weights
BM-626-T	Governor Cross Shaft Bushing
M-2528-LK	Governor Lever Kit

Lubricators & Lubricator Parts

7003-1G	Lubricator Assembly, 4 Pint Capacity, One Pump
32091-14	Lubricator Top Gasket Material
90060	Premier Drive Gear (20 Tooth)
90132	Sight Glass Gasket
90135	Triangle Sight Glass
90175	Lubricator Pump Gasket
90199	Oil Filler Cap

<u>GILLETTE LOCATION</u> 100 N HIGHWAY 14-16 PO BOX 3200 GILLETTE, WY 82716 P: (307) 682-5262 F: (307) 682-2240	<u>OKLAHOMA LOCATION</u> 1021 NE 29 TH ST OKLAHOMA CITY, OK 73129 P: (405) 602-6927 F: (405) 602-6933	<u>TIMCOSERVICE.COM</u> INFO@TIMCOSERVICE.COM TOLL FREE: (800) 688-4620	13
--	--	---	-----------

90205	Filler Assembly
90232	Plastic Sight Glass
90234	Sight Glass Assembly
90289	Spring
90351	Lubricator Shaft, Modular Lube
90352	Bushing
90414	Lubricator Gasket, Lincoln or McCord
90417	Spring
90617	Drive Shaft Nut w/ Bushing, Modular Lube
91200-G	Lubricator Pump Assembly - Graco
91200-L	Lubricator Pump Assembly - Lincoln
91390	Sight Glass
91392	Sight Glass Assembly
92350	Gauge Glass Assembly
LO70 COUPLING	Lubricator Coupling, Keyed for Lubricator and Layshaft
LO70 SPIDER	Lubricator Spider
BM-1406	Lubricator Shaft Oil Seal

Radiators

BM-10011-NEW	E-30/E-42 Radiator
BM-10725-NEW	DP-60 Radiator
172312-S	E-42/EA-30 Radiator Cap
172312-L	E-42/EA-30 Radiator Cap, Long Reach
200R	2" Radiator Hose
275R	2.75" Radiator Hose
BM-10737	DP-60 Radiator Mount

Safety Switches & Gauges

20T-250	Temperature Gauge
L-129	Crankcase Oil Level Gauge
507-K	Oil Level Controller

<u>GILLETTE LOCATION</u> 100 N HIGHWAY 14-16 PO BOX 3200 GILLETTE, WY 82716 P: (307) 682-5262 F: (307) 682-2240	<u>OKLAHOMA LOCATION</u> 1021 NE 29 TH ST OKLAHOMA CITY, OK 73129 P: (405) 602-6927 F: (405) 602-6933	<u>TIMCOSERVICE.COM</u> INFO@TIMCOSERVICE.COM TOLL FREE: (800) 688-4620	<h1>14</h1>
--	--	---	-------------

Water Pipes & Water Necks

A-3068-F	EA-30/E-42 Upper Water Pipe
A-3069-F	EA-30/E-42 Lower Water Pipe
A-3840-T	DP-60 Upper Water Pipe
A-3841-T	DP-60 Lower Water Pipe
A-2910-A	DP-80 Upper Water Pipe
A-2911	DP-80 Lower Water Pipe
A-3550-KIT	E-42 Water Neck, 4-Bolt
A-3550-T	E-42 Water Neck, 4-Bolt with 2-Bolt Adapter
A-3550-TBA	Water Neck Adapter, 4-Bolt to 2-Bolt
A-3752	Water Neck Gasket

Spark Plugs & Spark Plug Wires

SPWA-12	12" Spark Plug Wire Assembly
SPWA-18	18" Spark Plug Wire Assembly
W18	Autolite Spark Plug for Ajax Engines
W18C	Champion Spark Plug for Ajax Engines

Fan Belts & Belt Guards

B-112	DP-60 Fan Belt, Requires Two
B-120	DP-80 Fan Belt, Requires Two
CX-81	EA-30 Fan Belt
CX-96	E-42 Fan Belt
A-3467-B	EA-30 Fan Belt Guard
A-3023-A	EA-30/E-42 Fan Guard
A-3067-A-C	E-42 Fan Belt Guard

GILLETTE LOCATION 100 N HIGHWAY 14-16 PO BOX 3200 GILLETTE, WY 82716 P: (307) 682-5262 F: (307) 682-2240	OKLAHOMA LOCATION 1021 NE 29 TH ST OKLAHOMA CITY, OK 73129 P: (405) 602-6927 F: (405) 602-6933	TIMCOSERVICE.COM INFO@TIMCOSERVICE.COM TOLL FREE: (800) 688-4620	15
--	--	--	-----------

Fans, Fan Repair Kits, and Fan Parts

TRK-164	EA-30/E-42 Fan Hub Repair Kit
YAE-2086-T	EA-30/E-42 Fan Hub Assembly, No Blades
YAE-2088-T	EA-30/E-42 Fan Assembly, Complete
YAE-6086-RPK	DP-60 Fan Hub Repair Kit
YAE-6086-T	DP-60 Fan Hub Assembly, No Blades
YAE-8086	DP-80 Fan Hub Assembly, No Blades
S11-908083-T	EA-30/E-42 Fan Blade, Steel
A-4080-T	E-42/DP-60 Fan Hub Plug
A-4081-T	DP-80 Fan Hub Plug
473228-T	E-42/DP-60 Fan Hub Seal

Oil Lines

A-3057-KIT	Side Cover Kit w/ Oil Trough, Oil Line, Gasket, and Fittings
OLK-30-CYLINDER	8" Stroke Engines, Cylinder to Lubricator Braided Oil Line Kit
OLK-30-GOV	8" Stroke Engines, Governor to Lubricator Braided Oil Line Kit
OLK-42-CYL	10" Stroke Engines, Cylinder to Lubricator Braided Oil Line Kit
OLK-42-GOV	10" Stroke Engines, Governor to Lubricator Braided Oil Line Kit
OLK-60-CYLINDER	12" Stroke Engines, Cylinder to Lubricator Braided Oil Line Kit
OLK-60-CYL	DP-60 Cylinder to Lubricator Steel Braided Oil Line Kit (3 Lines)
OLK-60-GOV	DP-60 Governor to Lubricator Steel Braided Oil Line Kit
AJAX DB OIL LINE	Drain Back Oil Line, Side Cover to Control Box
BM-10885	Cylinder Check Valve for 1/4" Copper Tubing
BM-10886	Cylinder Check Valve Extension for 1/4" Copper Tubing
BM-10885-T	Cylinder Check Valve for Steel Braided Oil Line
BM-10886-T	Cylinder Check Valve Extension for Steel Braided Oil Line

Starters & Repair Kits

YAE-1241-SD	E-42 Starter
-------------	--------------

GILLETTE LOCATION 100 N HIGHWAY 14-16 PO BOX 3200 GILLETTE, WY 82716 P: (307) 682-5262 F: (307) 682-2240	OKLAHOMA LOCATION 1021 NE 29 TH ST OKLAHOMA CITY, OK 73129 P: (405) 602-6927 F: (405) 602-6933	TIMCOSERVICE.COM INFO@TIMCOSERVICE.COM TOLL FREE: (800) 688-4620	16
--	--	---	-----------

YAE-1241-HD	E-42 Starter, Heavy Duty
YAE-6041-T	DP-60 Starter
TK-E42-SD	E-42 Starter Repair Kit, Standard Duty (Straight Spline)
TK-E42-HD	E-42 Starter Repair Kit, Heavy Duty (Spiral Spline)
TK-E42-HDG	E-42 Starter Repair Kit, Heavy Duty w/ Large Gear
TK-DP60-HDG	DP-60 Starter Repair Kit w/ Large Gear

Starter Parts

AA10491	DP-60 Starter Motor Bushing
AA1108	DP-60 Starter Motor Bushing
A-3250	E-42 Starter Housing
A-3251-A	Starter Cover
A-3252	Starter Engagement Yoke
A-3253	E-42 Starter Cross Shaft
A-3254-C	Starter Button Housing Cover
A-3255	E-42 Copper Conductor
A-3257	Starter Button Housing
A-3350	DP-60 Starter Housing
A-3351	DP-60 Small Starter Gear
A-3352-1	DP-60 Large Starter Gear
A-3353	DP-60 Starter Cross Shaft
A-3354	DP-60 Starter Spring Retainer
A-3355-A	DP-60 Starter Copper Conductor
A-3356	DP-60 Starter Shaft Bushing
A-3357	DP-60 Starter Shaft Bushing
A-3368	DP-60 Starter Stop Collar
A-3369	DP-60 Starter Snap Ring
A-3881-C	DP-60 Starter Shaft, 6 Spline
A-3881-T	DP-60 Starter Shaft, 19 Spline
A-3975-A	E-42 Starter Gear, Small
A-3976-HD	E-42 Starter Gear, Large
A-3978	E-42 Starter Shaft, Straight Spline
A-3978-HD	E-42 Starter Shaft, Spiral Spline
BM-10228-HD	E-42 Starter Motor
BM-10230-A	E-42 Starter Drive, Straight Spline
BM-10230-HD	E-42 Starter Drive, Spiral Spline

<u>GILLETTE LOCATION</u> 100 N HIGHWAY 14-16 PO BOX 3200 GILLETTE, WY 82716 P: (307) 682-5262 F: (307) 682-2240	<u>OKLAHOMA LOCATION</u> 1021 NE 29 TH ST OKLAHOMA CITY, OK 73129 P: (405) 602-6927 F: (405) 602-6933	<u>TIMCOSERVICE.COM</u> INFO@TIMCOSERVICE.COM TOLL FREE: (800) 688-4620	<h1>17</h1>
--	--	---	-------------

BM-10231	Receptacle Assembly
BM-10231-KIT	Receptacle Repair Kit
BM-10234-HD	E-42 Starter E-Clip
BM-10235-A	E-42 Starter Bushing
BM-10236-A	E-42 Starter Bushing
BM-10236-HD	E-42 Starter Bushing, Heavy Duty
BM-10245-A	Roll Pin for Starter
BM-10560	Starter Solenoid
BM-10561	Solenoid Plunger
BM-10565-A	Starter Push Button Switch
BM-10583	Plunger Return Spring
BM-10584	Starter Spring Retainer
BM-10721	DP-60 Starter Motor
BM-10743	DP-60 Starter E-clip
BM-10792	DP-60 Starter Woodruff Key
BM-10817	E-42 Starter Woodruff Key
BM-10817-HD	E-42 Starter Woodruff Key, Heavy Duty
OA-9109	E-42 Starter Retainer Ring, Heavy Duty
OA-9207	E-42 Starter Retainer, Heavy Duty
P8712	E-42 Starter Motor Bushing, Gear End
SPEC 7485	DP-60 Starter Drive, 19 Spline
WPI-027	Terminals for WPI-113
WPI-113	Cannon Plug
YAE-1247	Starter Button Assembly
YAE-1248	E-42 Starter Motor Cable, 10" (Old Style Motor)
YAE-1248-HD	E-42 Starter Motor Cable, 6-1/2" (New Style Mother

Jumper Cables (Custom length available upon request)

JC-20-AC	20' Jumper Cable Set w/ Clamps and Cannon Plug
----------	--

Overspeed Switch & Bolt Assemblies

T-38-TA	Over Speed Switch Support
YT-154-T	Lisle Ring Compressor, 3-1/2" - 7"
YT-154-RPK	Lisle Ring Compressor, 7" - 10"

<u>GILLETTE LOCATION</u> 100 N HIGHWAY 14-16 PO BOX 3200 GILLETTE, WY 82716 P: (307) 682-5262 F: (307) 682-2240	<u>OKLAHOMA LOCATION</u> 1021 NE 29 TH ST OKLAHOMA CITY, OK 73129 P: (405) 602-6927 F: (405) 602-6933	TIMCOSERVICE.COM INFO@TIMCOSERVICE.COM TOLL FREE: (800) 688-4620	<h1>18</h1>
--	--	--	-------------

YAE-1580-A-T	EA-30 Hammer Wrench
YAE-6080-T	E-42/DP-60 Hammer Wrench

Miscellaneous Ajax Parts

A-111-C	DP-80/160 Cylinder Head Stud
A-2549-A	Fuel Injection Plug Cover Plate
A-2572	Fuel Injection Plug
A-2693-F	DP-115 Mixer Valve
A-2829	DP-80 Mixer Valve
A-3014-A	E-42 Oil Slinger
A-3049	Layshaft Tube
A-3069	Lever
A-3094-A	Layshaft Cover Plate, Rectangular
A-3124-R	Layshaft Bushing
A-3128-1	Magneto Drive Gear
A-3220	E-42 Starter Ring Gear
A-3225-A	Tapered Key, Clutch Side
A-3420	EA-30 Starter Ring Gear
A-3438	Layshaft Cover Play, Diamond Shape, Two Bolt
A-4018-A	Coil Bracket, Two Bolt Water Neck Mount
BM-1406	Mag Drive/Lubricator Shaft Oil Seal
BM-1421	E-42 Crankshaft Oil Seal
BM-1434	EA-30 Crankshaft Oil Seal
BM-1757-A	Compression Release Valve
BM-10006-T	E-42 Main Bearing
BM-10111	Oil Filler Cap
BM-10465-O	Layshaft Seal, Lip Style
BM-10465-T	Layshaft Seal, Mechanical Style
BM-10745	Governor Weight Lift Pin
BM-10781	U-Cup Seal
BM-11466-0820	Magneto Drive Nylon Lock Nut
BM-11903-06	Magneto Drive Woodruff Key
FM601-66/96	Ignition system 66/96
FMAJAX-Stand	Arrow Stand
M-1471-D	E-42/DP-60 Mixer Valve
M-2548-A	Stud, Double Ended

<u>GILLETTE LOCATION</u> 100 N HIGHWAY 14-16 PO BOX 3200 GILLETTE, WY 82716 P: (307) 682-5262 F: (307) 682-2240	<u>OKLAHOMA LOCATION</u> 1021 NE 29 TH ST OKLAHOMA CITY, OK 73129 P: (405) 602-6927 F: (405) 602-6933	<u>TIMCOSERVICE.COM</u> INFO@TIMCOSERVICE.COM TOLL FREE: (800) 688-4620	<h1>19</h1>
--	--	---	-------------

NFS-6L	No Flow Switch
K-6375-A	Dowell Pin
M-1485	Mixer Valve Spring
M-1671-B-1	EA-30 Mixer Valve
M-1710-A-1	EA-30 Oil Slinger
M-2001-H	Hex Head Cap Screw
M-2421-T	Mag Drive Bushing
M-2548-A	Stud Double Ended
YAE-1222	Compression Release Valve

Hardware & Tools

21000	Lisle Ring Compressor, 3-1/2" - 7"
21500	Lisle Ring Compressor, 7" - 10"
2629SW	EA-30 Hammer Wrench
2638SW	E-42/DP-60 Hammer Wrench
3/4 HD	3/4" Cylinder Head Stud
7/8 HD	7/8" Cylinder Head Stud
A-336	DP-60 Double End Stud
A-2853-E	DP-60 Cylinder Head Stud
A-3790	E-42 Cylinder Head Stud
BM-11910-0813	EA-30/E-42 Piston Rod Jam Nut
BM-11916-1216	E-42 Connecting Rod Nut
BM-11921-0813-06	EA-30/E-42 Piston Lock Bolt
BM-11921-14-DP	Crosshead Lock Bolt, 5/8 x 1-3/4"
M-1019-A	E-42/DP-60 Piston Rod Nut
M-1619	EA-30 Piston Rod Nut
T-181	Flywheel Wedge
T-633-B	Piston Thimble, 7-1/4 x 8
T-634-D	Piston Thimble, 8-1/2 x 10 & DP-60

Mag Drive Assembly & Repair Kit

YAE-1561-KIT	Mag Drive Repair Kit
YAE-1561-T	Mag Drive Assembly
YAE-1561-S-C	Mag Drive Coupling Shaft

<u>GILLETTE LOCATION</u> 100 N HIGHWAY 14-16 PO BOX 3200 GILLETTE, WY 82716 P: (307) 682-5262 F: (307) 682-2240	<u>OKLAHOMA LOCATION</u> 1021 NE 29 TH ST OKLAHOMA CITY, OK 73129 P: (405) 602-6927 F: (405) 602-6933	<u>TIMCOSERVICE.COM</u> INFO@TIMCOSERVICE.COM TOLL FREE: (800) 688-4620	<h1>20</h1>
--	--	---	-------------

Gasoline Flywheel Starter

HS6	Happy Starter Friction Wheel, 6 x 3 x 1.5
HS6-1	Happy Starter Friction Wheel, 6 x 3 x 1
HS6-2	Happy Starter Friction Wheel, 6 x 3 x 2

Pilot Bearing Housings, Bearing, and Kits

M2467T	72mm Pilot Bearing, 2 Piece
M2529T	80mm Pilot Bearing, 2 Piece
M2713	100mm Pilot Bearing, 2 Piece
A-3424-T	EA-22/EA-30, Pilot Bearing Housing
A-3424-T-KIT	EA-22/EA-30, Pilot Bearing Housing w/ Bearing Installed
A-3224-T	EA-42/EA-60, Pilot Bearing Housing
A-3224-T-KIT	EA-42/EA-60, Pilot Bearing Housing w/ Bearing Installed
A-2843-A	DP-80 Pilot Bearing Housing
A-2843-A-KIT	DP-80, Pilot Bearing Housing w/ Bearing Installed

Mufflers

SURS-4	Critical Grade Muffler, 4" Flange
SURS-6	Critical Grade Muffler, 6" Flange
SURS-10	Critical Grade Muffler, 10" Flange
URB-4	Industrial Grade Muffler, 4" Flange
URB-6	Industrial Grade Muffler, 6" Flange
URB-6-4-KIT	4" to 6" Flange Adapter Kit
A-3026-T	4" Exhaust Flange
BM-19030-H-13	6" Exhaust Flange

GILLETTE LOCATION 100 N HIGHWAY 14-16 PO BOX 3200 GILLETTE, WY 82716 P: (307) 682-5262 F: (307) 682-2240	OKLAHOMA LOCATION 1021 NE 29 TH ST OKLAHOMA CITY, OK 73129 P: (405) 602-6927 F: (405) 602-6933	TIMCOSERVICE.COM INFO@TIMCOSERVICE.COM TOLL FREE: (800) 688-4620	21
--	--	---	-----------

Clutch Assemblies *(Includes Drive Ring, Handle, and Pilot Bearing)*

C108HP4	5-1/2 x 6 WL, Clutch Assembly
SP111HP2	6-1/2 x 8 CMA, EA-22, 7-1/4 x 8 CMA Clutch Assembly
SP211HP2	EA-30 Clutch Assembly
SP114HP1	7-1/2 x 10 CMA, 8-1/2 x 10 CMA, E-30, E-42 Clutch Assembly
SP214HP0	DP-60 Clutch Assembly
SP314HP0	DP-80 Clutch Assembly

<p><u>GILLETTE LOCATION</u> 100 N HIGHWAY 14-16 PO BOX 3200 GILLETTE, WY 82716 P: (307) 682-5262 F: (307) 682-2240</p>	<p><u>OKLAHOMA LOCATION</u> 1021 NE 29TH ST OKLAHOMA CITY, OK 73129 P: (405) 602-6927 F: (405) 602-6933</p>	<p><u>TIMCOSERVICE.COM</u> INFO@TIMCOSERVICE.COM TOLL FREE: (800) 688-4620</p>	<h2>22</h2>
---	--	--	-------------

7-1/4 x 8 CMA, EA-30 Overhaul List

ASJAX

Qty	Part Number	Description
12"	200R	Radiator Hose
1	20T-250	Temperature Gauge
1	30050032	Gauge Panel
1	507-K	Oil Level Controller
1	6625D	Drive Ring (111)
1	6931T	Drive Ring (211)
1	7003-1G	Lubricator Box
1	91200-G	Lubricator Pump
1	A-3068-F	Upper Water Pipe
1	A-3069-F	Lower Water Pipe
1	A-3420	Starter Ring Gear
1	A-3524	Wrist Pin
1	A-3556-B	Rod Bearing
6	A-3952	Cylinder Head Stud
1-2	A-5579	Clutch Plate (1 piece)
1	BM-10011-NEW	Radiator
1	BM-10111	Oil Filler Cap
1	BM-10465-T	Layshaft Seal, Mechanical
1	BM-10465-O	Layshaft Seal, Lip
1	BM-10560	Solenoid
2	BM-10879	Throttle Rod End
1	BM-1334-J-1	Rod Packing
1	BM-1406	Lubricator Oil Seal
1	BM-1434	Crankshaft Seal
1	BM-1757-A	Compression Relief Valve
1	CX-81	Fan Belt
1	G1-Y-1	Altronic Kit
1	L-129	Oil Level Switch
2	LO70 Coupling	Lovejoy Coupling
1	LO70 Spider	Lovejoy Spider
5	M-1471-D	Mixer Valve
10	M-1485	Mixer Spring
1	M-1636-BR	Wrist Pin Bushing
2	M-1639-B	Laminated Shim
2	M-1639-B-1	Solid Shim
1	M-1710	Oil Slinger

Qty	Part Number	Description
2	M207	Main Bearing
8	M2115C	Spring Washer
2	M2196	Main Bearing
2	M2241	Cam Roll
1	M2467T	Pilot Bearing, 2 Piece
1	OLK-30-CYL	Oil Line Kit
1	OLK-30-GOV	Oil Line Kit
1	SP111HP2	Clutch
1	SP211HP2	Clutch
1	TAC-250-KIT	Dry Air Cleaner (CMA)
1	TAC-300-KIT	Dry Air Cleaner (EA-30)
1	TGS-6790-B	Overhaul Gasket Set
1	TK-2230	Carburetor Kit
1	TK-CMA-8-AH	Carburetor Kit
1	TK-42-HD	HD Starter Kit
1	TRK-161	Old Style Governor Repair Kit
1	TRK-162	New Style Governor Repair Kit
1	TRK-164	Fan Repair Kit
1	TRS-104	EA-30 Ring Set
1	TRS-106	CMA Ring Set
1	W18	Spark Plug
1	X117	Brass Collar (111)
1	X117C10	Brass Collar (211)
1	YAE-1561-KIT	Mag Drive Kit
1	YT-154-RPK	Overspeed Repair Kit
1	YT-154-T	Overspeed Switch

GILLETTE LOCATION 100 N HIGHWAY 14-16 PO BOX 3200 GILLETTE, WY 82716 P: (307) 682-5262 F: (307) 682-2240	OKLAHOMA LOCATION 1021 NE 29 TH ST OKLAHOMA CITY, OK 73129 P: (405) 602-6927 F: (405) 602-6933	TIMCOSERVICE.COM INFO@TIMCOSERVICE.COM TOLL FREE: (800) 688-4620	23
--	--	--	-----------

7-1/2 x 10 CMA, E-30 Overhaul List

AJSAX

Qty	Part Number	Description
12"	200R	Radiator Hose
1	20T-250	Temperature Gauge
1	30050032	Gauge Panel
1	507-K	Oil Level Controller
1	5659-K	Clutch Plate (1 piece)
1	5712B	Drive Ring (114)
1	7003-1G	Lubricator Box
1	91200-G	Lubricator Pump
1	A-3014-A	Oil Slinger
1	A-3056-C	Con Rod Bearing
2	A-3058-A	Laminated Shim
2	A-3058-A-1	Solid Shim
1	A-3068-F	Upper Water Pipe
1	A-3069-F	Lower Water Pipe
1	A-3220	Starter Ring Gear
1	A-3224-T-KIT	Pilot Bearing Housing
8	A-3790	Head Stud
2	BM-10006-T	Crank Main Bearing
1	BM-10011-NEW	Radiator
1	BM-10111	Oil Filler Cap
1	BM-10465-T	Layshaft Seal, Mech
1	BM-10465-O	Layshaft Seal, Lip
1	BM-10560	Solenoid
2	BM-10879	Throttle Rod End
1	BM-1333-K-1	Rod Packing
1	BM-1406	Lubricator Oil Seal
1	BM-1434	Crankshaft Seal
1	BM-1757-A	Compression Relief Seal
1	CX-96	Fan Belt
1	G1-X-1	Altronic Kit
1	L-129	Oil Level Switch
2	LO70 Coupling	Lovejoy Coupling
1	LO70 Spider	Lovejoy Spider
1	M-1422-T	Wrist Pin
1	M-1436-C-1-R	Wrist Pin Bushing
5	M-1471-D	Mixer Valve

Qty	Part Number	Description
10	M-1485	Mixer Spring
1	M-1550-F	Head Gasket
8	M2115D	Clutch Spring Washers
2	M2241	Cam Roll
1	M2529T	Pilot Bearing, 2 Piece
2	M282	Clutch Main Bearing
1	OLK-42-CYL	Oil Line Kit
1	OLK-42-GOV	Oil Line Kit
1	SP114HP1	Clutch
1	TAC-250-KIT	Dry Air Cleaner (CMA)
1	TAC-300-KIT	Dry Air Cleaner (E-30)
1	TK-42	Carburetor Kit
1	TK-CMA-10-AH	Carburetor Kit
1	TK-E42-HD	HD Starter Kit
1	TRK-161	Old Style Governor Repair Kit
1	TRK-162	New Style Governor Repair Kit
1	TRK-164	Fan Repair Kit
1	TRS-108	CMA Ring Set
1	TRS-110	E-30 Ring Set
1	W18	Spark Plug
1	X117B14	Brass Collar
1	YAE-1561-KIT	Mag Drive Kit
1	YT-154-RPK	Overspeed Repair Kit
1	YT-154-T	Overspeed Switch

GILLETTE LOCATION 100 N HIGHWAY 14-16 PO BOX 3200 GILLETTE, WY 82716 P: (307) 682-5262 F: (307) 682-2240	OKLAHOMA LOCATION 1021 NE 29 TH ST OKLAHOMA CITY, OK 73129 P: (405) 602-6927 F: (405) 602-6933	TIMCOSERVICE.COM INFO@TIMCOSERVICE.COM TOLL FREE: (800) 688-4620	24
--	--	---	-----------

8-1/2 x 10 CMA, E-42 Overhaul List

AJSAX

Qty	Part Number	Description
12"	200R	Radiator Hose
1	20T-250	Temperature Gauge
1	30050032	Gauge Panel
1	507-K	Oil Level Controller
1	5659-K	Clutch Plate, 1 Piece
1	5712B	Drive Ring (114)
1	7003-1G	Lubricator Box
1-2	91200-G	Lubricator Pump
1	A-3014-A	Oil Slinger
1	A-3056-C	Con Rod Bearing
2	A-3058-A	Laminated Shim
2	A-3058-A-1	Solid Shim
1	A-3068-F	Upper Water Pipe
1	A-3069-F	Lower Water Pipe
1	A-3204-F	Head Gasket
1	A-3220	Starter Ring Gear
1	A-3224-T-KIT	Pilot Bearing Housing
8	A-3790	Head Stud
2	BM-10006-T	Crank Main Bearing
1	BM-10011-NEW	Radiator
1	BM-10111	Oil Filler Cap
1	BM-10465-T	Layshaft Seal, Mech
1	BM-10465-O	Layshaft Seal, Lip
1	BM-10560	Solenoid
2	BM-10879	Throttle Rod End
1	BM-1333-K-1	Rod Packing
1	BM-1406	Lubricator Oil Seal
1	BM-1434	Crankshaft Seal
1	BM-1757-A	Compression Relief Seal
1	CX-96	Fan Belt
1	G1-X-1	Altronic Kit
1	L-129	Oil Level Switch
2	LO70 Coupling	Lovejoy Coupling
1	LO70 Spider	Lovejoy Spider
1	M-1422-T	Wrist Pin
1	M-1436-C-1-R	Wrist Pin Bushing
5-6	M-1471-D	Mixer Valve

Qty	Part Number	Description
10-12	M-1485	Mixer Spring
8	M2115D	Spring Washers
2	M2241	Cam Roll
1	M2529T	Pilot Bearing
2	M282	Main Bearing
1	OLK-42-CYL	Oil Line Kit
1	OLK-42-GOV	Oil Line Kit
1	SP114HP1	Clutch
1	TAC-250-KIT	Dry Air Cleaner (CMA)
1	TAC-300-KIT	Dry Air Cleaner (E-42)
1	TGS-6790-B	Overhaul Gasket Set
1	TK-42	Carburetor Kit
1	TK-CMA-10-AH	Carburetor Kit
1	TK-E42-HD	HD Starter Kit
1	TRK-161	Old Style Governor Repair Kit
1	TRK-162	New Style Governor Repair Kit
1	TRK-164	Fan Repair Kit
1	TRS-112	CMA Ring Set
1	TRS-114	E-42 Ring Set
1	W18	Spark Plug
1	X117B14	Brass Collar
1	YAE-1561-KIT	Mag Drive Kit
1	YAE-1580-A-T	Overspeed Bolt
1	YAE-6080-T	Overspeed Bolt (CMA)
1	YT-154-RPK	Overspeed Repair Kit
1	YT-154-T	Overspeed Switch

GILLETTE LOCATION 100 N HIGHWAY 14-16 PO BOX 3200 GILLETTE, WY 82716 P: (307) 682-5262 F: (307) 682-2240	OKLAHOMA LOCATION 1021 NE 29 TH ST OKLAHOMA CITY, OK 73129 P: (405) 602-6927 F: (405) 602-6933	TIMCOSERVICE.COM INFO@TIMCOSERVICE.COM TOLL FREE: (800) 688-4620	25
--	--	---	-----------

DP-60 Overhaul List

AJSAX

Qty	Part Number	Description
12"	275R	Radiator Hose
1	20T-250	Temperature Gauge
1	30050032	Gauge Panel
1	507-K	Oil Level Controller
2	5659-K	Clutch Plate, 1 Piece
1	5713D	Drive Ring (214)
1	7003-1G	Lubricator Box
3	91200-G	Lubricator Pump
8	A-2853-E	Head Stud
1	A-3224-T-KIT	Pilot Bearing Housing
1	A-3808	Wrist Pin
1	A-3810	Con Rod Bearing
2	A-3826-A	Laminated Shim
2	A-3826-A-1	Solid Shim
1	A-3836-1-R	Wrist Pin Bushing
1	A-3840-B	Upper Water Pipe
1	A-3841-B	Lower Water Pipe
2	B-112	Fan Belt
1	BM-10111	Oil Filler Cap
1	BM-10465-T	Layshaft Seal, Mech
1	BM-10465-O	Layshaft Seal, Lip
1	BM-10473	Gas Valve Bearing
1	BM-10474	Gas Valve Bearing
1	BM-10560	Solenoid
1	BM-10725-NEW	Radiator
4	BM-10737	Radiator Mount
2	BM-10879	Throttle Rod End
1	BM-1333-K-1	Rod Packing
1	BM-1406	Lubricator Oil Seal
1	G1-X-1	Altronic Kit
1	L-129	Oil Level Switch
2	LO70 Coupling	Lovejoy Coupling
1	LO70 Spider	Lovejoy Spider
6	M-1471-D	Mixer Valve
12	M-1485	Mixer Spring
8	M2115D	Clutch Spring Washers

Qty	Part Number	Description
2	M215	Clutch Main Bearing
2	M2241	Cam Roll
1	M2529T	Pilot Bearing, 2 Piece
1	OLK-60-CYL	Oil Line Kit
1	OLK-60-GOV	Oil Line Kit
1	SP214HP0	Clutch Main Bearing
1	TAC-300-KIT	Dry Air Cleaner
1	TGS-7043-A	Overhaul Gasket Set
1	TK-60	Carburetor Kit
1	TRK-161	Old Style Governor Kit
1	TRK-162	New Style Governor Kit
1	TRS-116	Piston Ring Set
1	W18	Spark Plug
1	X117B14	Brass Collar
1	YAE-1561-KIT	Mag Drive Kit
1	YAE-6086-T	Overspeed Switch
1	YAE-6086-RPK	Fan Repair Kit
1	YAE-154-RPK	Overspeed Repair Kit
1	YT-154-T	Overspeed Switch

<u>GILLETTE LOCATION</u> 100 N HIGHWAY 14-16 PO BOX 3200 GILLETTE, WY 82716 P: (307) 682-5262 F: (307) 682-2240	<u>OKLAHOMA LOCATION</u> 1021 NE 29 TH ST OKLAHOMA CITY, OK 73129 P: (405) 602-6927 F: (405) 602-6933	<u>TIMCOSERVICE.COM</u> INFO@TIMCOSERVICE.COM TOLL FREE: (800) 688-4620	<h1>26</h1>
--	--	---	-------------

DP-80 Overhaul List

ASJAX

Qty	Part Number	Description
12"	275R	Radiator Hose
1	20T-250	Temperature Gauge
1	30050032	Gauge Panel
1	507-K	Oil Level Controller
3	5659-K	Clutch Plate, 1 pc.
1	7003-1G	Lubricator Box
3	91200-G	Lubricator Pump
8	A-111-A	Head Stud
1	A-1608	Wrist Pin
1	A-1656-E	Con Rod Bearing
2	A-1659-F	Laminated Shim
2	A-1659-F-1	Solid Shim
1	A-1678-1	Wrist Pin Bushing
7	A-2829	Mixer Valve
1	A-2843-A-KIT	Pilot Bearing Housing
1	A6518A	Drive Ring (314)
2	B-120	Fan Belt
1	BM-10111	Oil Filler Cap
1	BM-1330-E-1	Rod Packing
1	BM-10465-T	Layshaft Seal, Mech
1	BM-10465-O	Layshaft Seal, Lip
1	BM-10473	Gas Valve Bearing
1	BM-10474	Gas Valve Bearing
1	BM-10560	Solenoid
2	BM-10879	Throttle Rod End
1	BM-1406	Lubricator Oil Seal
1	G1-X-1	Altronic Kit
1	L-129	Oil Level Switch
2	LO70 Coupling	Lovejoy Coupling
1	LO70 Spider	Lovejoy Spider
12	M-1485	Mixer Spring
8	M2115D	Clutch Spring Washers
2	M215	Clutch Main Bearing
2	M2241	Cam Roll
1	M2713T	Pilot Bearing, 2 Piece

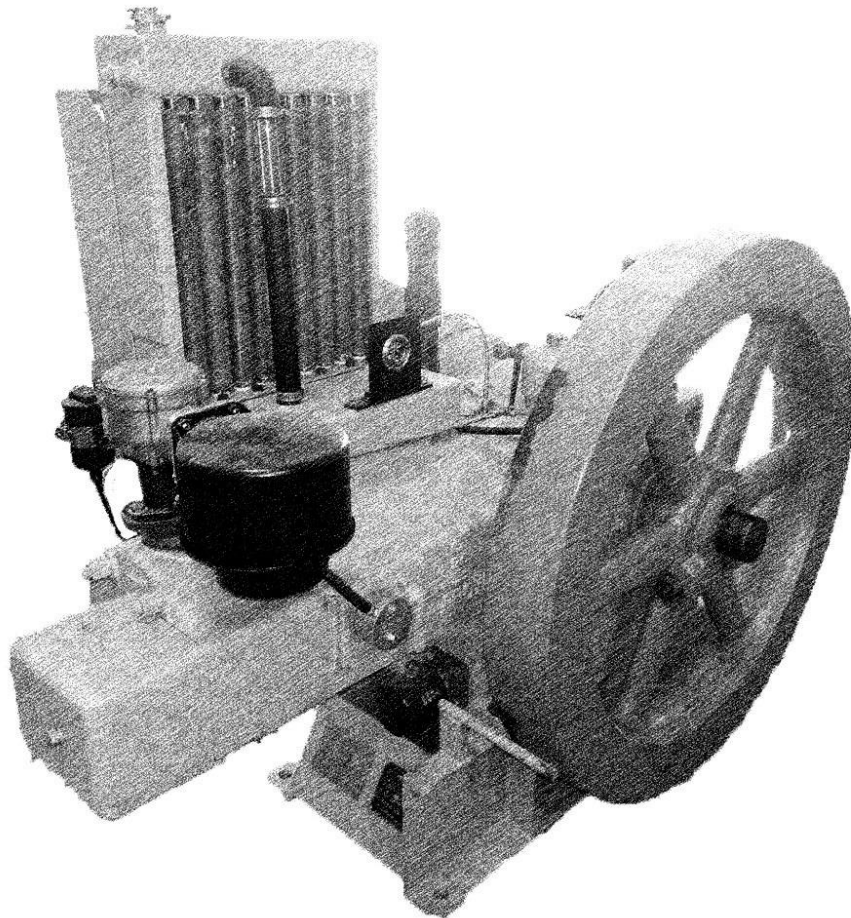
Qty	Part Number	Description
1	OLK-60-CYL	Oil Line Kit
1	OLK-60-GOV	Oil Line Kit
1	SP314HP0	Clutch
1	TGS-6979-C	Overhaul Gasket Set
1	TK-70-230	Carburetor Kit
1	TRK-161	Old Style Governor Kit
1	TRK-162	New Style Governor Kit
1	TRS-120	Piston Ring Set
2	W18	Spark Plug
1	X117B14	Brass Collar
1	YAE-1561-KIT	Mag Drive Kit
1	YT-154-T	Overspeed Switch

<u>GILLETTE LOCATION</u> 100 N HIGHWAY 14-16 PO BOX 3200 GILLETTE, WY 82716 P: (307) 682-5262 F: (307) 682-2240	<u>OKLAHOMA LOCATION</u> 1021 NE 29 TH ST OKLAHOMA CITY, OK 73129 P: (405) 602-6927 F: (405) 602-6933	<u>TIMCOSERVICE.COM</u> INFO@TIMCOSERVICE.COM TOLL FREE: (800) 688-4620	<h1>27</h1>
--	--	---	-------------



Arrow Engine

Model C-46 through C-106



Carburetor Kits

TK-46	C-46 Carburetor Kit, 110 Carburetor & Air Horn
TK-46-100	C-46 Carburetor Kit, 100 Carburetor & Air Horn
TK-66	C-66 Carburetor Kit, 110 Carburetor & Air Horn
TK-66-100	C-66 Carburetor Kit, 100 Carburetor & Air Horn
TK-96	C-96 Carburetor Kit, 210 Carburetor & Air Horn
TK-96-200	C-96 Carburetor Kit, 200 Carburetor & Air Horn
TK-106	C-106 Carburetor Kit, 210 Carburetor
TK-106-200	C-106 Carburetor Kit, 200 Carburetor
TK-106-AH	C-106 Carburetor Kit, 210 Carburetor & Air Horn
TK-106-200-AH	C-106 Carburetor Kit, 200 Carburetor & Air Horn

Carburetor Related Parts

CA-46	TK-46 Crossover Adapter
CA-66	TK-66 Crossover Adapter
CA-96	TK-96 Crossover Adapter
AH-2312	Air Horn Adapter, 2-5/16" Bore
AH-2625	Air Horn Adapter, 2-5/8" Bore
S-110-E	C-106 Air Cleaner, Oil Bath
TAC-200-KIT	C-46/C-66 Air Cleaner, Dry Element
TAC-250-KIT	C-96/C-106 Air Cleaner, Dry Element

Head Gaskets

238-46	C-46 Head Gasket
238-46-GHD	C-46 Head Gasket, Heavy Duty Grafoil
238-66	C-66 Head Gasket
238-66-GHD	C-66 Head Gasket, Heavy Duty Grafoil
238-96	C-96 Head Gasket
238-96-GHD	C-96 Head Gasket, Heavy Duty Grafoil
238-106	C-106 Head Gasket
238-106-GHD	C-106 Head Gasket, Heavy Duty Grafoil

GILLETTE LOCATION 100 N HIGHWAY 14-16 PO BOX 3200 GILLETTE, WY 82716 P: (307) 682-5262 F: (307) 682-2240	OKLAHOMA LOCATION 1021 NE 29 TH ST OKLAHOMA CITY, OK 73129 P: (405) 602-6927 F: (405) 602-6933	TIMCOSERVICE.COM INFO@TIMCOSERVICE.COM TOLL FREE: (800) 688-4620	29
--	--	---	-----------

Gasket Sets

TGS-46	C-46 Overhaul Gasket Set
TGS-46-HD	C-46 Overhaul Gasket Set, Heavy Duty
TGS-66	C-66 Overhaul Gasket Set
TGS-66-HD	C-66 Overhaul Gasket Set, Heavy Duty
TGS-96	C-96 Overhaul Gasket Set
TGS-96-HD	C-96 Overhaul Gasket Set, Heavy Duty
TGS-106	C-106 Overhaul Gasket Set
TGS-106-HD	C-106 Overhaul Gasket Set, Heavy Duty
TVGS-46	C-46 Valve Grind Gasket Set
TVGS-46-HD	C-46 Valve Grind Gasket Set, Heavy Duty
TVGS-66	C-66 Valve Grind Gasket Set
TVGS-66-HD	C-66 Valve Grind Gasket Set, Heavy Duty
TVGS-96	C-96 Valve Grind Gasket Set
TVGS-96-HD	C-96 Valve Grind Gasket Set, Heavy Duty
TVGS-106	C-106 Valve Grind Gasket Set
TVGS-106-HD	C-106 Valve Grind Gasket Set, Heavy Duty

Miscellaneous Gaskets

173-46	C-46/66/96/106 Screen Cover Gasket
208-46	C-46/66/96 Governor Housing Gasket
208-106	C-106 Governor Housing Gasket
215-46	C-46/66/96/106 Governor Gasket
22-46	C-46/66 Rear Inspection Cover Gasket
22-96	C-96/106 Rear Inspection Cover Gasket
24-46	C-46 Top Crankcase Cover Gasket
24-66	C-66 Top Crankcase Cover Gasket
24-96	C-96/106 Top Crankcase Cover Gasket
289-46	C-46/66/96/106 Fuel Pump Cover Gasket
314-46	C-46/66/96/106 Water Filler Gasket
32-46	C-46/66 Compression Relief Cover Gasket
32-96	C-96/106 Compression Relief Cover Gasket
330-11-46	C-46/66/96/106 Magneto Bracket Gasket
330-17-46	C-46/66/96/106 Magneto Drive Gasket

GILLETTE LOCATION 100 N HIGHWAY 14-16 PO BOX 3200 GILLETTE, WY 82716 P: (307) 682-5262 F: (307) 682-2240	OKLAHOMA LOCATION 1021 NE 29 TH ST OKLAHOMA CITY, OK 73129 P: (405) 602-6927 F: (405) 602-6933	TIMCOSERVICE.COM INFO@TIMCOSERVICE.COM TOLL FREE: (800) 688-4620	30
--	--	---	-----------

346-46	C-46/66/96/106 Gasket, Water Filler
35-46	C-46 Oil Level Gauge Gasket
498-T-1	C-46/66/96/106 Side Gasket
498-T-2	Fan Hub Gasket Large ID
8-46	Fan Hub Gasket Small ID
ACE-409-46NS	C-46/66/96/106 Gasket-Sediment Bowl

Piston Assemblies

76-T-46	C-46 Piston w/ rings, wrist pin, and bushings
76-T-66	C-66 Piston w/ rings, wrist pin, and bushings
76-T-96	C-96 Piston w/ rings, wrist pin, and bushings
76-T-106	C-106 Piston w/ rings, wrist pin, and bushings

Piston Ring Sets

TRS-46	C-46 Piston Ring Set
TRS-66	C-66 Piston Ring Set
TRS-96	C-96 Piston Ring Set
TRS-106-ARW	C-106 Piston Ring Set

Wrist Pin & Bushing

78-T-46	C-46 Wrist Pin Bushing
78-T-46-003	C-46 Wrist Pin Bushing .003 oversize
78-T-66	C-66 Wrist Pin Bushing
78-T-66-003	C-66 Wrist Pin Bushing .003 oversize
78-T-66-005	C-66 Wrist Pin Bushing .005 oversize
78-T-96	C-96 Wrist Pin Bushing
78-T-96-003	C-96 Wrist Pin Bushing .003 oversize
78-T-96-005	C-96 Wrist Pin Bushing .005 oversize
78-T-96-010	C-96 Wrist Pin Bushing .010 oversize
79-T-46	C-46 Wrist Pin
79-T-66	C-66 Wrist Pin
79-T-96	C-96 Wrist Pin
79-T-106	C-106 Wrist Pin

GILLETTE LOCATION 100 N HIGHWAY 14-16 PO BOX 3200 GILLETTE, WY 82716 P: (307) 682-5262 F: (307) 682-2240	OKLAHOMA LOCATION 1021 NE 29 TH ST OKLAHOMA CITY, OK 73129 P: (405) 602-6927 F: (405) 602-6933	TIMCOSERVICE.COM INFO@TIMCOSERVICE.COM TOLL FREE: (800) 688-4620	<h1>31</h1>
--	--	---	-------------

Connecting Rod Bearing & Shims

83-46	C-46 Connecting Rod Bearing
83-66	C-66 Connecting Rod Bearing
83-96	C-96 Connecting Rod Bearing
88-66	C-66 Connecting Rod Bearing, Shim
88-96	C-96 Connecting Rod Bearing, Shim

Cylinder Sleeves & Gaskets

TCS-46	C-46 Cylinder Sleeve, Complete
TCS-66	C-66 Cylinder Sleeve, Complete
TCS-96	C-96 Cylinder Sleeve, Complete
TCS-106	C-106 Cylinder Sleeve, Complete
12-T-46	C-46 Cylinder Sleeve O-Ring Set
12-T-66	C-66 Cylinder Sleeve O-Ring Set
12-T-96	C-96 Cylinder Sleeve O-Ring Set
12-T-106	C-106 Cylinder Sleeve O-Ring Set

Cylinder Heads & Cylinder Head Repair Kits

222-46-T	C-46 Cylinder Head, Complete
222-66-T	C-66 Cylinder Head, Complete
222-96-T	C-96 Cylinder Head, Complete
222-106-T	C-106 Cylinder Head, Complete
222-TRK-46	C-46 Cylinder Head Repair Kit
222-TRK-66	C-66 Cylinder Head Repair Kit
222-TRK-96	C-96 Cylinder Head Repair Kit
222-TRK-106	C-106 Cylinder Head Repair Kit

GILLETTE LOCATION 100 N HIGHWAY 14-16 PO BOX 3200 GILLETTE, WY 82716 P: (307) 682-5262 F: (307) 682-2240	OKLAHOMA LOCATION 1021 NE 29 TH ST OKLAHOMA CITY, OK 73129 P: (405) 602-6927 F: (405) 602-6933	TIMCOSERVICE.COM INFO@TIMCOSERVICE.COM TOLL FREE: (800) 688-4620	32
--	--	---	-----------

Governor Repair Kit & Accessories

176-TRK-46	C-46/C-66/C-96 Governor Repair Kit
207-46	C-46 Governor Spring, Red
207-66	C-66 Governor Spring, White
207-96	C-96 Governor Spring, Blue
207-106	C-106 Governor Spring

Rocker Arm Parts

247-T-66	C-66 Rocker Arm Assy
247-T-96	C-96 Rocker Arm Assy
247-TRK-66	Rocker Arm Repair Kit
248-66	Rocker Arm Bracket
248-96	Rocker Arm Bracket
249-66	Rocker Arm Shaft
249-96	Rocker Arm Shaft
253-66	C-66 Rocker Arm Assembly
253-96	C-96/106 Rocker Arm Assembly

Valves & Valve Covers

T231-46	C-46 Intake/Exhaust Valve
T231-66	C-66 Intake/Exhaust Valve
T231-96	C-96 Intake/Exhaust Valve
T231-106	C-106 Intake/Exhaust Valve
241-T-66	C-66 Valve Cover
241-T-96	C-96 Valve Cover

GILLETTE LOCATION 100 N HIGHWAY 14-16 PO BOX 3200 GILLETTE, WY 82716 P: (307) 682-5262 F: (307) 682-2240	OKLAHOMA LOCATION 1021 NE 29 TH ST OKLAHOMA CITY, OK 73129 P: (405) 602-6927 F: (405) 602-6933	TIMCOSERVICE.COM INFO@TIMCOSERVICE.COM TOLL FREE: (800) 688-4620	33
--	--	---	-----------

Valve Guides

224-46	C-46 Valve Guide, Standard
224-46-003	C-46 Valve Guide, .003 Oversize
224-46-005	C-46 Valve Guide, .005 Oversize
224-46-010	C-46 Valve Guide, .010 Oversize
224-46-040	C-46 Valve Guide, .040 Oversize
224-66	C-66 Valve Guide, Standard
224-66-003	C-66 Valve Guide, .003 Oversize
224-66-005	C-66 Valve Guide, .005 Oversize
224-66-010	C-66 Valve Guide, .010 Oversize
224-66-040	C-66 Valve Guide, .040 Oversize
224-106	C-106 Valve Guide, Standard

Valve Seats

228-A-46	C-46 Valve Seat
228-A-66	C-66 Valve Seat
228-A-66-003	C-66 Valve Seat, .003 Oversize
228-A-66-005	C-66 Valve Seat, .005 Oversize
228-A-66-030	C-66 Valve Seat, .030 Oversize
228-A-96	C-96 Valve Seat
228-A-96-003	C-96 Valve Seat, .003 Oversize
228-A-96-005	C-96 Valve Seat, .005 Oversize
228-A-106	C-106 Valve Seat
228-A-106-005	C-106 Valve Seat, .005 Oversize

Spark Plug Wire Assemblies

330-20-96-T	C-96 Spark Plug Wire
330-20-AB-96-T	C-96 Spark Plug Wire, American Bosch Style

GILLETTE LOCATION 100 N HIGHWAY 14-16 PO BOX 3200 GILLETTE, WY 82716 P: (307) 682-5262 F: (307) 682-2240	OKLAHOMA LOCATION 1021 NE 29 TH ST OKLAHOMA CITY, OK 73129 P: (405) 602-6927 F: (405) 602-6933	TIMCOSERVICE.COM INFO@TIMCOSERVICE.COM TOLL FREE: (800) 688-4620	<h1>34</h1>
--	--	---	-------------

Oil Pumps and Oil Pump Repair Kits

124-T-46	C-46/C-66 Oil Pump
124-T-96	C-96/C-106 Oil Pump
124-TRK-46	C-46/C-66 Oil Pump Kit, Old Style
124-TRK-46-003	C-46/C-66 Oil Pump Kit, Old Style, .003 Oversize Shaft
124-TRK-96	C-96/C-106 Oil Pump Kit, Old Style
124-TRK-96-003	C-96/C-106 Oil Pump Kit, Old Style, .003 Oversize Shaft

Oil Filter Kit

OFK-1-T-KIT	Oil Filter Kit
-------------	----------------

Oil Line Kits

OLK-T-66-1	C-66 Basic Oil Line Kit, w/ Fittings
OLK-T-66-2	C-66 Full Oil Line Kit, w/ Fittings
OLK-T-96-1	C-96 Basic Oil Line Kit, w/ Fittings
OLK-T-96-2	C-96 Full Oil Line Kit, w/ Fittings

Oil Lines & Fittings

OL-16	Governor Tee to Oil Gauge (12.25")
OL-19	Cam Assembly Tee to oil Collector (17")
OL-26	Oil Pump Tee to Bulkhead (11")
OL-29	Oil Pump to Bulkhead (16")
OL-36	Oil Canister to Bulkhead (18")
OL-46	Oil Canister to Bulkhead (11")
OL-A-66	Crankcase Tee to Oil Collector (10.25")
OL-A-96	Crankcase Tee to oil Collect (10.5")
OL-B-66	Rocker Oil Adapter to Cam Assembly Tee (15")
OL-B-96	Rocker Oil Adapter to Cam Assembly Tee (18.5")
OL-C-66	Governor Tee to Crankcase (15")

GILLETTE LOCATION 100 N HIGHWAY 14-16 PO BOX 3200 GILLETTE, WY 82716 P: (307) 682-5262 F: (307) 682-2240	OKLAHOMA LOCATION 1021 NE 29 TH ST OKLAHOMA CITY, OK 73129 P: (405) 602-6927 F: (405) 602-6933	TIMCOSERVICE.COM INFO@TIMCOSERVICE.COM TOLL FREE: (800) 688-4620	35
--	--	---	-----------

OL-C-96	Governor Tee to Crankcase (15.5")
OL-D-66	Governor Tee to Oil Gauge (16")
OL-D-96	Governor Tee to Oil Gauge (20.5")
OL-E-66	Water Filler to Water Gauge (18")
OL-E-96	Water Filler to Water Gauge (20.5")
OL-F-66	Oil Pump to Bulkhead (15")
OL-F-96	Oil Pump Tee to Bulkhead (11.75")
OL-G-96	Oil Canister to Bulkhead (17.5")
OL-H-96	Oil Canister to Bulkhead (9.5")
OL-I-66	Cam Assembly to Bulkhead (18")
OL-K-66	Crankcase Tee to Cam Assembly Tee (5.25")
OL-K-96	Crankcase Tee to Cam Assembly Tee (10.5")
OL-N-96	Cam Assembly to Bulkhead (19")
11381	Flare Tee (45x4R)
16311	Female Flare Connector (46x4)
21215	45° Male Elbow (54x4)
21276	Male Elbow (54x5x4)
26242	Male Flare Connector (48x4)
26309	Male Flare Connector (48x5x4)
31114	90° Male Flare Elbow (49x4)
31174	90° Male Flare Elbow (49x5x4)
36037	Flare Elbow (50x4)

Throttle Rod Assemblies

309-46-T	C-46 Throttle Rod Assembly
309-66-T	C-66 Throttle Rod Assembly
309-96-T	C-96 Throttle Rod Assembly

Fan & Fan Hub Assemblies

356-T-66	C-66/C-96 Fan Assembly, Complete
356-66	C-66/C-96 Fan Hub Assembly (No Blades)
356-TRK-66	C-66/C-96 Fan Repair Kit

GILLETTE LOCATION 100 N HIGHWAY 14-16 PO BOX 3200 GILLETTE, WY 82716 P: (307) 682-5262 F: (307) 682-2240	OKLAHOMA LOCATION 1021 NE 29 TH ST OKLAHOMA CITY, OK 73129 P: (405) 602-6927 F: (405) 602-6933	TIMCOSERVICE.COM INFO@TIMCOSERVICE.COM TOLL FREE: (800) 688-4620	36
--	--	---	-----------

Miscellaneous Fan Parts

356-2-66	C-66/C-96 Fan Shaft w/ Bearing Grease Port
356-B-66-T	C-66/C-96 Steel Fan Blade, 6 Blade
LM11949/LM11910	Fan Hub Bearing

Miscellaneous Parts

23-B-46	Crankcase Breather
232-46	C-46/66 Valve Spring
232-96	C-96/106 Valve Spring
244-BC	Valve Cover Breather Assembly w/ Hose
244-BCP	Valve Cover Breather Assembly
25-66-T	Safety Fill Cover
250-46	Valve Cover Stud
250-96	Valve Cover Stud
252-A1-66	Rocker Arm Pin Stud
253-66	C-66 Rocker Arm Assembly
253-96	C-96/106 Rocker Arm Assembly
254-46	Valve Adjusting Screw
254-96	Valve Adjusting Screw
314-P-46	Fuel Pump Cover Plate, w/ Gasket
330-20-46-T	C-46/66 FM Magneto to Spark Plug Wire 45"
330-20-AB-46-T	C-46/66 FM Magneto to Spark Plug Wire 45" American Bosch
367-A-66	C-66 Pilot Bearing Housing
367-A-106	C-106 Pilot Bearing Housing
44-46	C-46/66 Oil Seal
44-96	C-96/106 Oil Seal
45X4R	Restrictor Tee
68-T-46	C-46 Crankshaft Main Bearing Set (Cup and Cone)
68-T-66	C-66 Crankshaft Main Bearing Set (Cup and Cone)
68-T-96	C-96 Crankshaft Main Bearing Set (Cup and Cone)
94-A-46	Relief Valve Spring
ASP-1	Oil Filler, Ball Valve Style
FM601-66/96	Ignition System 66/96

GILLETTE LOCATION 100 N HIGHWAY 14-16 PO BOX 3200 GILLETTE, WY 82716 P: (307) 682-5262 F: (307) 682-2240	OKLAHOMA LOCATION 1021 NE 29 TH ST OKLAHOMA CITY, OK 73129 P: (405) 602-6927 F: (405) 602-6933	TIMCOSERVICE.COM INFO@TIMCOSERVICE.COM TOLL FREE: (800) 688-4620	37
--	--	--	-----------

FM601-66/96 No Bracket	Ignition System 66/96 No Bracket
FMARROW-Stand	Arrow Stand
H100	Grommet
H-66	C-66 Pumper's Friend Radiator
H-106	C-106 Pumper's Friend Radiator
H-7#	Pumper's Friend Radiator Cap
MUF-1	Arrow Muffler

Clutch Assemblies

C107SP5	C-46 Clutch Assembly w/Drive Ring, Clutch Handle, and Pilot Bearing, 1-7/16" Shaft
C107SP5-DB	C-46 Clutch Assembly w/Drive Ring, Clutch Handle, and Pilot Bearing, 1-3/4" Shaft - Double Bearing
C107SP5-PL	C-46 Pilotless Clutch Assembly w/Drive Ring & Clutch Handle
C107SP4	C-66 Old Style Clutch Assembly w/Drive Ring, Clutch Handle, and Pilot Bearing, 1-7/16" Shaft - Double Bearing
C107SP4-DB	C-66 Old Style Clutch Assembly w/Drive Ring, Clutch Handle, and Pilot Bearing, 1-3/4" Shaft - Double Bearing
C107SP4-PL	C-66 Pilotless Clutch Assembly w/Drive Ring & Clutch Handle
C110HP4	C-66 New Style Clutch Assembly w/Drive Ring, Clutch Handle, and Pilot Bearing, 1-7/16" Shaft
C110HP3	C-96 Clutch Assembly w/Drive Ring, Clutch Handle, and Pilot Bearing
SP111HP3	C-106 Clutch Assembly w/Drive Ring, Clutch Handle, and Pilot Bearing

Clutch Conversion Kits *(Single to Double Bearing)*

7X-850-5	C-46 Conversion Kit w/ 1-7/16" Shaft
7X-850-4	C-66 Conversion Kit w/ 1-7/16" Shaft

GILLETTE LOCATION 100 N HIGHWAY 14-16 PO BOX 3200 GILLETTE, WY 82716 P: (307) 682-5262 F: (307) 682-2240	OKLAHOMA LOCATION 1021 NE 29 TH ST OKLAHOMA CITY, OK 73129 P: (405) 602-6927 F: (405) 602-6933	TIMCOSERVICE.COM INFO@TIMCOSERVICE.COM TOLL FREE: (800) 688-4620	38
--	--	--	-----------



<p><u>GILLETTE LOCATION</u> 100 N HIGHWAY 14-16 PO BOX 3200 GILLETTE, WY 82716 P: (307) 682-5262 F: (307) 682-2240</p>	<p><u>OKLAHOMA LOCATION</u> 1021 NE 29TH ST OKLAHOMA CITY, OK 73129 P: (405) 602-6927 F: (405) 602-6933</p>	<p><u>TIMCOSERVICE.COM</u> INFO@TIMCOSERVICE.COM TOLL FREE: (800) 688-4620</p>	<p>39</p>
--	--	--	------------------

C-46 Overhaul List

Qty.	Part Number	Description
1	12-46	Cylinder Sleeve Gasket
1	124-TRK-46	Oil Pump Kit
1	176-TRK-46	Governor Repair Kit
1	207-46	Governor Spring
1	222-46-T	Head Assembly
1	222-TRK-46	Head Repair Kit
2	224-46	Valve Guide
2	228-A-46	Valve Seat
1	23-B-46	Crankcase Breather
1	238-46-GHD	Head Gasket
2	78-T-46	Wrist Pin Bushing
1	79-46	Piston Pin
1	83-46	Con Rod Bearing
1	C107SP5-DB	Clutch (1-3/4" shaft)
1	OFK-1-T-KIT	Oil Filter Kit
2	T231-46	Valve
1	TAC-200-KIT	Air Cleaner
1	TCS-46	Cylinder Sleeve
1	TGS-46	Overhaul Gasket Set
1	TK-46	Carburetor Kit
1	TRS-46	Piston Ring Set
1	TVGS-46	Valve Grind Gaskets

GILLETTE LOCATION 100 N HIGHWAY 14-16 PO BOX 3200 GILLETTE, WY 82716 P: (307) 682-5262 F: (307) 682-2240	OKLAHOMA LOCATION 1021 NE 29 TH ST OKLAHOMA CITY, OK 73129 P: (405) 602-6927 F: (405) 602-6933	TIMCOSERVICE.COM INFO@TIMCOSERVICE.COM TOLL FREE: (800) 688-4620	40
--	--	---	-----------

C-66 Overhaul List

Qty.	Part Number	Description
1	12-66	Cylinder Sleeve Gasket
1	124-TRK-46	Oil Pump Kit
1	176-TRK-46	Governor Repair Kit
1	207-66	Governor Spring
1	222-66-T	Cylinder Head
1	222-TRK-66	Head Repair Kit
2	224-66	Valve Guide
2	228-A-66	Valve Seat
1	23-B-46	Crankcase Breather
1	238-66-GHD	Head Gasket
1	241-T-66	Valve Cover
1	356-T-66	Fan Assembly
1	356-TRK-66	Fan Hub Repair Kit
1	356-66	Fan Hub Assembly
1	76-T-66	Piston Assembly
2	78-T-66	Wrist Pin Bushing
1	79-T-66	Piston Pin
1	83-66	Con Rod Bearing
2	88-66	Con Rod Shim
1	C107SP4-DB	Clutch (1-7/16" Shaft)
1	C110HP4	Clutch (1-3/4" Shaft)
1	OFK-1-T-KIT	Oil Filter Kit
2	OLK-T-66-1	Basic Oil Line Kit
1	OLK-T-66-2	Full Oil Line Kit
2	T231-66	Valve
1	TAC-200-KIT	Air Cleaner
1	TCS-66	Cylinder Sleeve
1	TGS-66	Overhaul Gasket Set
1	TK-66	Carburetor Kit
1	TRS-66	Piston Ring Set
1	TVGS-66	Valve Grind Gaskets

GILLETTE LOCATION 100 N HIGHWAY 14-16 PO BOX 3200 GILLETTE, WY 82716 P: (307) 682-5262 F: (307) 682-2240	OKLAHOMA LOCATION 1021 NE 29 TH ST OKLAHOMA CITY, OK 73129 P: (405) 602-6927 F: (405) 602-6933	TIMCOSERVICE.COM INFO@TIMCOSERVICE.COM TOLL FREE: (800) 688-4620	41
--	--	---	-----------

C-96 Overhaul List

Qty.	Part Number	Description
1	12-96	Cylinder Sleeve Gasket
1	124-TRK-96	Oil Pump Kit
1	176-TRK-46	Governor Repair Kit
1	207-96	Governor Spring
1	222-96-T	Cylinder Head
1	222-TRK-96	Head Repair Kit
2	224-66	Valve Guide
2	228-A-96	Valve Seat
1	23-B-46	Crankcase Breather
1	238-96-GHD	Head Gasket
1	241-T-96	Valve Cover
1	330-20-96-T	Spark Plug Wire
1	356-T-66	Fan Assembly
1	356-TRK-66	Fan Hub Repair Kit
1	356-66	Fan Hub Assembly
1	76-T-96	Piston Assembly
2	78-T-96	Wrist Pin Bushing
1	79-T-96	Piston Pin
1	83-96	Con Rod Bearing
2	88-96	Con Rod Shim
1	C110HP3	Clutch
1	OFK-1-T-KIT	Oil Filter Kit
1	OLK-T-96-1	Basic Oil Line Kit
1	OLK-T-96-2	Full Oil Line Kit
2	T231-96	Valve
1	TAC-250-KIT	Air Cleaner
1	TCS-96	Cylinder Sleeve
1	TGS-96	Overhaul Gasket Set
1	TK-96	Carburetor Kit
1	TRS-96	Piston Ring Set
1	TVGS-96	Valve Grind Gaskets

GILLETTE LOCATION 100 N HIGHWAY 14-16 PO BOX 3200 GILLETTE, WY 82716 P: (307) 682-5262 F: (307) 682-2240	OKLAHOMA LOCATION 1021 NE 29 TH ST OKLAHOMA CITY, OK 73129 P: (405) 602-6927 F: (405) 602-6933	TIMCOSERVICE.COM INFO@TIMCOSERVICE.COM TOLL FREE: (800) 688-4620	42
--	--	---	-----------

C-106 Overhaul List

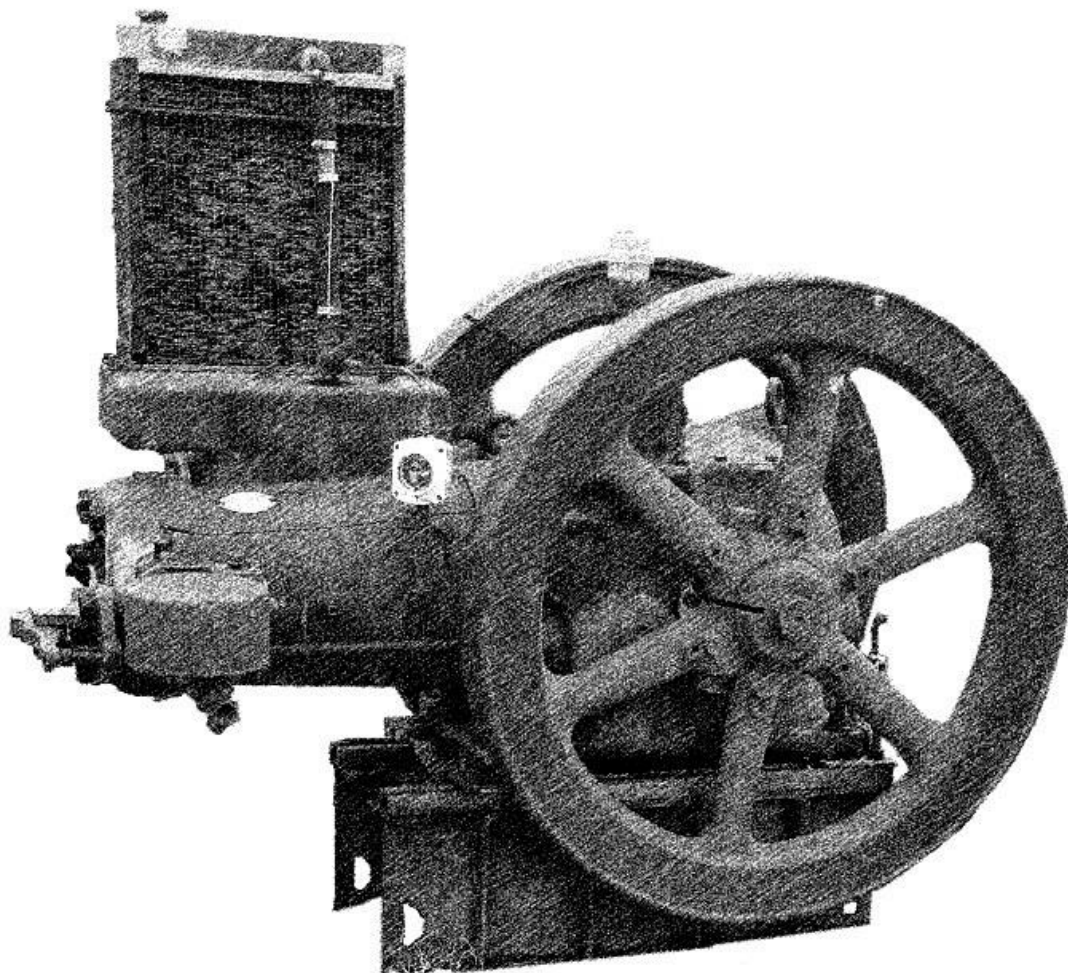
Qty.	Part Number	Description
1	12-106	Cylinder Sleeve Gasket
1	124-TRK-96	Oil Pump Kit
2	224-106	Valve Guide
1	23-B-46	Crankcase Breather
1	222-106-T	Head Assembly
1	238-106-GHD	Head Gasket
1	76-T-106	Piston Assembly
1	79-T-106	Piston Pin
1	OFK-1-T-KIT	Oil Filter Kit
1	SP111HP3	Clutch
1	TAC-250-KIT	Air Cleaner
1	TCS-106	Cylinder Sleeve
1	TGS-106	Overhaul Gasket Set
1	TK-106-AH	Carburetor Kit
1	TRS-106-AH	Piston Ring Set
1	TVGS-106	Valve Grind Gaskets

GILLETTE LOCATION 100 N HIGHWAY 14-16 PO BOX 3200 GILLETTE, WY 82716 P: (307) 682-5262 F: (307) 682-2240	OKLAHOMA LOCATION 1021 NE 29 TH ST OKLAHOMA CITY, OK 73129 P: (405) 602-6927 F: (405) 602-6933	TIMCOSERVICE.COM INFO@TIMCOSERVICE.COM TOLL FREE: (800) 688-4620	43
--	--	---	-----------



Fairbanks-Morse

Model ZC-118 through ZC-739



Carburetor Kits

TK-118/208	ZC-118/208 Carburetor Kit, 110 Carburetor & Adapter
TK-118/208-100	ZC-118/208 Carburetor Kit, 100 Carburetor & Adapter
TK-346-503	ZC-346/503 Carburetor Kit, 210 Carburetor & Adapter
TK-346-503-200	ZC-346/503 Carburetor Kit, 200 Carburetor & Adapter
TK-739	ZC-739 Carburetor Kit, 210 Carburetor & Adapter

Carburetor Related Parts

204-118	ZC-118/208 Butterfly Valve Shaft 1-1/4"
204-A-118	ZC-118 Butterfly Valve Shaft 1-1/8"
204-A-208	ZC-208 Butterfly Valve Shaft 1-1/8"
204-A-346	ZC-346 Butterfly Valve Shaft
204-A-503	ZC-503 Butterfly Valve Shaft
206-118	ZC-118/208 Butterfly Valve Shaft Lever
206-346	ZC-346/503/739 Butterfly Valve Shaft Lever
249-118/208	Carburetor to Head Gasket
259-F-118	ZC-118/208 Carburetor Elbow
326-118	ZC-118/208 Butterfly Valve Shaft Spring
B-203-118	ZC-118 Butterfly Valve 1-1/4"
B-203-A-118	ZC-118 Butterfly Valve 1-1/8"
B-203-C-118	ZC-118 Butterfly Valve Complete 1-1/4"
B-203-A-208	ZC-208 Butterfly Valve 1-3/8"
B-203-AC-208	ZC-208 Butterfly Complete Valve
B-203-346	ZC-346 Butterfly Valve
B-203-503	ZC-503 Butterfly Valve
B-326-346	ZC-346 Butterfly Shaft Spring
C-202-346	ZC-346 Butterfly Valve Casing
C-202-503	ZC-503 Butterfly Valve Casing
AH-2312	Air Horn Adapter, 2.312" bore
AH-2625	Air Horn Adapter, 2.625" bore
T-118-208	ZC-118/208 Carburetor Elbow Adapter
T-346-503	ZC-356/503 Carburetor Elbow Adapter

<p><u>GILLETTE LOCATION</u> 100 N HIGHWAY 14-16 PO BOX 3200 GILLETTE, WY 82716 P: (307) 682-5262 F: (307) 682-2240</p>	<p><u>OKLAHOMA LOCATION</u> 1021 NE 29TH ST OKLAHOMA CITY, OK 73129 P: (405) 602-6927 F: (405) 602-6933</p>	<p><u>TIMCOSERVICE.COM</u> INFO@TIMCOSERVICE.COM TOLL FREE: (800) 688-4620</p>	<p>45</p>
---	--	--	------------------

T-739FA	ZC-739 Carburetor Adapter
TAC-200-KIT	Air Cleaner Assembly with Elbow
TAC-250-KIT	Air Cleaner Assembly with Elbow
TAC-300-KIT	Air Cleaner Assembly with Elbow

Clutch Parts

10-AC10	Adjustment Ring
10-AMMA	Key Round End
2-AOF-9	Bearing Housing
3-AOF7	Outer Bearing Casing
3-AOF7A	Special Swivel Screw
4-AOF14	Shaft
6-3B-6	Sheave
6-AGG8	Handwheel
6-AMMA	Round End Key
7-AOF6	Sliding Collar
8-AH10C	Clutch Hood
8-AH6C	Clutch Hood

Head Gaskets

190-118	ZC-118 Head Gasket
190-118-GHD	ZC-118 Head Gasket, Heavy Duty Grafoil
190-208	ZC-208 Head Gasket
190-208-GHD	ZC-208 Head Gasket, Heavy Duty Grafoil
190-346	ZC-346 Head Gasket
190-346-GHD	ZC-346 Head Gasket, Heavy Duty Grafoil
190-503	ZC-503 Head Gasket
190-503-GHD	ZC-503 Head Gasket, Heavy Duty Grafoil
190-739	ZC-739 Head Gasket
190-739-GHD	ZC-739 Head Gasket, Heavy Duty Grafoil

Gasket Sets

TGS-118	ZC-118 Overhaul Gasket Set
---------	----------------------------

GILLETTE LOCATION 100 N HIGHWAY 14-16 PO BOX 3200 GILLETTE, WY 82716 P: (307) 682-5262 F: (307) 682-2240	OKLAHOMA LOCATION 1021 NE 29 TH ST OKLAHOMA CITY, OK 73129 P: (405) 602-6927 F: (405) 602-6933	TIMCOSERVICE.COM INFO@TIMCOSERVICE.COM TOLL FREE: (800) 688-4620	46
--	--	---	-----------

TGS-208	ZC-208 Overhaul Gasket Set
TGS-346	ZC-346 Overhaul Gasket Set
TGS-503	ZC-503 Overhaul Gasket Set

For a complete list of Fairbanks Morse gaskets, please see Gaskets section of catalog.

Governor Parts

222-346	ZC-346/503/739 Governor Speed Regulator Spring
33-118	ZC-118/208 Governor Drag Spring
33-346	ZC-346/503 Governor Drag Spring
34-118	ZC-118/208 Cam Rocker Roller
35-118	ZC-118/208 Exhaust Rocker Roller Pin
35-346	ZC-346/503/739 Exhaust Rocker Roller Pin with Cotter
35-A-346	ZC-346/503/739 Exhaust Rocker Roller Pin
3729-118	ZC-118/208 Governor Lever Shaft Roller
3729-346	ZC-346/503/739 Governor Lever Shaft Roller
405-A-118	ZC-118/208 Governor Pull Rod Ball Joint
405-A-346	ZC-346/503/739 Governor Pull Rod Ball Joint
48-118	ZC-118/208 Governor Pinion
48-346	ZC-346/503 Governor Pinion
505-346	ZC-346 Governor Spring Clevis
79-118	ZC-118/208 Clevis Pin, New Style
80-118	ZC-118/208 Governor Sleeve Pin
81-118	ZC-118/208 Governor Head
81-AC-118	ZC-118/208 Governor Complete Less Housing
81-346	ZC-346/503/739 Governor Spindle
81-C-346	ZC-346/503 Governor Spindle Complete
82-118	ZC-118/208 Governor Weight
82-346	ZC-346/503/739 Governor Weight
83-A-118	ZC-118/208 Governor Lever
83-A-346	ZC-346/503/739 Governor Lever
85-118	ZC-118/208 Governor Lever Shaft Assembly
85-346	ZC-346/503/739 Governor Lever Shaft Assembly
86-346	ZC-346/503/739 Governor Sleeve Pin
865-346	ZC-346/503/739 Governor Housing with Dowel
866-118	ZC-118/208 Flange Bushing
867-118	ZC-118/208 Bushing
868-118	ZC-118/208 Governor Head Thrust Washer

GILLETTE LOCATION 100 N HIGHWAY 14-16 PO BOX 3200 GILLETTE, WY 82716 P: (307) 682-5262 F: (307) 682-2240	OKLAHOMA LOCATION 1021 NE 29 TH ST OKLAHOMA CITY, OK 73129 P: (405) 602-6927 F: (405) 602-6933	TIMCOSERVICE.COM INFO@TIMCOSERVICE.COM TOLL FREE: (800) 688-4620	47
--	--	---	-----------

A-865-118	ZC-118 Governor Housing Assembly
-----------	----------------------------------

Wrist Pin & Bushing

7-118	ZC-118 Wrist Pin
7-208	ZC-208 Wrist Pin
7-346	ZC-346/503 Wrist Pin
17-208	ZC-208 Wrist Pin Bushing, Standard
17-208-003	ZC-208 Wrist Pin Bushing, .003 oversize
17-346	ZC-346/503 Wrist Pin Bushing, Standard
17-346-003	ZC-346/503 Wrist Pin Bushing, .003 oversize
17-346-005	ZC-346/503 Wrist Pin Bushing, .005 oversize

Connecting Rod & Pistons

176-118	ZC-118 Connecting Rod Bearing
176-208	ZC-208 Connecting Rod Bearing
176-346	ZC-346 Connecting Rod Bearing
176-503	ZC-503 Connecting Rod Bearing
176-739	ZC-739 Connecting Rod Bearing
32-346	ZC-346 Connecting Rod Bolt
32-503	ZC-503/739 Connecting Rod Bolt
5415-118	ZC-118 Connecting Oil Rod Thrower
5415-208	ZC-208 Connecting Oil Rod Thrower
5415-346	ZC-346 Connecting Oil Rod Thrower
5415-503	ZC-503 Connecting Oil Rod Thrower
T-110-118	ZC-118 Connecting Rod Shim Pack
T-110-208	ZC-208 Connecting Rod Shim Pack
T-110-346	ZC-346 Connecting Rod Shim Pack
T-110-503	ZC-503 Connecting Rod Shim Pack
T-110-739	ZC-739 Connecting Rod Shim Pack
71-118	ZC-118/208 Piston Pin Lock Pin with Cotter
71-346	ZC-346/503/739 Piston Pin Dowel Pin
A-110-118	ZC-118 Shim
A-110-208	ZC-208 Shim
A-110-346	ZC-346 Shim
A-110-503	ZC-503 Shim

GILLETTE LOCATION 100 N HIGHWAY 14-16 PO BOX 3200 GILLETTE, WY 82716 P: (307) 682-5262 F: (307) 682-2240	OKLAHOMA LOCATION 1021 NE 29 TH ST OKLAHOMA CITY, OK 73129 P: (405) 602-6927 F: (405) 602-6933	TIMCOSERVICE.COM INFO@TIMCOSERVICE.COM TOLL FREE: (800) 688-4620	48
--	--	--	-----------

A-150-188	ZC-118 Connecting Rod Bolt
A-150-208	ZC-208 Connecting Rod Bolt
B-110-118	ZC-118 Shim
B-110-208	ZC-208 Shim
B-110-346	ZC-346 Shim
B-110-503	ZC-503 Shim
B-5-118	ZC-118 Piston, Bare
B-5-208	ZC-208 Piston, Bare
C-110-118	ZC-118 Shim
C-110-208	ZC-208 Shim
C-110-346	ZC-346 Shim
C-110-503	ZC-503 Shim
D-110-503	ZC-503 Shim

Piston Ring Sets

TRS-118-STD	ZC-118 Piston Ring Set, Standard
TRS-208-STD	ZC-208 Piston Ring Set, Standard
TRS-208-010	ZC-208 Piston Ring Set, .010 Oversize
TRS-208-020	ZC-208 Piston Ring Set, .020 Oversize
TRS-346-STD	ZC-346 Piston Ring Set, Standard
TRS-346-010	ZC-346 Piston Ring Set, .010 Oversize
TRS-346-020	ZC-346 Piston Ring Set, .020 Oversize
TRS-503-STD	ZC-503 Piston Ring Set, Standard
TRS-503-010	ZC-503 Piston Ring Set, .010 Oversize
TRS-503-020	ZC-503 Piston Ring Set, .020 Oversize
TRS-739-STD	ZC-739 Piston Ring Set, Standard

Cooling Parts

1118-D-208	ZC-208 Radiator Core Support
1124-A-118	ZC-118 Core Radiator with Gasket
1124-A-208	ZC-208 Core Radiator with Gasket
1124-A-346	ZC-346 Core Radiator with Gasket
1124-A-503	ZC-503 Core Radiator with Gasket
2288-208	ZC-208 Radiator Fan Guard
2800-1-118	ZC-118 Flat Strap 1X5.5

GILLETTE LOCATION 100 N HIGHWAY 14-16 PO BOX 3200 GILLETTE, WY 82716 P: (307) 682-5262 F: (307) 682-2240	OKLAHOMA LOCATION 1021 NE 29 TH ST OKLAHOMA CITY, OK 73129 P: (405) 602-6927 F: (405) 602-6933	TIMCOSERVICE.COM INFO@TIMCOSERVICE.COM TOLL FREE: (800) 688-4620	49
--	--	--	-----------

2800-2-118	ZC-118 Flat Strap 1X7
3726-LD-346	ZC-346/503 Fan Assembly
498-P	Fan Hub Grease Retainer
6213-D	Oil Retainer
6783D	Fan Bearing Cup & Cone
7804-D	ZC-118/208 Spindle
7F-118	Radiator Core Felt
8006-LD-208	Blade Assembly

Crankcase Parts

23-118	ZC-118 Main Bearing Old Style
23-B-118	ZC-118 Bearing Cup
23-C-118	ZC-118 Bearing Cone
23-D-118	ZC-118 Bearing Cone
23-208	ZC-208 Main Bearing Old Style
23-C-346	ZC-346 Bearing Cone
23-B-503	ZC-503 Bearing Cup
23-C-503	ZC-503 Bearing Cone
265-118	ZC-118/208 Starter Crank Pawl
266-118	ZC-118/208 Starter Crank Pawn Pin
267-118	ZC-118/208 Starter Crank Pawn Spring
29-A-118	ZC-118 Crankshaft Pinion (New Style ID 2")
3033-D-1-346	ZC-346 Bearing Cone
3033-D-2-346	ZC-346 Bearing Cup
308-118	ZC-118/208 Governor Spring
9556-118	ZC-118 Oil Seal
9556-208	ZC-208 Oil Seal
9556-346	ZC-346 Oil Seal
9556-503	ZC-503 Oil Seal
A-607-A-503	ZC-503 Fan Drive Sheave
B-126-208	ZC-208 Main Bearing Shim

Rocker Arm and Cam Parts

1009-346	ZC-346/503 Rocker Arm Bushing
128-A-346	ZC-346/503 Cam

<p>GILLETTE LOCATION 100 N HIGHWAY 14-16 PO BOX 3200 GILLETTE, WY 82716 P: (307) 682-5262 F: (307) 682-2240</p>	<p>OKLAHOMA LOCATION 1021 NE 29TH ST OKLAHOMA CITY, OK 73129 P: (405) 602-6927 F: (405) 602-6933</p>	<p>TIMCOSERVICE.COM INFO@TIMCOSERVICE.COM TOLL FREE: (800) 688-4620</p>	<p>50</p>
---	--	--	------------------

1608-B	Rocker Arm Pin Grease Zerk
1A-3/4	Rocker Arm Set Screw Lockwasher
27A-3/4	Rocker Arm Set Screw Nut
28-A-118	ZC-118/208 Cam Gear with Cam
28-A-346	ZC-346/503 Cam Gear with Cam
28-739	ZC-739 Cam Gear with Cam
31-346	ZC-346/503 Cam Gear Adjusting Washer
34-118	Cam Gear Rocker Roller
35-118	Exhaust Rocker Roller Pin
35-A-346	Cam Roller Pin with Cotter
36-T-118	Exhaust Rod Complete
36-T-208	Exhaust Rod Complete
36-T-346	Exhaust Rod Complete
36-T-503	Exhaust Rod Complete
36-T-739	Exhaust Rod Complete
39-118	ZC-118/208 Rocker Arm Complete
39-B-118	ZC-118/208 Rocker Arm Bushing
39-T-346	ZC-346/503 Rocker Arm with Bushing
39-B-739	ZC-739 Rocker Arm with Needle Bearing
40-118	ZC-118/208 Rocker Arm Pin
40-A-346	ZC-346/503 Rocker Arm Pin
41-208	ZC-208 Rocker Arm Bracket
41-346	ZC-346/503 Rocker Arm Bracket
50-C-118	ZC-118/208 Cam Rocker Complete
50-346	ZC-346/503/739 Cam Rocker
50-T-346	ZC-346/503/739 Cam Rocker Complete
552-346	ZC-346 Rocker Arm Roller
553-346	ZC-346 Roller Pin Nut
553-A-346	ZC-346 Exhaust Roller Rocker
58-A-118	ZC-118/208 Exhaust Rocker Arm Shaft
911-346	ZC-346 Rocker Arm Bracket Bushing
911-SB-346	ZC-346 Rocker Arm Bracket Bushing, Split
A-2244-118	ZC-118 Collar
A-2244-346	ZC-346 Collar
A-31-A-118	ZC-118 Cam Gear Shaft Collar
B-1612-X-739	ZC-739 Rocker Arm Needle Bearing
B-31-118	ZC-118 Washer

<u>GILLETTE LOCATION</u> 100 N HIGHWAY 14-16 PO BOX 3200 GILLETTE, WY 82716 P: (307) 682-5262 F: (307) 682-2240	<u>OKLAHOMA LOCATION</u> 1021 NE 29 TH ST OKLAHOMA CITY, OK 73129 P: (405) 602-6927 F: (405) 602-6933	<u>TIMCOSERVICE.COM</u> INFO@TIMCOSERVICE.COM TOLL FREE: (800) 688-4620	51
--	--	---	-----------

Valve Kits

9-BC-118	ZC-118 Intake Valve Kit
9-BC-208	ZC-208 Intake Valve Kit
9-AC-346	ZC-346 Intake Valve Kit
9-AC-503	ZC-503 Intake Valve Kit
10-T-118	ZC-118 Exhaust Valve Kit
10-C-208	ZC-208 Exhaust Valve Kit
10-C-346	ZC-346 Exhaust Valve Kit
10-C-503	ZC-503 Exhaust Valve Kit
3-BC-TRK-118	ZC-118 Head Repair Kit
3-BC-TRK-208	ZC-208 Head Repair Kit, Two Valve
3-DC-TRK1-346	ZC-346 Head Repair Kit, Two Valve
3-DC-TRK2-346	ZC-346 Head Repair Kit, Three Valve
3-DC-TRK1-503	ZC-503 Head Repair Kit, Two Valve
3-DC-TRK2-503	ZC-503 Head Repair Kit, Three Valve
3-DC-TRK2-739	ZC-739 Head Repair Kit, Two Valve

Miscellaneous Valve Parts

9-B-118	ZC-118 Intake Valve
9-B-208	ZC-208 Intake Valve
9-A-346	ZC-346 Intake Valve
9-A-503	ZC-503 Intake Valve
10-118	ZC-118 Exhaust Valve
10-208	ZC-208 Exhaust Valve
10-346	ZC-346 Exhaust Valve
10-503	ZC-503 Exhaust Valve
10-739	ZC-739 Exhaust Valve
11-118/208	ZC-118/208 Exhaust Spring Collar
11-346/503	ZC-346/503 Exhaust Spring Collar
11-739	ZC-739 Exhaust Spring Collar
120-118/208	ZC-118/208 Intake Valve Drag Spring
120-346/503	ZC-346/503 Intake Valve Drag Spring
121-A-346/503	ZC-346/503 Intake Valve Drag Spring Collar

GILLETTE LOCATION 100 N HIGHWAY 14-16 PO BOX 3200 GILLETTE, WY 82716 P: (307) 682-5262 F: (307) 682-2240	OKLAHOMA LOCATION 1021 NE 29 TH ST OKLAHOMA CITY, OK 73129 P: (405) 602-6927 F: (405) 602-6933	TIMCOSERVICE.COM INFO@TIMCOSERVICE.COM TOLL FREE: (800) 688-4620	52
--	--	---	-----------

121-B-118/208	ZC-118/208 Intake Valve Drag Spring Collar
310-118/208	ZC-118/208 Intake Valve Spring
310-346	ZC-346 Intake Valve Spring
310-503	ZC-503 Intake Valve Spring
317-118	ZC-118 Exhaust Valve Spring
317-208	ZC-208 Exhaust Valve Spring
317-346/503	ZC-346/503 Exhaust Valve Spring
317-739	ZC-739 Exhaust Valve Spring
617-118/208	ZC-118/208 Intake Valve Bumper Spring
617-346/503	ZC-346/503 Intake Valve Bumper Spring
7963-346	ZC-346 Valve Seat
7963-346-005	ZC-346 Valve Seat, .005 Oversize
7963-346-010	ZC-346 Valve Seat, .010 Oversize
7963-503	ZC-503 Valve Seat
7963-739	ZC-739 Valve Seat
87-118	ZC-118 Valve Seat
87-118-003	ZC-118 Valve Seat, .003 Oversize
87-118-005	ZC-118 Valve Seat, .005 Oversize
87-118-010	ZC-118 Valve Seat, .010 Oversize
87-208	ZC-208 Valve Seat

Valve Guides

287-118	ZC-118/208 Exhaust Valve Guide, Standard
287-118-003	ZC-118/208 Exhaust Valve Guide, .003 Oversize
287-118-005	ZC-118/208 Exhaust Valve Guide, .005 Oversize
287-118-010	ZC-118/208 Exhaust Valve Guide, .010 Oversize
287-118-040	ZC-118/208 Exhaust Valve Guide, .040 Oversize
287-346	ZC-346/503 Exhaust Valve Guide, Standard
287-346-003	ZC-346/503 Exhaust Valve Guide, .003 Oversize
287-346-005	ZC-346/503 Exhaust Valve Guide, .005 Oversize
287-346-010	ZC-346/503 Exhaust Valve Guide, .010 Oversize
287-346-040	ZC-346/503 Exhaust Valve Guide, .040 Oversize
287-739	ZC-739 Exhaust Valve Guide, Standard
287-739-003	ZC-739 Exhaust Valve Guide, .003 Oversize
287-739-005	ZC-739 Exhaust Valve Guide, .005 Oversize
287-739-010	ZC-739 Exhaust Valve Guide, .010 Oversize

<p>GILLETTE LOCATION 100 N HIGHWAY 14-16 PO BOX 3200 GILLETTE, WY 82716 P: (307) 682-5262 F: (307) 682-2240</p>	<p>OKLAHOMA LOCATION 1021 NE 29TH ST OKLAHOMA CITY, OK 73129 P: (405) 602-6927 F: (405) 602-6933</p>	<p>TIMCOSERVICE.COM INFO@TIMCOSERVICE.COM TOLL FREE: (800) 688-4620</p>	<p>53</p>
---	--	--	------------------

287-739-040	ZC-739 Exhaust Valve Guide, .040 Oversize
288-118	ZC-118/208 Intake Valve Guide, Standard
288-118-003	ZC-118/208 Intake Valve Guide, .003 Oversize
288-118-005	ZC-118/208 Intake Valve Guide, .005 Oversize
288-118-010	ZC-118/208 Intake Valve Guide, .010 Oversize
288-118-040	ZC-118/208 Intake Valve Guide, .040 Oversize
288-346	ZC-346/503 Intake Valve Guide, Standard
288-346-003	ZC-346/503 Intake Valve Guide, .003 Oversize
288-346-005	ZC-346/503 Intake Valve Guide, .005 Oversize
288-346-010	ZC-346/503 Intake Valve Guide, .010 Oversize
288-346-040	ZC-346/503 Intake Valve Guide, .040 Oversize

Spark Plug Wire Assembly

752-208	ZC-208 Spark Plug Wire Assembly
752-346	ZC-346 Spark Plug Wire Assembly
752-503	ZC-503 Spark Plug Wire Assembly

Clutch Drive Plates

14E6	Clutch Drive Plate for #6 Clutch
14E10	Clutch Drive Plate for #10 Clutch

Oil-Less Bronze Bushings

13-A6	Oil-less Bronze Bushing
13-A10	Oil-less Bronze Bushing

Fan & Fan Hub Assemblies

1141-118	ZC-118/208 Fan Hub Assembly
1141-346	ZC-346/503 Fan Hub Assembly
1141-T-346	ZC-346/503 Fan Hub Assembly, with Blades

GILLETTE LOCATION 100 N HIGHWAY 14-16 PO BOX 3200 GILLETTE, WY 82716 P: (307) 682-5262 F: (307) 682-2240	OKLAHOMA LOCATION 1021 NE 29 TH ST OKLAHOMA CITY, OK 73129 P: (405) 602-6927 F: (405) 602-6933	TIMCOSERVICE.COM INFO@TIMCOSERVICE.COM TOLL FREE: (800) 688-4620	54
--	--	---	-----------

Flywheel Ignition Kits

FM601-FM208	FM208 Flywheel Ignition /w Bracket and Wiring Harness
FM601FM208 No Bracket	FM208 Flywheel Ignition Wiring Harness

Push Rod Assemblies

36-346-T	ZC-346 Exhaust Push Rod
36-503-T	ZC-503 Exhaust Push Rod
36-739-T	ZC-739 Exhaust Push Rod
55-118-T	ZC-118/208 Push Rod Cap
55-346-T	ZC-346/503/739 Push Rod Cap

Throttle Assemblies

205-T-118	ZC-118 Throttle Rod Assembly
205-T-208	ZC-208 Throttle Rod Assembly
205-T-346	ZC-346 Throttle Rod Assembly
205-T-503	ZC-503 Throttle Rod Assembly

Miscellaneous Parts

205C-118-T	ZC-118 Throttle Rod Assembly
205C-208-T	ZC-208 Throttle Rod Assembly
205C-346-T	ZC-346 Throttle Rod Assembly
205C-503-T	ZC-503 Throttle Rod Assembly
233-BC	Breather Assembly
298-118	ZC-118/208 Name Plate
298-346	ZC-346/503/739 Name Plate
752-118	ZC-118/208 Magneto Cable with Terminal (44")
752-346	ZC-346/503 Magneto Cable with Terminal (51")
ACE-299-118	Oil Sight Glass Assembly
ASP-2	Breather Auxiliary
ASP-3	Water Filler Nipple

GILLETTE LOCATION 100 N HIGHWAY 14-16 PO BOX 3200 GILLETTE, WY 82716 P: (307) 682-5262 F: (307) 682-2240	OKLAHOMA LOCATION 1021 NE 29 TH ST OKLAHOMA CITY, OK 73129 P: (405) 602-6927 F: (405) 602-6933	TIMCOSERVICE.COM INFO@TIMCOSERVICE.COM TOLL FREE: (800) 688-4620	55
--	--	---	-----------



IMPCO



Carburetors

CA100-12	100 Carburetor, 1.5" SAE Flange, 2.312" Air Horn
110-12	110 Carburetor, 1.5" SAE Flange, 2.312" Air Horn
200-4	200 Carburetor, 1.75" SAE Flange, 2.625" Air Horn
200-6	200 Carburetor, 2" SAE Flange, 3" Air Horn
210-4	210 Carburetor, 1.75" SAE Flange, 2.625" Air Horn
210-6	210 Carburetor, 2" SAE Flange, 3" Air Horn
425-60	425 Carburetor, 4" Air Horn
CA125-6	125 Carburetor, 1.25" X 1.50 SAE Flange, 5.125" Air Horn

Mixer Assemblies

CA100M-4	100 Mixer Assembly, 2.312" Air Horn
CA55M-500	55-500L Mixer Assembly, 2.063" Air Horn
110M-4	110 Mixer Assembly, 2.312" Air Horn
200M-1	200 Mixer Assembly, 2.625" Air Horn
200M-2	200 Mixer Assembly, 3" Air Horn
210M-1	210 Mixer Assembly, 2.625" Air Horn
210M-2	210 Mixer Assembly, 3" Air Horn
225M-2	225 Mixer Assembly
425M-2	425 Mixer Assembly
600XM-2	600 Mixer Assembly

Carburetor Parts

200AV	2" Air Vent Hose
258AV	2-5/8" Air Vent Hose
300AV	3" Air Vent Hose
400AV	4" Air Vent Hose
A110-DP-2	110 Dashpot Assembly
A210-DP-2	210 Dashpot Assembly
AA2-15	4" Air Horn for CA425 Carburetor
AB1-54	Fuel Valve

GILLETTE LOCATION 100 N HIGHWAY 14-16 PO BOX 3200 GILLETTE, WY 82716 P: (307) 682-5262 F: (307) 682-2240	OKLAHOMA LOCATION 1021 NE 29 TH ST OKLAHOMA CITY, OK 73129 P: (405) 602-6927 F: (405) 602-6933	TIMCOSERVICE.COM INFO@TIMCOSERVICE.COM TOLL FREE: (800) 688-4620	57
--	--	---	-----------

AD1-28-1	425 Idler Diaphragm, with Gasket
AL1-7-1	Throttle Lever, 2-5/16" Long
AL1-8-2	Throttle Stop Assembly, .313" ID
AL1-9-1	Throttle Lever, 2-7/8" Long
AL1-10	Throttle Stop Assembly, .375" ID
AL1-12-1	Throttle Lever, 3-3/4" Long
AS2-50-2	Return Spring
AS3-10	Throat Adapter (110/110 Carburetors)
AS3-21	210 Air Gas Valve Assembly
AS3-22	110 Air Gas Valve Assembly
AS3-45	Throat Spacer (200/210 Carburetors)
AT2-16-1	Throat Assembly, 1.25" SAE to 1.50" SAE
AT2-25	Impco Throttle Body
AT2-3	Throat Assembly, 1.25" SAE
AT2-4-1	Throat Assembly, 1.50" SAE
AT2-4-2	Throat Assembly, 1.50" SAE
AT2-4-3	Throat Assembly 1.75" SAE
AT2-5	Throat Assembly, 1.75" SAE
AT2-6	Throat Assembly, 2" SAE
AV1-12-2	200 Diaphragm Assembly
AV1-13-3	200 Diaphragm Assembly, with Check Valve
AV1-14-3	100 Diaphragm Assembly
AV1-16-2	425 Diaphragm Assembly
B2-12	100/110 Oilite Bearing
B2-13	200/210 Oilite Bearing
BV1-12	200 Valve Assembly
BV1-14	100 Valve Assembly
C1-17	100 Cover
C1-26	125 Cover
CT425M-2	Carburetor Mixer
D1-12-2	210 Diaphragm, Silicone
D1-13-2	110 Diaphragm, Silicone
D1-16-2	200/225 Diaphragm, Silicone
D1-17-2	100 Diaphragm, Silicone
D1-20-2	600 Diaphragm, Silicone
D1-20-3	600 Diaphragm, Flouro-Silicone
D1-25	425 Diaphragm Assembly
DV1-12	225 Valve Assembly

<u>GILLETTE LOCATION</u> 100 N HIGHWAY 14-16 PO BOX 3200 GILLETTE, WY 82716 P: (307) 682-5262 F: (307) 682-2240	<u>OKLAHOMA LOCATION</u> 1021 NE 29 TH ST OKLAHOMA CITY, OK 73129 P: (405) 602-6927 F: (405) 602-6933	<u>TIMCOSERVICE.COM</u> INFO@TIMCOSERVICE.COM TOLL FREE: (800) 688-4620	58
--	--	---	-----------

EV	2 State Converter/Regulator
F2-4	Butterfly, 1.5" Diameter
F2-5	Butterfly, 1.75" Diameter
F2-6	Butterfly, 2" Diameter
G1-11	100/110 Gasket, Throttle Body to Mixer
G1-13	110 Gasket, Plate to Body
G1-17	Gasket, 1" SAE Flange
G1-18	Gasket, 1.25" SAE Flange
G1-19	Gasket, 1.50" SAE Flange
G1-20	210 Gasket, Plate to Body
G1-21	200/210 Gasket, Throttle Body to Mixer
G1-23	Gasket, 1.75" SAE Flange
G1-24	Gasket, 2" SAE Flange
G1-25	425 Gasket, Adapter to Throttle Body
G1-27	Gasket, 2.5" SAE Flange
G1-28	425 Gasket, 3" SAE Flange
G1-56	Gasket, AT2-16
G1-66	425 Gasket, Air Horn
G1-74	Gasket, Mixer to Adapter
G1-76-1	600 Gasket, body to Air Horn
G1-78-1	Gasket, Throttle Body to Mixer
JB-2	Converter, Negative Pressure, Silicon Diaphragm
KN	Regulator
P2-13	Cover
P2-15	Plate, Backup
P2-21	Plate, Backup
P2-22	Plate, Backup
R1-17	Ring, Air Valve
R1-19	Ring, Air Valve
R1-9	Ring, Seal Retainer, .313 Shaft
R1-30	Ring Shim
RK-B2-12	Repair Kit, 5/16 Shaft
RK-CA55	Repair Kit for CA55 Carb
RK-J-2	Repair Kit for Model J
S1-12	Screw, 8-32 X 5/16"
S1-18	Pin, Throttle Stop Screw
S1-19	Screw, 12-24 X 5/8"
S1-22	Screw, 5/32 X 1/4"

GILLETTE LOCATION 100 N HIGHWAY 14-16 PO BOX 3200 GILLETTE, WY 82716 P: (307) 682-5262 F: (307) 682-2240	OKLAHOMA LOCATION 1021 NE 29 TH ST OKLAHOMA CITY, OK 73129 P: (405) 602-6927 F: (405) 602-6933	TIMCOSERVICE.COM INFO@TIMCOSERVICE.COM TOLL FREE: (800) 688-4620	59
--	--	--	-----------

S1-28	Screw, Idle, 3/8-16 X 1-1/2" (200/210)
S1-3	Screw, 10-24 X 5/8"
S1-41	Screw, 10-24 X 1 X 3/8"
S1-63	Screw, 12-24 X 1-1/2"
S1-74	Screw, Idle, 3/8-16 X 1"
S2-13	Spring, Air Valve (110)
S2-16	Spring, Idle Screw (200/100)
S2-17	Spring, Air Valve (200/100)
S2-85	Spring, Air Valve (100)
S2-88	Spring, Idle Screw (100/110)
S3-11	Seal, 9.5mm
S5-2	Throttle Shaft, 8.0mm (.310")
S5-3	Throttle Shaft, 9.5mm (.375")

Dry Air Cleaner Assemblies & Accessories

TAC-200-KIT	Air Cleaner Assembly with Adapter Elbow
TAC-250-KIT	Air Cleaner Assembly with Adapter Elbow
TAC-300-KIT	Air Cleaner Assembly with Adapter Elbow
TAC-200	Air Cleaner
TAC-250	Air Cleaner
TAC-300	Air Cleaner
TAC-250-BASE	Filter Base, 2.5" NPT
TAC-300-BASE	Filter Base, 3" NPT
TAC-200-TOP	Air Cleaner Top Cover
TAC-250-TOP	Air Cleaner Top Cover
TAC-300-TOP	Air Cleaner Top Cover
TACA-250	Elbow Adapter, 200/250
TACA-300	Elbow Adapter, 300
TACE-200	Air Cleaner Element, Washable
TACE-250	Air Cleaner Element, Washable
TACE-300	Air Cleaner Element, Washable
TACA-250-S	Air Cleaner Spacer
TACA-300-S	Air Cleaner Spacer

GILLETTE LOCATION 100 N HIGHWAY 14-16 PO BOX 3200 GILLETTE, WY 82716 P: (307) 682-5262 F: (307) 682-2240	OKLAHOMA LOCATION 1021 NE 29 TH ST OKLAHOMA CITY, OK 73129 P: (405) 602-6927 F: (405) 602-6933	TIMCOSERVICE.COM INFO@TIMCOSERVICE.COM TOLL FREE: (800) 688-4620	60
--	--	---	-----------

Vortex Oil Bath Air Cleaners

S-78	Air Cleaner Assembly
S-110-E	Air Cleaner Assembly
SA-60	Air Cleaner Assembly
SA-78	Air Cleaner Assembly
SA-90	Air Cleaner Assembly
SA-110	Air Cleaner Assembly

<p><u>GILLETTE LOCATION</u> 100 N HIGHWAY 14-16 PO BOX 3200 GILLETTE, WY 82716 P: (307) 682-5262 F: (307) 682-2240</p>	<p><u>OKLAHOMA LOCATION</u> 1021 NE 29TH ST OKLAHOMA CITY, OK 73129 P: (405) 602-6927 F: (405) 602-6933</p>	<p><u>TIMCOSERVICE.COM</u> INFO@TIMCOSERVICE.COM TOLL FREE: (800) 688-4620</p>	<p>61</p>
--	--	--	------------------



Clutches

WPT, Twin Disk, and PEC



PEC
MANUFACTURING

Clutch Assemblies

C107CP	7" Clutch Pack
C107SP4	7" Clutch, Single Disc, SAE #4 Housing, Single Bearing
C107SP4-DB	7" Clutch, Single Disc, SAE #4 Housing, Double Bearing
C107SP5-DB	7" Clutch, Single Disc, SAE #5 Housing, Double Bearing
C108HP4	8" Clutch, Single Disc, SAE #4 Housing
C110CP	10" Clutch Pack
C110HP3	10" Clutch, Single Disc, SAE #3 Housing
C110HP4	10" Clutch, Single Disc, SAE #4 Housing
SP111CP	11" Clutch Pack
SP111HP2	11" Clutch, Single Disc, SAE #2 Housing
SP111HP3	11" Clutch, Single Disc, SAE #4 Housing
SP211HP2	11" Clutch, Double Disc, SAE #2 Housing
SP211HP3	11" Clutch, Double Disc, SAE #3 Housing
SP211HP3-A-62	11" Clutch, Double Disc, SAE #3 Housing (A-62 Engine)
SP114CP	14" Clutch Pack
SP114HP1	14" Clutch, Single Disc, SAE #1 Housing
SP214CP-Small Bore	14" Clutch Pack, Small Bore
SP214HP0	14" Clutch, Double Disc, SAE #0 Housing
SP314CP	14" Clutch Pack Bronze Collar
SP314CP-BB	14" Clutch Pack Ball Bearing Collar RF 38 Friction Material
SP314HP0	14" Clutch, Triple Disc, SAE #0 Housing

Clutch Assemblies (Pilotless)

SP111HP3-PL	11" Clutch, Single Disc, SAE #3, Pilotless
SP211HP2-PL	11" Clutch, Single Disc, SAE #2 Housing, Pilotless
SP211HP3-PL	11" Clutch, Double Disc, SAE #3, Pilotless
SP114HP1-PL	14" Clutch, Single Disc, SAE #1, Pilotless
SP214HP0-PL	14" Clutch, Double Disc, SAE #0, Pilotless

GILLETTE LOCATION 100 N HIGHWAY 14-16 PO BOX 3200 GILLETTE, WY 82716 P: (307) 682-5262 F: (307) 682-2240	OKLAHOMA LOCATION 1021 NE 29 TH ST OKLAHOMA CITY, OK 73129 P: (405) 602-6927 F: (405) 602-6933	TIMCOSERVICE.COM INFO@TIMCOSERVICE.COM TOLL FREE: (800) 688-4620	63
--	--	---	-----------

Friction Plates

A-3507-S	6" Clutch Plate, 3 Piece
A-5436	7" Clutch Plate, 1 Piece
A-5436-A	7" Clutch Plate, 2 Piece
A-5436-S	7" Clutch Plate, 3 Piece
6479-S	8" Clutch Plate, 1 Piece
5878	10" Clutch Plate, 1 Piece
5878-D	10" Clutch Plate, 2 Piece
5878-S	10" Clutch Plate, 3 Piece
5878-KEVLAR	10" Clutch Plate, 1 Piece, Kevlar
O6314F	10" Sintered Iron Clutch Plate
A-5579	11" Clutch Plate, 1 Piece
A-5579-A	11" Clutch Plate, 3 Piece
A-5579-KEVLAR	11" Clutch Plate, 1 Piece, Kevlar
O6310L	11" Sintered Iron Clutch Plate
5659-P	14" Clutch Plate, 1 Piece
5659-B	14" Clutch Plate, 3 Piece
5659-K	14" Clutch Plate, 1 Piece
5659-L	14" Clutch Plate, 3 Piece
5659-KEVLAR	14" Clutch Plate, 1 Piece, Kevlar
O5499E	14" Sintered Iron Clutch Plate. 9.25" ID
5658-C	18" Clutch Plate, 3 Piece
5658-P	18" Clutch Plate, 1 Piece
6971-B	21" Clutch Plate, 3 Piece

Drive Rings

6939	106 Drive Ring
6661	107 Drive Ring
5805A	108 Drive Ring
6187E	110 Drive Ring
6625D	111 Drive Ring
6931T	211 Drive Ring
5712B	114 Drive Ring
5713D	214 Drive Ring

GILLETTE LOCATION 100 N HIGHWAY 14-16 PO BOX 3200 GILLETTE, WY 82716 P: (307) 682-5262 F: (307) 682-2240	OKLAHOMA LOCATION 1021 NE 29 TH ST OKLAHOMA CITY, OK 73129 P: (405) 602-6927 F: (405) 602-6933	TIMCOSERVICE.COM INFO@TIMCOSERVICE.COM TOLL FREE: (800) 688-4620	64
--	--	---	-----------

Hub & Back Plates

A3088	7" Hub & Back Plate
6030	10" Hub & Back Plate
ZA6505A	111 Hub & Back Plate
ZA6620A	114 Hub & Back Plate
ZA6519E	214 Hub & Back Plate
ZA6511A	314 Hub & Back Plate

Clutch Shafts

4879	110 Clutch Shaft, Drilled
4879AU	110 Clutch Shaft, Solid
A5188	111 Clutch Shaft, Drilled
A5188AZ	111 Clutch Shaft, Solid
A5190	114 Clutch Shaft, Drilled
A5190AO	114 Clutch Shaft, Solid
A6619K	314 Clutch Shaft, Solid
A6691	211 Clutch Shaft, Drilled
A6691AC	211 Clutch Shaft, Solid
B5027A	214 Clutch Shaft, Solid
XA3026	106/107 Clutch Shaft, Single Bearing, Drilled (1-7/16")
XA3026AN	106/107 Clutch Shaft, Single Bearing, Drilled (1-3/4")
XA3026BD	106/107 Clutch Shaft, Double Bearing, Drilled (1-7/16")

Operating Shafts

1094C	Operating Shaft (SP114, SP214, SP314)
1144AK	Operating Shaft (SPE211)
1144E	Operating Shaft (SP111, SP211)
1144F	Operating Shaft (C108, C110) #3 Housing
1144X	Operating Shaft (SPE214, SPE314) #0 Housing
1144Z	Operating Shaft (SPE114, SPE214, SPE314) #1 Housing
1580A	Operating Shaft (SP214, SP314)
2757	Operating Shaft (C106, C107, C108, C110) #4/#5 Housing

GILLETTE LOCATION 100 N HIGHWAY 14-16 PO BOX 3200 GILLETTE, WY 82716 P: (307) 682-5262 F: (307) 682-2240	OKLAHOMA LOCATION 1021 NE 29 TH ST OKLAHOMA CITY, OK 73129 P: (405) 602-6927 F: (405) 602-6933	TIMCOSERVICE.COM INFO@TIMCOSERVICE.COM TOLL FREE: (800) 688-4620	65
--	--	--	-----------

Sliding Sleeve Assemblies

S384	Sliding Sleeve Assembly (C108, C110)
S385	Sliding Sleeve Assembly (C110)
S387	Sliding Sleeve Assembly (C106, C107)
S598	Sliding Sleeve Assembly (SP214, SP314) 3.5" Bore
S600	Sliding Sleeve Assembly (SP214) 3" Bore
S601	Sliding Sleeve Assembly (SP111)
S620	Sliding Sleeve Assembly (SP114)
S634	Sliding Sleeve Assembly (SP211)
S641	Sliding Sleeve Assembly (SPE114)
S651	Sliding Sleeve Assembly (SPE111)
S672	Sliding Sleeve Assembly (SPE214, SPE314)
S697	Sliding Sleeve Assembly (SP214, SP314) Ball Bearing Style
S670	Sliding Sleeve Assembly (SP111) Ball Bearing Style
S704	Sliding Sleeve Assembly (SPE211)

Brass Collars

X117	Brass Collar Assembly (SP111)
X117B14	Brass Collar Assembly (SP114, SP214, SP314)
X117C10	Brass Collar Assembly (SP211)
X117C8	Brass Collar Assembly (C106, C107, C108, C110)

Yokes

X1037	Yoke (C106, C107, C108, C110)
X125A	Yoke (SP111)
X3507	Yoke (SP211)
X5091	Yoke (SP114, SP214, SP314)
XA6710	Yoke (SPE114)
XA6822	Yoke (SPE214, SPE314)

GILLETTE LOCATION 100 N HIGHWAY 14-16 PO BOX 3200 GILLETTE, WY 82716 P: (307) 682-5262 F: (307) 682-2240	OKLAHOMA LOCATION 1021 NE 29 TH ST OKLAHOMA CITY, OK 73129 P: (405) 602-6927 F: (405) 602-6933	TIMCOSERVICE.COM INFO@TIMCOSERVICE.COM TOLL FREE: (800) 688-4620	66
--	--	---	-----------

Pilot Bearings

M141A	Pilot Bearing, 1pc
M163A	Pilot Bearing
M167	Pilot Bearing
M224A	Pilot Bearing, 1pc
M1985A	Pilot Bearing
M2262A	Pilot Bearing, 1pc
M2467T	Pilot Bearing, 2pc
M2529T	Pilot Bearing, 2pc
M2713T	Pilot Bearing, 2pc
WTD-10-055	A62 Pilot Bearing, Sealed, Double Row, 72mm

Main Bearings

M1590	Main Bearing Set (C106DB, C107DB, C108)
M177	Main Bearing Set (C106, C107)
M207	Main Bearing Set (C110, SP111)
M214	Main Bearing Set (SP214, SP314)
M215	Main Bearing Set (SP214, SP314, SPE214, SPE314)
M2196	Main Bearing Set (SP211, SPE211)
M282	Main Bearing Set (SPE114, SPE114)

Miscellaneous Parts

1086	Shaft Nut (SP114, SPE114)
1092	Shaft Nut (SP111)
1092A	Shaft Nut (C108, C110)
1242	Stop Collar (SPE211, SPE114, SPE214, SPE314)
1442	Shaft Nut (SP314, SPE314)
1822	Level Roller Pin
2727	Shaft Nut (C106, C107)
A1587	Lock Washer (C106, C107)
A1588	Lock Washer (C108, C110, SP111)

GILLETTE LOCATION 100 N HIGHWAY 14-16 PO BOX 3200 GILLETTE, WY 82716 P: (307) 682-5262 F: (307) 682-2240	OKLAHOMA LOCATION 1021 NE 29 TH ST OKLAHOMA CITY, OK 73129 P: (405) 602-6927 F: (405) 602-6933	TIMCOSERVICE.COM INFO@TIMCOSERVICE.COM TOLL FREE: (800) 688-4620	67
--	--	--	-----------

A1589	Lock Washer (SP114, SPE114)
A1590	Shaft Washer (SP314, SPE314)
A1663	Grease Hose Assembly (C106, C107, C108C, C110C SP111)
A1663A	Grease Hose Assembly (SP211, SP114, SP214, SP314)
A211	Adjusting Yoke Assembly
A2701BD	Adjusting Lock Pin Spring (SP111, SP211, SPE211)
A2702BE	Adjusting Lock Pin Spring (SP/SPE 114, 214, 314)
B1509B	Shaft Nut (SP211, SPE211)
B1509T	Shaft Nut (SP214, SPE214)
B1511E	Lock Washer (SP211, SPE211)
B1511L	Lock Washer (SP214, SPE214)
M2115C	Spring Washer (SP111, SP211, SPE211)
M2115D	Spring Washer (SP/SPE 114, 214, 314)
M2241	7/8" Cam Roll
M2292	3/4" Cam Roll
X3799	Hand Lever (C106, C107, C108, C110, SP111, SP/SPE211)
X7441T	Hand Lever (SP/SPE 114, 214, 314)
XA5270	Yoke 218-B
XA5486	Yoke (WTD-18-012)
WTD-14-051	Collar, Ball Bearing, TD Style, SP311/14 Mechanical PTO
WTD-14-B46	Spherical Bearing 114 Pilotless Outboard

<u>GILLETTE LOCATION</u> 100 N HIGHWAY 14-16 PO BOX 3200 GILLETTE, WY 82716 P: (307) 682-5262 F: (307) 682-2240	<u>OKLAHOMA LOCATION</u> 1021 NE 29 TH ST OKLAHOMA CITY, OK 73129 P: (405) 602-6927 F: (405) 602-6933	<u>TIMCOSERVICE.COM</u> INFO@TIMCOSERVICE.COM TOLL FREE: (800) 688-4620	68
--	--	---	-----------

C106 Parts

Qty.	Part Number	Description
1	1382	Adj. Lock Pin Spring
1	1965	Inspection Plate
1	2042	Adjusting Lock Pin
1	2727	Shaft Nut
1	2757	Operating Shaft
1	6939	106 Drive Ring
1	7958	SAE #5 Housing
1	A16	Adjusting Yoke Assy
1	A1587	Shaft Lock Washer
1	A1663	Grease Hose, 12"
6	A2286	Release Spring
1	A-3507-S	6" Clutch Plate, 3 pc
1	M141A	Pilot Bearing
1	M177	Main Bearing
2	M2022Z	Woodruff Key
1	M2027AN	Jam Nut
1	M2046AF	Lock Washer
1	S387	Sliding Sleeve Assy
1	X117C8	Brass Collar Assembly
1	X1037	Yoke
1	X3799	Hand Lever
1	XA3026	Drilled Shaft, 1-7/16"
1	XA3026AN	Drilled Shaft, 1-3/4"

CLUTCHES

GILLETTE LOCATION 100 N HIGHWAY 14-16 PO BOX 3200 GILLETTE, WY 82716 P: (307) 682-5262 F: (307) 682-2240	OKLAHOMA LOCATION 1021 NE 29 TH ST OKLAHOMA CITY, OK 73129 P: (405) 602-6927 F: (405) 602-6933	TIMCOSERVICE.COM INFO@TIMCOSERVICE.COM TOLL FREE: (800) 688-4620	69
--	--	---	-----------

C106 Double Bearing Parts

Qty.	Part Number	Description
1	1216	Bearing Retainer Lock
1	1382	Adj. Lock Pin Spring
1	1965	Inspection Plate
1	2042	Adjusting Lock Pin
1	2727	Shaft Nut
1	2757	Operating Shaft
1	6939	106 Drive Ring
1	7X-333	Solid Shaft, 1-7/16"
1	7X-334	Sold Shaft, 1-3/4"
1	7X-334A	Drilled Shaft, 1-3/4"
1	A16	Adjusting Yoke Assy
1	A1587	Shaft Lock Washer
1	A1663	Grease Hose, 12"
6	A2286	Release Spring
1	A-3507-S	6" Clutch Plate, 3 pc
1	M141A	Pilot Bearing
2	M1590	Main Bearing
2	M2022Z	Woodruff Key
1	M2027AN	Jam Nut
1	M2046AF	Lock Washer
1	S387	Sliding Sleeve Assy
1	X117C8	Brass Collar Assembly
1	X1037	Yoke
1	X3799	Hand Lever
1	XA3026DB	Drilled Shaft, 4-7/16"

GILLETTE LOCATION 100 N HIGHWAY 14-16 PO BOX 3200 GILLETTE, WY 82716 P: (307) 682-5262 F: (307) 682-2240	OKLAHOMA LOCATION 1021 NE 29 TH ST OKLAHOMA CITY, OK 73129 P: (405) 602-6927 F: (405) 602-6933	TIMCOSERVICE.COM INFO@TIMCOSERVICE.COM TOLL FREE: (800) 688-4620	70
--	--	---	-----------

C107 Parts

Qty.	Part Number	Description
1	1382	Adj. Lock Pin Spring
1	1965	Inspection Plate
1	2042	Adjusting Lock Pin
1	2727	Shaft Nut
1	2757	Operating Shaft
1	6661	107 Drive Ring
1	7958	SAE #5 Housing
1	A16	Adjusting Yoke Assy
1	A1002	Snap Ring
1	A1587	Shaft Lock Washer
1	A1663	Grease Hose, 12"
6	A2286	Release Spring
1	A3087	Floating Plate
1	A3088	Hub & Back Plate
1	A-5436	7" Clutch Plate, 1 pc
1	A-5436-A	7" Clutch Plate, 2 pc
1	A-5436-S	7" Clutch Plate, 3 pc
1	M141A	Pilot Bearing
1	M177	Main Bearing
2	M2022Z	Woodruff Key
1	M2027AN	Jam Nut
1	M2046AF	Lock Washer
1	S387	Sliding Sleeve Assy
1	X117C8	Brass Collar Assembly
1	X1037	Yoke
1	X3799	Hand Lever
1	XA3026	Drilled Shaft, 1-7/16"
1	XA3026AN	Drilled Shaft, 1-3/4"

CLUTCHES

GILLETTE LOCATION 100 N HIGHWAY 14-16 PO BOX 3200 GILLETTE, WY 82716 P: (307) 682-5262 F: (307) 682-2240	OKLAHOMA LOCATION 1021 NE 29 TH ST OKLAHOMA CITY, OK 73129 P: (405) 602-6927 F: (405) 602-6933	TIMCOSERVICE.COM INFO@TIMCOSERVICE.COM TOLL FREE: (800) 688-4620	71
--	--	---	-----------

C107 Double Bearing Parts

Qty.	Part Number	Description
1	1216	Bearing Retainer Lock
1	1382	Adj. Lock Pin Spring
1	1965	Inspection Plate
1	2042	Adjusting Lock Pin
1	2727	Shaft Nut
1	2757	Operating Shaft
1	6661	107 Drive Ring
1	7X-333	Solid Shaft, 1-7/16"
1	7X-334	Solid Shaft, 1-3/4"
1	7X-334A	Drilled Shaft, 1-3/4"
1	A16	Adjusting Yoke Assy
1	A1587	Shaft Lock Washer
1	A1663	Grease Hose, 12"
6	A2286	Release Spring
1	A3087	Floating Plate
1	A3088	Hub & Back Plate
1	A-5436	7" Clutch Plate, 1 pc
1	A-5436-A	7" Clutch Plate, 2 pc
1	A-5436-S	7" Clutch Plate, 3 pc
1	M141A	Pilot Bearing
2	M1590	Main Bearing
2	M2022Z	Woodruff Key
1	M2027AN	Jam Nut
1	M2046AF	Lock Washer
1	S387	Sliding Sleeve Assy
1	X117C8	Brass Collar Assembly
1	X1037	Yoke
1	X3799	Hand Lever
1	XA3026DB	Drilled Shaft, 4-7/16"

GILLETTE LOCATION 100 N HIGHWAY 14-16 PO BOX 3200 GILLETTE, WY 82716 P: (307) 682-5262 F: (307) 682-2240	OKLAHOMA LOCATION 1021 NE 29 TH ST OKLAHOMA CITY, OK 73129 P: (405) 602-6927 F: (405) 602-6933	TIMCOSERVICE.COM INFO@TIMCOSERVICE.COM TOLL FREE: (800) 688-4620	72
--	--	---	-----------

C108 Parts

Qty.	Part Number	Description
4	103F	Lever
1	115	Adj. Lock Pin Spring
1	1092A	Shaft Nut
1	1144F	Operating Shaft
6	1473	Release Spring
1	1990	Adjusting Yoke
1	2245	Adjusting Lock Pin
1	2757	Operating Shaft (#4, #5 housings)
1	2815	Inspection Plate
1	5805A	108 Drive Ring
1	6479-S	8" Clutch Plate, 3pc
1	A60	Adjusting Yoke Assy
1	A1588	Lock Washer
1	A1663	Grease Hose, 12"
1	A1983	Bearing Retainer Lock
1	A3826	Clutch Shaft, Drilled
4	B1535C	Cotter Pin
4	M1538D	Lever Pin
1	M163A	Pilot Bearing
2	3M1590	Main Bearing
2	M2022Z	Woodruff Key
1	M2027AN	Jam Nut
1	M2032Z	Hub Key
1	M2046AF	Lock Washer
1	S384	Sliding Sleeve Assy
1	X117C8	Brass Collar Assembly
1	X1037	Yoke
1	X3799	Hand Lever

CLUTCHES

GILLETTE LOCATION 100 N HIGHWAY 14-16 PO BOX 3200 GILLETTE, WY 82716 P: (307) 682-5262 F: (307) 682-2240	OKLAHOMA LOCATION 1021 NE 29 TH ST OKLAHOMA CITY, OK 73129 P: (405) 602-6927 F: (405) 602-6933	TIMCOSERVICE.COM INFO@TIMCOSERVICE.COM TOLL FREE: (800) 688-4620	73
--	--	---	-----------

C110 Parts

Qty.	Part Number	Description
4	103F	Lever
1	115	Adj. Lock Pin Spring
1	1092A	Shaft Nut
1	1144F	Operating Shaft
1	1216	Bearing Retainer Lock
1	2245	Adjusting Lock Pin
1	2815	Inspection Plate
1	4879	Clutch Shaft, Drilled
1	4879AU	Clutch Shaft, Solid
1	5752	Floating Plate
1	5878	10" Clutch Plate, 1pc
1	5878-D	10" Clutch Plate, 2pc
1	5878-S	10" Clutch Plate, 3pc
1	6030	Hub and Back Plate
1	6187E	110 Drive Ring
1	8255	Housing, SAE #3
1	8879	Housing, SAE #4
1	A60	Adjusting Yoke Assy
6	A1069	Release Spring
1	A1588	Lock Washer
1	A1663	Grease Hose, 12"
4	B1535C	Cotter Pin
4	B1538D	Lever Pin
1	B2147	Bearing Retainer
2	M207	Main Bearing
1	M224A	Pilot Bearing, 1pc
2	M2022Z	Woodruff Key
1	M2027AN	Jam Nut
1	M2032Z	Hub Key
1	M2046AF	Lock Washer
1	M2467T	Pilot Bearing, 2pc
1	S384	Sliding Sleeve Assy
1	X117C8	Brass Collar Assembly
1	X1037	Yoke
1	X3799	Hand Lever

GILLETTE LOCATION
 100 N HIGHWAY 14-16
 PO BOX 3200
 GILLETTE, WY 82716
 P: (307) 682-5262
 F: (307) 682-2240

OKLAHOMA LOCATION
 1021 NE 29TH ST
 OKLAHOMA CITY, OK 73129
 P: (405) 602-6927
 F: (405) 602-6933

TIMCOSERVICE.COM
 INFO@TIMCOSERVICE.COM
 TOLL FREE: (800) 688-4620

SP111 Parts

Qty.	Part Number	Description
1	1092	Shaft Nut
1	1144E	Operating Shaft
1	1216	Bearing Retainer Lock
1	2815	Inspection Plate
1	6625D	111 Drive Ring
1	8252	Housing, SAE #3
1	A1588	Lock Washer
1	A1663	Grease Hose, 12"
1	A2701BD	Adj. Lock Pin Spring
1	A4238	Adjusting Ring
1	A5188	Clutch Shaft, Drilled
1	A5188AZ	Clutch Shaft, Solid
1	A6506B	Floating Plate
1	A-5579	11" Clutch Plate, 1pc
1	A-5579-A	11" Clutch Plate, 3 pc
3	B1304	Lever
3	B1535C	Cotter Pin
3	B1538A	Lever Pin
1	B2147	Bearing Retainer
1	B2340	Adjusting Lock Pin
2	M207	Main Bearing
1	M224A	Pilot bearing, 1 pc
2	M2022Z	Woodruff Key
1	M2027AN	Jam Nut
1	M2033BJ	Key
1	M2046AF	Lock Washer
6	M2115C	Spring Washer
1	S601	Sliding Sleeve Assy
1	X117	Brass Collar Assembly
1	X125A	Yoke
1	X3799	Hand Lever
1	ZA6505A	Hub and Back Plate

GILLETTE LOCATION 100 N HIGHWAY 14-16 PO BOX 3200 GILLETTE, WY 82716 P: (307) 682-5262 F: (307) 682-2240	OKLAHOMA LOCATION 1021 NE 29 TH ST OKLAHOMA CITY, OK 73129 P: (405) 602-6927 F: (405) 602-6933	TIMCOSERVICE.COM INFO@TIMCOSERVICE.COM TOLL FREE: (800) 688-4620	75
--	--	---	-----------

SP211 Parts

Qty.	Part Number	Description
1	1144E	Operating Shaft
1	1216	Bearing Retainer Lock
1	2815	Inspection Plate
2	6931T	211 Drive Ring
2	A1663A	Grease Hose, 16"
1	A2701BD	Adj. Lock Pin Spring
1	A4238	Adjusting Ring
1	A-5579	11" Clutch Plate, 1 pc
1	A-5579-A	11" Clutch Plate, 3 pc
1	A6506B	Floating Plate
1	A6690	Carrier Plate
1	A6691	Clutch Shaft, Drilled
1	A6691AC	Clutch Shaft, Solid
3	B1304	Lever
1	B1509B	Shaft Nut
1	B1511E	Lock Washer
3	B1535C	Cotter Pin
3	B1538A	Lever Pin
1	B2340	Adjusting Lock Pin
1	M224A	Pilot Bearing, 1 pc
2	M2022Z	Woodruff Key
1	M2027AN	Jam Nut
1	M2033BJ	Key
1	M2033X	Hub Key
1	M2046AF	Lock Washer
6	M2115C	Spring Washer
2	M2196	Main Bearing
1	M2467T	Pilot Bearing, 2 pc
1	S634	Sliding Sleeve Assembly
1	X117C10	Brass Collar Assembly
1	X3507	Yoke
1	X3799	Hand Lever

GILLETTE LOCATION 100 N HIGHWAY 14-16 PO BOX 3200 GILLETTE, WY 82716 P: (307) 682-5262 F: (307) 682-2240	OKLAHOMA LOCATION 1021 NE 29 TH ST OKLAHOMA CITY, OK 73129 P: (405) 602-6927 F: (405) 602-6933	TIMCOSERVICE.COM INFO@TIMCOSERVICE.COM TOLL FREE: (800) 688-4620	76
--	--	---	-----------

SPE211 Parts

Qty.	Part Number	Description
1	1144AK	Operating Shaft (#1 Housing)
1	1216	Bearing Retainer Lock
2	1242	Stop Collar
1	2815	Inspection Plate
1	6931T	211 Drive Ring
1	A2701BD	Adj. Lock Pin Spring
1	A4238	Adjusting Ring
1	A-5579	11" Clutch Plate, 1 pc
1	A-5579-A	11" Clutch Plate, 3 pc
1	A6506B	Floating Plate
1	A6690	Carrier Plate
1	A6691	Clutch Shaft, Drilled
1	A6691AC	Clutch Shaft, Solid
1	B1297D	Headed Pin
3	B1304	Lever
1	B1509B	Shaft Nut
1	B1511E	Lock Washer
3	B1535C	Cotter Pin
3	B1538A	Lever Pin
1	B2340	Adjusting Lock Pin
2	M2022Z	Woodruff Key
1	M2033BJ	Key
1	M2033X	Hub Key
6	M2115C	Spring Washer
2	M2196	Main Bearing
2	M2292	3/4" Cam Roll Bearing
1	M2467T	Pilot Bearing, 2 pc
1	S704	Sliding Sleeve Assembly
1	X3799	Hand Lever
1	XA4440A	Locator Assembly
1	XB3001	Yoke

CLUTCHES

GILLETTE LOCATION 100 N HIGHWAY 14-16 PO BOX 3200 GILLETTE, WY 82716 P: (307) 682-5262 F: (307) 682-2240	OKLAHOMA LOCATION 1021 NE 29 TH ST OKLAHOMA CITY, OK 73129 P: (405) 602-6927 F: (405) 602-6933	TIMCOSERVICE.COM INFO@TIMCOSERVICE.COM TOLL FREE: (800) 688-4620	77
--	--	---	-----------

SP114 Parts

Qty.	Part Number	Description
1	1086	Shaft Nut
1	1094C	Operating Shaft
1	2815	Inspection Plate
1	5659-K	14" Clutch Plate, 1 pc
1	5659-L	14" Clutch Plate, 3 pc
1	5712B	114 Drive Ring
1	8424	Housing, SAE #1
1	A1589	Lock Washer
1	A1663A	Grease Hose, 16"
1	A1983	Bearing Retainer Lock
1	A2622F	Snap Ring (Shaft)
1	A2702BE	Adjusting Lock Pin Spring
1	A4241	Adjusting Ring
1	A5190	Clutch Shaft, Drilled
1	A5190AO	Clutch Shaft, Solid
1	A6512C	Floating Plate
4	B1284	Lever
4	B1535D	Cotter Pin
4	B1540A	Lever Pin
1	B2341	Adjusting Lock Pin Spring
2	M282	Main Bearing
1	M1985	Pilot Bearing, 1 pc
2	M2022Z	Woodruff Key
1	M2027AN	Jam Nut
1	M2035AB	Hub Key
1	M2046AF	Lock Washer
1	M2046L	Lock Washer
8	M2115D	Spring Washer
1	M2529T	Pilot Bearing, 2 pc
1	S620	Brass Collar Assembly
1	X117B14	Brass Collar Assembly
1	X5091	Yoke
1	X7441T	Hand Lever
3	ZA6620A	Hub and Back Plate

CLUTCHES

GILLETTE LOCATION 100 N HIGHWAY 14-16 PO BOX 3200 GILLETTE, WY 82716 P: (307) 682-5262 F: (307) 682-2240	OKLAHOMA LOCATION 1021 NE 29 TH ST OKLAHOMA CITY, OK 73129 P: (405) 602-6927 F: (405) 602-6933	TIMCOSERVICE.COM INFO@TIMCOSERVICE.COM TOLL FREE: (800) 688-4620	78
--	--	---	-----------

SPE114 Parts

Qty.	Part Number	Description
1	1086	Operating Shaft (#1 Housing)
1	1144Z	Bearing Retainer Lock
2	1242	Stop Collar
1	2815	Inspection Plate
1	5659-K	14" Clutch Plate, 1 pc
1	5659-L	14" Clutch Plate, 3 pc
1	5712B	Drive Ring
1	8424	11" Clutch Plate, 1 pc
1	A1589	11" Clutch Plate, 3 pc
1	A1983	Floating Plate
1	A2622F	Carrier Plate
1	A2702BE	Clutch Shaft, Drilled
1	A4241	Clutch Shaft, Solid
1	A4441	Headed Pin
3	A5190	Lever
1	A5190AO	Shaft Nut
1	A6512C	Lock Washer
4	B1284	Cotter Pin
4	B1535D	Lever Pin
4	B1540A	Adjusting Lock Pin
1	B2341	Woodruff Key
2	M282	Key
2	M2022Z	Hub Key
1	M2035AB	Spring Washer
1	M2046L	Main Bearing
8	M2115D	3/4" Cam Roll Bearing
2	M2241	Pilot Bearing, 2 pc
1	M2529T	Sliding Sleeve Assembly
1	S641	Hand Lever
1	X7441T	Locator Assembly
1	XA4440A	Yoke
1	XA6710	Yoke
1	ZA6620A	Yoke

CLUTCHES

GILLETTE LOCATION 100 N HIGHWAY 14-16 PO BOX 3200 GILLETTE, WY 82716 P: (307) 682-5262 F: (307) 682-2240	OKLAHOMA LOCATION 1021 NE 29 TH ST OKLAHOMA CITY, OK 73129 P: (405) 602-6927 F: (405) 602-6933	TIMCOSERVICE.COM INFO@TIMCOSERVICE.COM TOLL FREE: (800) 688-4620	79
--	--	---	-----------

SP214 Parts

Qty.	Part Number	Description
1	1094C	Operating Shaft (#1 Housing)
1	1580A	Operating Shaft (#0 Housing)
1	2815	Inspection Plate
2	5659-K	14" Clutch Plate, 1 pc
2	5659-L	14" Clutch Plate, 3 pc
1	5713D	214 Drive Ring
1	A1663A	Grease Hose, 16"
1	A1983	Bearing Retainer Lock
1	A2702BE	Adj. Lock Pin Spring
1	A4241	Adjusting Ring
1	A5195	Carrier Bearing Housing
1	A6512C	Floating Plate
1	A6513	Carrier Plate
4	B1284	Lever
1	B1509T	Shaft Nut
1	B1511L	Lock Washer
4	B1535D	Cotter Pin
4	B1540A	Lever Pin
1	B2341	Adjusting Lock Pin
1	B5027A	Clutch Shaft, Solid
2	M215	Main Bearing
2	M2022Z	Woodruff Key
1	M2027AN	Jam Nut
1	M2035AC	Hub Key
1	M2046AF	Lock Washer
8	M2115D	Spring Washer
1	M2529T	Pilot Bearing, 2 pc
1	S598	Sliding Sleeve Assembly
1	X117B14	Brass Collar Assembly
1	X5091	Yoke
1	X7441T	Hand Lever
1	ZA6519E	Hub & Back Plate

CLUTCHES

GILLETTE LOCATION 100 N HIGHWAY 14-16 PO BOX 3200 GILLETTE, WY 82716 P: (307) 682-5262 F: (307) 682-2240	OKLAHOMA LOCATION 1021 NE 29 TH ST OKLAHOMA CITY, OK 73129 P: (405) 602-6927 F: (405) 602-6933	TIMCOSERVICE.COM INFO@TIMCOSERVICE.COM TOLL FREE: (800) 688-4620	80
--	--	---	-----------

SPE214 Parts

Qty.	Part Number	Description
1	1144X	Operating Shaft (#0 Housing)
1	1144Z	Operating Shaft (#1 Housing)
2	1242	Stop Collar
1	2815	Inspection Plate
2	5659-K	14" Clutch Plate, 1pc
2	5659-L	14" Clutch Plate, 3pc
1	5713D	214 Drive Ring
1	A1983	Bearing Retainer Lock
1	A2702BE	Adj. Lock Pin Spring
1	A4241	Adjusting Ring
1	A5195	Carrier Bearing Housing
1	A6512C	Floating Plate
1	A6513	Carrier Plate
4	B1284	Lever
1	B1509T	Shaft Nut
1	B1511L	Lock Washer
4	B1535D	Cotter Pin
4	B1284	Lever
1	B2341	Adjusting Lock Pin
1	B5027A	Clutch Shaft, Solid
2	M215	Main Bearing
2	M2022Z	Woodruff Key
1	M2035AC	Hub Key
8	M2115D	Spring Washer
2	M2241	7/8" Cam Roll Bearing
1	M2529T	Pilot Bearing, 2 pc
1	S672	Sliding Sleeve Assembly
1	X7441T	Hand Lever
1	XA4440A	Locator Assembly
1	XA6822	Yoke
1	ZA6519E	Hub & Back Plate

CLUTCHES

GILLETTE LOCATION 100 N HIGHWAY 14-16 PO BOX 3200 GILLETTE, WY 82716 P: (307) 682-5262 F: (307) 682-2240	OKLAHOMA LOCATION 1021 NE 29 TH ST OKLAHOMA CITY, OK 73129 P: (405) 602-6927 F: (405) 602-6933	TIMCOSERVICE.COM INFO@TIMCOSERVICE.COM TOLL FREE: (800) 688-4620	81
--	--	---	-----------

SP314 Parts

Qty.	Part Number	Description
1	1094C	Operating Shaft (#0 Housing)
1	1442	Shaft Nut
1	1580A	Operating Shaft (#1 Housing)
1	2815	Inspection Plate
3	5659-K	14" Clutch Plate, 1pc
3	5659-L	14" Clutch Plate, 3pc
1	A1590	Shaft Washer
1	A1663A	Grease Hose, 16"
1	A1983	Bearing Retainer Lock
1	A2702BE	Adjusting Lock Pin Spring
1	A4241	Adjusting Ring
1	A5194	Carrier Bearing Housing
1	A6512C	Floating Plate
2	A6513	Carrier Plate
1	A6518A	314 Drive Ring
1	A6619K	Clutch Shaft, Solid
4	B1284	Lever
4	B1535D	Cotter Pin
4	B1540A	Lever Pin
1	B2341	Adjusting Lock Pin
2	M215	Main Bearing
2	M2022Z	Woodruff Key
1	M2027AN	Jam Nut
1	M2033BK	Hub Key
1	M2046AF	Lock Washer
8	M2115D	Spring Washer
1	M2713T	Pilot Bearing, 2 pc
1	S598	Sliding Sleeve Assembly
1	X117B14	Brass Collar Assembly
1	X5091	Yoke
1	X7441T	Hand Lever
1	ZA6511A	Hub & Back Plate

GILLETTE LOCATION 100 N HIGHWAY 14-16 PO BOX 3200 GILLETTE, WY 82716 P: (307) 682-5262 F: (307) 682-2240	OKLAHOMA LOCATION 1021 NE 29 TH ST OKLAHOMA CITY, OK 73129 P: (405) 602-6927 F: (405) 602-6933	TIMCOSERVICE.COM INFO@TIMCOSERVICE.COM TOLL FREE: (800) 688-4620	82
--	--	---	-----------

SPE314 Parts

Qty.	Part Number	Description
1	1144X	Operating Shaft (#0 Housing)
1	1144Z	Operating Shaft (#1 Housing)
2	1242	Stop Collar
1	1442	Shaft Nut
1	2815	Inspection Plate
2	5659-K	14" Clutch Plate, 1pc
1	5659-L	14" Clutch Plate, 3pc
1	A1590	Shaft Washer
1	A1983	Bearing Retainer Lock
1	A2702BE	Adjusting Lock Pin Spring
1	A4241	Adjusting Ring
1	A5194	Carrier Bearing Housing
1	A6512C	Floating Plate
4	A6513	Center Plate
1	A6518A	314 Drive Ring
1	A6619K	Clutch Shaft, Solid
4	B1284	Lever
4	B1535D	Cotter Pin
4	B1540A	Lever Pin
1	B2341	Adjusting Lock Pin
1	M215	Main Bearing
2	M2022Z	Woodruff Key
2	M2115D	Spring Washer
1	M2241	7/8" Cam Roll Bearing
8	M2713T	Pilot Bearing, 2 pc
2	S672	Sliding Sleeve Assembly
1	X7441T	Hand Lever
1	XA4440A	Locator Assembly
1	XA6822	Yoke
1	ZA6511A	Hub & Back Plate

CLUTCHES

GILLETTE LOCATION 100 N HIGHWAY 14-16 PO BOX 3200 GILLETTE, WY 82716 P: (307) 682-5262 F: (307) 682-2240	OKLAHOMA LOCATION 1021 NE 29 TH ST OKLAHOMA CITY, OK 73129 P: (405) 602-6927 F: (405) 602-6933	TIMCOSERVICE.COM INFO@TIMCOSERVICE.COM TOLL FREE: (800) 688-4620	83
--	--	---	-----------



Miscellaneous

Ignition -Lufkin – Gemini – Ford – Waukesha - Witte

Ignition Parts

101-065	Pick-Up Coil Assembly
101-076	Magnet Bar 8 1/4
101-092	Pick-Up Coil Assembly
1187	Ignition Coil (501-061)
181-001-X	1 Cylinder Electronic Box
260D-8810	Generator
400A-8811	Trigger Bar
400A-8813	Charging Bar
400A8814	Module Box
FM601-66/96	Ignition System

Witte Engine Parts

CAST-E-15	E-15/E-20 Carburetor Bracket
CAST-F-42	F-42 Carburetor Bracket
TK-E15	E-15/E-20 Carburetor Kit
TRS-E15-STD	E-15 Piston Ring Set
TRS-E20-STD	E-20 Piston Ring Set
TRS-F42-STD	F-42 Piston Ring Set
VG-E15/E20	Intake/Exhaust Valve Guide
47200822	RC98 Head Gasket
47200844	RC98 Valve cover Gasket

Lufkin Engine Parts

238-795-GHD	Lufkin 795 Head Gasket, Heavy Duty
860-LC-795	Lufkin 795 Rod Packing (Takes 2 per engine)
TRS-795	Lufkin 795 Piston Ring Set (10 rings)

<p><u>GILLETTE LOCATION</u> 100 N HIGHWAY 14-16 PO BOX 3200 GILLETTE, WY 82716 P: (307) 682-5262 F: (307) 682-2240</p>	<p><u>OKLAHOMA LOCATION</u> 1021 NE 29TH ST OKLAHOMA CITY, OK 73129 P: (405) 602-6927 F: (405) 602-6933</p>	<p><u>TIMCOSERVICE.COM</u> INFO@TIMCOSERVICE.COM TOLL FREE: (800) 688-4620</p>	<p>85</p>
---	--	--	------------------

Ford Governor

BD540B	Ford Governor Assembly
BD540B-TRK	Ford Governor Repair Kit, BD540B
BD540J-TRK	Ford Governor Repair Kit, BD540J

Gemini G26

400-354	G26 Valve Adjusting Screw
405-4685	Governor Seal
GD751A	G26 Gemini Governor Assembly
G26 HEAD KIT	G26 Cylinder Head Repair Kit
310-355	G26 Valve Cover Gasket

Waukesha

208615	Valve Cover Gasket 330
73810F	F-1197 Valve Cover Gasket
A76423C	Valve Cover Gasket 145/F817
A76455	Gasket Water Manifold
TK-1197	F-1197 Ignition Adapter Kit, with Zinc Hub
TK-1197-S	F-1197 Ignition Adapter Kit, with Steel Hub
TK-1197-1	Ignition Adapter Housing
TK-1197-2	Ignition Adapter Hub, Zinc
TK-1197-2-S	Ignition Adapter Hub, Steel
TK-1905	F-1905 Ignition Adapter Kit, with Zinc Hub
TK-1905-S	F-1905 Ignition Adapter Kit, with Steel Hub
TK-1905-3	Ignition Adapter Spacer

GILLETTE LOCATION 100 N HIGHWAY 14-16 PO BOX 3200 GILLETTE, WY 82716 P: (307) 682-5262 F: (307) 682-2240	OKLAHOMA LOCATION 1021 NE 29 TH ST OKLAHOMA CITY, OK 73129 P: (405) 602-6927 F: (405) 602-6933	TIMCOSERVICE.COM INFO@TIMCOSERVICE.COM TOLL FREE: (800) 688-4620	86
--	--	---	-----------



Gaskets

Ajax

150-4F	4" Full Face Pipe Gasket
A-1181	Exhaust Flange Gasket, 6"
A-1181-8	Exhaust Flange Gasket, 8"
A-1669-B	Cover Plate Gasket
A-1717	DP-60/80 Rear Cover Gasket
A-2227-A	Bearing Support Gasket
A-2233-T	DP80/115 Side Cover Gasket
A-2247-D	Spiral Gear Cover Gasket
A-2269	Layshaft Stand Gasket
A-2569	Water Connector Gasket
A-2588A	Mixer Box to Air Horn Gasket, DP-80/115
A-2588-A	Mixer Box to Air Horn Gasket, DP-80/115
A-2764-A	Bearing Support Cover Gasket
A-2781	Water Inlet Gasket, DP-115
A-2784	Throttle Valve Cover Gasket
A-2804-G	DP-80 Grafoil Head Gasket
A-2804-GHD	DP-80 Heavy Duty, Grafoil Head Gasket
A-2838-B	Lubrication Bracket Gasket
A-2839	Bearing Support Cover Gasket
A-2846-A	Gasket, Flat Round
A-2939	DP-80 Bearing Support Gasket
A-3126	Control Box Gasket
A-3131	Layshaft Gasket
A-3139	Cover Gasket
A-3167-A	Control Box Cover Oval Gasket
A-3172-A	Main Bearing Support Gasket, E42
A-3174-A	Cylinder to Bed Gasket, E-42
A-3175	Magneto Drive Gasket
A-3176	CMA Mixer Box Gasket
A-3177-A	Gasket Breather Plate
A-3178-A	Gasket-Side Cover FWS
A-3180	Gasket-Top Cylinder Cover Gasket
A-3181	Exhaust Flange Gasket, 4"

GILLETTE LOCATION 100 N HIGHWAY 14-16 PO BOX 3200 GILLETTE, WY 82716 P: (307) 682-5262 F: (307) 682-2240	OKLAHOMA LOCATION 1021 NE 29 TH ST OKLAHOMA CITY, OK 73129 P: (405) 602-6927 F: (405) 602-6933	TIMCOSERVICE.COM INFO@TIMCOSERVICE.COM TOLL FREE: (800) 688-4620	88
--	--	---	-----------

A-3183	Control Box Cover Gasket
A-3184-A	Cover Plate Gasket
A-3185	Gasket-Lubricator Bracket
A-3204-F	E-42 Grafoil Head Gasket
A-3204-GHD	E-42 Heavy Duty, Grafoil Head Gasket
A-3205	8-1/2 X 10 CMA 2 Piece Head Plate Gasket
A-3427	Air Cleaner to Air Horn Gasket
A-3465	Top Cylinder Gasket
A-3484-A	Spiral Gear Cover Plate Gasket, CMA
A-3650-F	EA-22 Grafoil Head Gasket
A-3650-GHD	EA-22 Heavy Duty, Grafoil Head Gasket
A-3672	Bearing Support Gasket
A-3676	Mixer Valve Gasket
A-3678	Layshaft Tube Flange Gasket
A-3680	Top Cylinder Cover Gasket
A-3719	Mixer Gasket
A-3720	Airhorn Gasket to Mixer Gasket
A-3750-F	EA-30 Grafoil Head Gasket
A-3750-GHD	EA-30 Heavy Duty, Grafoil Head Gasket
A-3752	Water Neck Gasket
A-3788	DP-81 Grafoil Head Gasket
A-3834-GHD	DP-60 Heavy Duty, Grafoil Head Gasket
A-3834-H	DP-60 Grafoil Head Gasket
A-3887	Exhaust Flange Gasket, 5"
A-3888-A	DP-60 Cylinder Gasket
A-3897	Side Cover Gasket, Clutch Side
A-3898	E-42/DP-60 Mixer Box Gasket
A-3899	Airhorn Gasket to Mixer Gasket
A-3954-F	WL Grafoil Head Gasket
A-4075-1	Fan Gasket
A-433-T	DP-115 Grafoil Head Gasket
BM-10022	Copper Fuel Injection Gasket
BM-10108-A	Layshaft Tube Seal
BM-10500	DP-80 Stuffing Box Gasket
BM-10501	EA-30 Stuffing Box Gasket
BM-10502	E-42/DP-60 Stuffing Box Gasket
B-1062	Clean Out Hole Gasket
K-6289	Crosshead Guide Gasket

<u>GILLETTE LOCATION</u> 100 N HIGHWAY 14-16 PO BOX 3200 GILLETTE, WY 82716 P: (307) 682-5262 F: (307) 682-2240	<u>OKLAHOMA LOCATION</u> 1021 NE 29 TH ST OKLAHOMA CITY, OK 73129 P: (405) 602-6927 F: (405) 602-6933	<u>TIMCOSERVICE.COM</u> INFO@TIMCOSERVICE.COM TOLL FREE: (800) 688-4620	89
--	--	---	-----------

M-1550-F	E-30 Grafoil Head Gasket
M-1550-GHD	E-30 Heavy Duty, Grafoil Head Gasket
M-2632	Governor Gasket 3 Bolt
M-2654	Gasket-Large Side Cover CS
M-2660-2	Water Connector Gasket
TGS-154	7-1/4 x 8 CMA/EA-30 Cylinder Change Gasket Set
TGS-156	8-1/2 x 10 CMA/E-42 Cylinder Change Gasket Set
TGS-157	DP-60 Cylinder Change Gasket Set
TGS-158	DP-80 Cylinder Change Gasket Set
TGS-6780-A	6-1/2 x 8 CMA-EA-22 Overhaul Gasket
TGS-6789-A-C	7-1/4 x 8 CMA/EA-30 Overhaul Gasket Set
TGS-6790-B	8-1/2 x 10 CMA/E-42 Overhaul Gasket Set
TGS-7043-A	DP-60 Overhaul Gasket Set
TGS-6979-C	DP-80 Overhaul Gasket Set

Arrow

173-46	C-46/66/96/106 Screen Cover Gasket
208-46	C-46/66/96 Governor Housing Gasket
208-106	C-106 Governor Housing Gasket
215-46	C-46/66/96/106 Governor Gasket
22-46	C-46/66 Rear Inspection Cover Gasket
22-96	C-96/106 Rear Inspection Cover Gasket
238-46	C-46 Head Gasket
238-46-GHD	C-46 Head Gasket, Heavy Duty Grafoil
238-66	C-66 Head Gasket
238-66-GHD	C-66 Head Gasket, Heavy Duty Grafoil
238-96	C-96 Head Gasket
238-96-GHD	C-96 Head Gasket, Heavy Duty Grafoil
238-106	C-106 Head Gasket
238-106-GHD	C-106 Head Gasket, Heavy Duty Grafoil
24-46	C-46 Top Crankcase Cover Gasket
24-66	C-66 Top Crankcase Cover Gasket
24-96	C-96/106 Top Crankcase Cover Gasket
246-46	C-46 Outer Valve Cover Gasket
246-66	C-66 Outer Valve Cover Gasket
246-96	C-96 Outer Valve Cover Gasket

GILLETTE LOCATION 100 N HIGHWAY 14-16 PO BOX 3200 GILLETTE, WY 82716 P: (307) 682-5262 F: (307) 682-2240	OKLAHOMA LOCATION 1021 NE 29 TH ST OKLAHOMA CITY, OK 73129 P: (405) 602-6927 F: (405) 602-6933	TIMCOSERVICE.COM INFO@TIMCOSERVICE.COM TOLL FREE: (800) 688-4620	90
--	--	---	-----------

246-106	C-106 Outer Valve Cover Gasket
246-A-106	C-106 Inner Valve Cover Gasket
289-46	C-46/66/96/106 Fuel Pump Cover Gasket
314-46	C-46/66/96/106 Water Filler Gasket
32-46	C-46/66 Compression Relief Cover Gasket
32-96	C-96/106 Compression Relief Cover Gasket
330-11-46	C-46/66/96/106 Magneto Bracket Gasket
330-17-46	C-46/66/96/106 Magneto Drive Gasket
336-46	C-46 Condenser Gasket
336-66	C-66/96 Condenser Gasket
336-106	C-106 Condenser Gasket
346-46	C-46/66/96/106 Gasket, Water Filler
347-46	C-46 Hopper to Block Gasket
347-66	C-66 Hopper to Block Gasket
347-96	C-96/106 Hopper to Block Gasket
35-46	C-46 Oil Level Gauge Gasket
498-T-1	C-46/66/96/106 Side Gasket
498-T-2	Fan Hub Gasket Large ID
8-46	Fan Hub Gasket Small ID
ACE-409-46NS	C-46/66/96/106 Gasket-Sediment Bowl
TGS-46	C-46 Overhaul Gasket Set
TGS-46-HD	C-46 Overhaul Gasket Set, Heavy Duty
TGS-66	C-66 Overhaul Gasket Set
TGS-66-HD	C-66 Overhaul Gasket Set, Heavy Duty
TGS-96	C-96 Overhaul Gasket Set
TGS-96-HD	C-96 Overhaul Gasket Set, Heavy Duty
TGS-106	C-106 Overhaul Gasket Set
TGS-106-HD	C-106 Overhaul Gasket Set, Heavy Duty
TVGS-46	C-46 Valve Grind Gasket Set
TVGS-46-HD	C-46 Valve Grind Gasket Set, Heavy Duty
TVGS-66	C-66 Valve Grind Gasket Set
TVGS-66-HD	C-66 Valve Grind Gasket Set, Heavy Duty
TVGS-96	C-96 Valve Grind Gasket Set
TVGS-96-HD	C-96 Valve Grind Gasket Set, Heavy Duty
TVGS-106	C-106 Valve Grind Gasket Set
TVGS-106-HD	C-106 Valve Grind Gasket Set, Heavy Duty

<u>GILLETTE LOCATION</u> 100 N HIGHWAY 14-16 PO BOX 3200 GILLETTE, WY 82716 P: (307) 682-5262 F: (307) 682-2240	<u>OKLAHOMA LOCATION</u> 1021 NE 29 TH ST OKLAHOMA CITY, OK 73129 P: (405) 602-6927 F: (405) 602-6933	<u>TIMCOSERVICE.COM</u> INFO@TIMCOSERVICE.COM TOLL FREE: (800) 688-4620	91
--	--	---	-----------

Fairbanks-Morse

1119-208	Radiator Hopper Hand Hole Cover Gasket (Small)
1119-A-208	Radiator Hopper Hand Hole Cover Gasket (Large)
1286-118	ZC-118 Crankcase Cover Gasket
1286-208	ZC-208 Crankcase Cover Gasket
1286-346	ZC-346 Crankcase Cover Gasket
1286-503	ZC-503 Crankcase Cover Gasket
1892-118	ZC-118 Base End Cover Gasket
1892-346	ZC-346 Base End Cover Gasket
1898-118	ZC-118 Governor Bearing Housing Gasket
1898-208	ZC-208 Governor Bearing Housing Gasket
1898-346	ZC-346 Governor Bearing Housing Gasket
1898-503	ZC-503 Governor Bearing Housing Gasket
1899-118	ZC-118 Governor Bearing Housing Gasket Opposite
1899-208	ZC-208 Governor Bearing Housing Gasket Opposite
1899-346	ZC-346 Governor Bearing Housing Gasket Opposite
1899-503	ZC-503 Governor Bearing Housing Gasket Opposite
190-118-GHD	ZC-118 Head Gasket, Heavy Duty Grafoil
190-208-GHD	ZC-208 Head Gasket, Heavy Duty Grafoil
190-346-GHD	ZC-346 Head Gasket, Heavy Duty Grafoil
190-503-GHD	ZC-503 Head Gasket, Heavy Duty Grafoil
190-739-GHD	ZC-739 Head Gasket, Heavy Duty Grafoil
191-118	ZC-118 Water Hopper Gasket
191-208	ZC-208 Water Hopper Gasket
191-346	ZC-346 Water Hopper Gasket
191-503	ZC-503 Water Hopper Gasket
192-346	ZC-346 Carburetor Gasket
192-739	ZC-739 Carburetor Gasket
193-346	ZC-346 Cylinder to Base Gasket
193-503	ZC-503 Cylinder to Base Gasket
194-346	ZC-346/503 Water Reservoir Gasket
2025-118	ZC-118/208 Magneto Gear Closure Gasket
2025-346	ZC-346/503 Magneto Gear Closure Gasket
2340-118	ZC-118/208 Governor Cover Gasket
237-118	ZC-118/208 Fuel Mixer Cover Gasket
237-346	ZC-346/503/739 Fuel Mixer Cover Gasket

<p><u>GILLETTE LOCATION</u> 100 N HIGHWAY 14-16 PO BOX 3200 GILLETTE, WY 82716 P: (307) 682-5262 F: (307) 682-2240</p>	<p><u>OKLAHOMA LOCATION</u> 1021 NE 29TH ST OKLAHOMA CITY, OK 73129 P: (405) 602-6927 F: (405) 602-6933</p>	<p><u>TIMCOSERVICE.COM</u> INFO@TIMCOSERVICE.COM TOLL FREE: (800) 688-4620</p>	<p>92</p>
---	--	--	------------------

247-118	ZC-118/208 Air Valve Gasket
249-118/208	Carburetor to Head Gasket
407-118	ZC-118 Cylinder Cover Bolt Gasket
407-346	ZC-346/503/739 Cylinder Cover Bolt Gasket
5914-118	ZC-118/208 Governor Housing Cover Gasket
5914-A-346	ZC-346/503/739 Governor Housing Cover Gasket
6147-118	ZC-118 Condenser Gasket
6147-208	ZC-208 Condenser Gasket
6147-346	ZC-346 Condenser Gasket
6147-503	ZC-503 Condenser Gasket
6147-739	ZC-739 Condenser Gasket
A-990-118	Cylinder to Base Oil Gauge Gasket
TGS-208	ZC-208 Overhaul Gasket Set
TGS-346	ZC-346 Overhaul Gasket Set
TGS-503	ZC-503 Overhaul Gasket Set

Turbo

189-0855	Turbo screen gasket
----------	---------------------

Lufkin

238-795-GHD	Head Gasket 795, Heavy Duty
-------------	-----------------------------

Gemini

310-355	G26 Valve Cover Gasket
---------	------------------------

IMPCO

G1-11	100/110 Gasket, Throttle Body to Mixer
G1-13	110 Gasket, Plate to Body
G1-18	Gasket, 1.25" SAE Flange

GILLETTE LOCATION 100 N HIGHWAY 14-16 PO BOX 3200 GILLETTE, WY 82716 P: (307) 682-5262 F: (307) 682-2240	OKLAHOMA LOCATION 1021 NE 29 TH ST OKLAHOMA CITY, OK 73129 P: (405) 602-6927 F: (405) 602-6933	TIMCOSERVICE.COM INFO@TIMCOSERVICE.COM TOLL FREE: (800) 688-4620	93
--	--	---	-----------

G1-19	Gasket, 1.50" SAE Flange
G1-20	210 Gasket, Plate to Body
G1-21	200/210 Gasket, Throttle Body to Mixer
G1-23	Gasket, 1.75" SAE Flange
G1-24	Gasket, 2" SAE Flange
G1-25	425 Gasket, Adapter to Throttle Body
G1-28	425 Gasket, 3" SAE Flange
G1-56	Gasket, AT2-16
G1-66	425 Gasket, Air Horn
G1-74	Mixer to Adapter Gasket

GASKETS

<p><u>GILLETTE LOCATION</u> 100 N HIGHWAY 14-16 PO BOX 3200 GILLETTE, WY 82716 P: (307) 682-5262 F: (307) 682-2240</p>	<p><u>OKLAHOMA LOCATION</u> 1021 NE 29TH ST OKLAHOMA CITY, OK 73129 P: (405) 602-6927 F: (405) 602-6933</p>	<p><u>TIMCOSERVICE.COM</u> INFO@TIMCOSERVICE.COM TOLL FREE: (800) 688-4620</p>	<p>94</p>
--	--	--	------------------