



# Engine Parts Book

*November 2022*

# TIMCO Parts Return Policy

**TIMCO stock items** must be returned within **30 days** of invoice date and to be a credited at 100% purchase price with no restocking fee, less inbound and outbound shipping costs. No returns after 30 days after invoice date.

**Special order items** must be returned within **10 business days** of invoice date will receive a refund at 65% of purchase price and if our vendor allows returns. Inbound, outbound and return freight cost; custom charges and vendor restocking charge, if applicable, will deducted from credit.

**The parts must be in their original packaging and in sellable condition.**

**TIMCO shipping errors or defective parts** must be returned within **10 business days** of invoice date. Inbound and outbound freight charge will be credited. Replacement parts will be invoiced, and a credit will be issued upon return. In most cases, TIMCO will issue a return label. Parts can also returned collect on TIMCO's preferred vendor.

It is at TIMCO discretion, whether the credit is refunded by check or account credit.

**Return authorization number is required for proper credit. Put RA # on outside of the box.**



# TABLE OF CONTENTS

<b>AJAX .....</b>	<b>7</b>
Carburetor Kits .....	8
Carburetor Parts.....	8
Head Gaskets .....	8
Gasket Sets.....	9
Miscellaneous Gaskets.....	9
Rod Packing.....	11
Piston Rings.....	11
Crosshead Pins & Bushings .....	11
Rod Bearing & Shims.....	12
Governor Kits & Parts.....	12
Lubricators & Lubricator Parts .....	12
Radiators .....	13
Safety Switches & Gauges.....	13
Water Pipes & Water Necks.....	14
Spark Plugs & Spark Plug Wires .....	14
Fan Belts & Belt Guards .....	14
Fans, Fan Repair Kits, and Fan Parts .....	15
Oil Lines.....	15
Starters & Repair Kits .....	15
Starter Parts .....	16
Jumper Cables (Custom length available upon request) .....	17
Overspeed Switch & Bolt Assemblies .....	17
Miscellaneous Ajax Parts .....	18
Hardware & Tools .....	19
Mag Drive Assembly & Repair Kit .....	19
Gasoline Flywheel Starter .....	19
Pilot Bearing Housings, Bearing, and Kits .....	20
Mufflers.....	20
Clutch Assemblies (Includes Drive Ring, Handle, and Pilot Bearing) .....	20
7-1/4 x 8 CMA, EA-30 Overhaul List.....	21
7-1/2 x 10 CMA, E-30 Overhaul List .....	22
8-1/2 x 10 CMA, E-42 Overhaul List.....	23
DP-60 Overhaul List.....	24
DP-80 Overhaul List.....	25
<b>Arrow Engine .....</b>	<b>26</b>
Carburetor Kits.....	27
Carburetor Related Parts .....	27

# TABLE OF CONTENTS

Head Gaskets .....	27
Gasket Sets.....	27
Miscellaneous Gaskets.....	28
Piston Assemblies .....	29
Piston Ring Sets.....	29
Wrist Pin & Bushing .....	29
Connecting Rod Bearing & Shims.....	29
Cylinder Sleeves & Gaskets.....	30
Cylinder Heads & Cylinder Head Repair Kits.....	30
Governor Repair Kit & Accessories .....	31
Rocker Arm Parts .....	31
Valves & Valve Covers.....	31
Valve Guides.....	32
Valve Seats .....	32
Spark Plug Wire Assemblies.....	32
Oil Pumps and Oil Pump Repair Kits .....	33
Oil Filter Kit.....	<b>Error! Bookmark not defined.</b>
Oil Line Kits.....	33
Oil Lines & Fittings.....	33
Fan & Fan Hub Assemblies.....	34
Miscellaneous Fan Parts.....	34
Miscellaneous Parts .....	35
Clutch Assemblies .....	36
Clutch Conversion Kits (Single to Double Bearing) .....	36
C-46 Overhaul List .....	37
C-66 Overhaul List .....	38
C-96 Overhaul List .....	39
C-106 Overhaul List .....	40
<b>Fairbanks-Morse .....</b>	<b>41</b>
Carburetor Kits .....	42
Carburetor Related Parts .....	42
Head Gaskets .....	43
Gasket Sets.....	43
Piston Ring Sets.....	45
Wrist Pin & Bushing .....	44
Connecting Rod Bearings & Shims.....	45
Valve Kits.....	48
Miscellaneous Valve Parts .....	48
Valve Guides.....	49
Spark Plug Wire Assembly.....	50
Clutch Drive Plates .....	50
Oil-Less Bronze Bushings.....	51
Fan & Fan Hub Assemblies.....	51

# TABLE OF CONTENTS

Flywheel Ignition Kits .....	51
<b>IMPCO .....</b>	<b>53</b>
Carburetors .....	54
Mixer Assemblies .....	54
Carburetor Parts.....	54
Dry Air Cleaner Assemblies & Accessories.....	57
Vortex Oil Bath Air Cleaners .....	57
<b>Clutches .....</b>	<b>58</b>
Clutch Assemblies .....	59
Friction Plates.....	59
Drive Rings .....	60
Hub & Back Plates .....	60
Clutch Shafts .....	61
Operating Shafts .....	61
Sliding Sleeve Assemblies.....	61
Brass Collars .....	62
Yokes .....	62
Pilot Bearings .....	62
Main Bearings .....	63
Miscellaneous Parts .....	63
C106 Parts .....	65
C106 Double Bearing Parts .....	66
C107 Parts .....	67
C107 Double Bearing Parts .....	68
C108 Parts .....	69
C110 Parts .....	70
SP111 Parts .....	71
SP211 Parts .....	72
SPE211 Parts .....	73
SP114 Parts .....	74
SPE114 Parts .....	75
SP214 Parts .....	76
SPE214 Parts .....	77
SP314 Parts .....	78
SPE314 Parts .....	79
<b>Miscellaneous .....</b>	<b>80</b>
Ignition Parts .....	81
Witte Engine Parts .....	81
Lufkin Engine Parts.....	81
Ford Governor .....	81
Gemini G26 .....	82

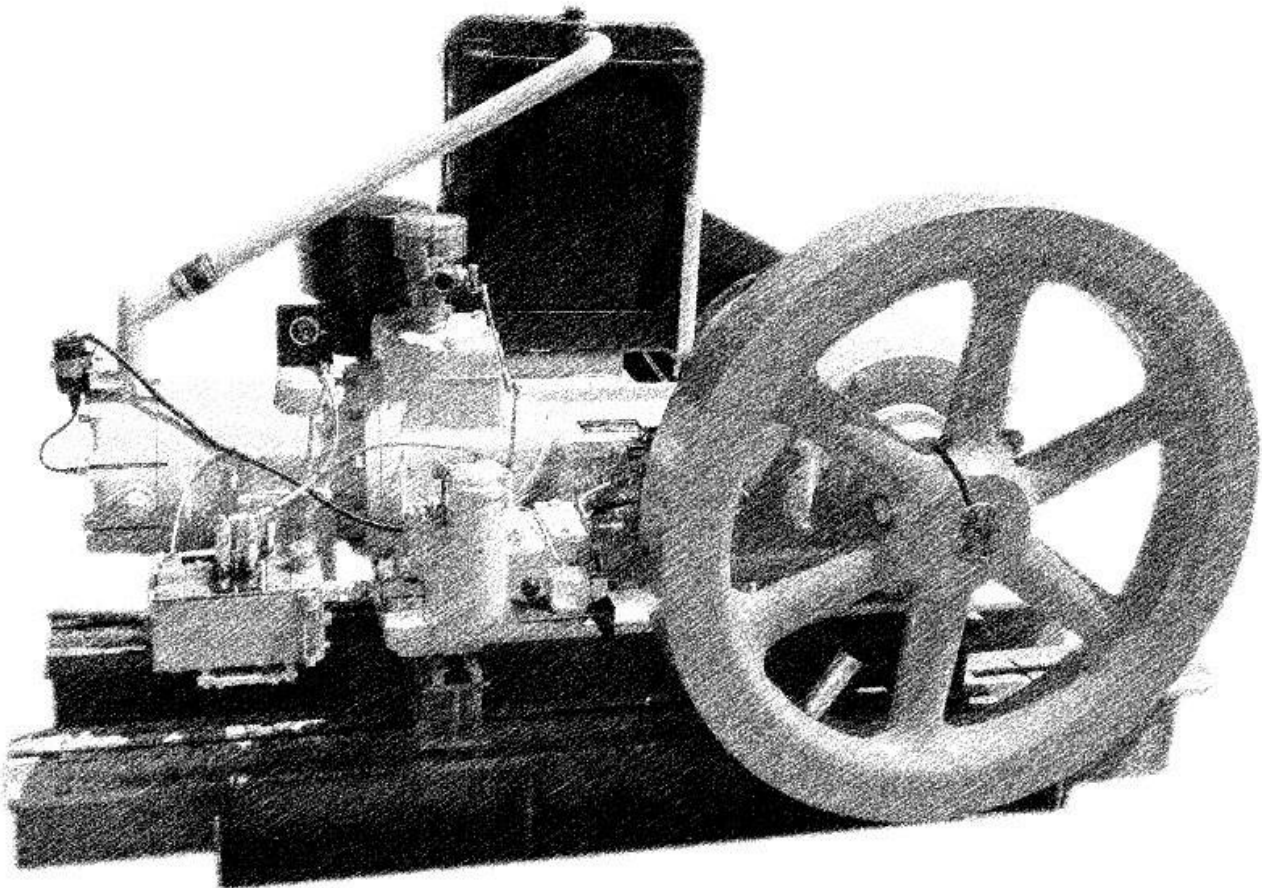
# TABLE OF CONTENTS

Waukesha.....	82
<b>Gaskets.....</b>	<b>83</b>
Ajax.....	84
Arrow .....	86
Fairbanks-Morse .....	87
Turbo.....	89
Lufkin.....	89
Gemini.....	89
IMPCO .....	89

# **TIMCO** **SERVICE & SUPPLY**

## **AJAX**

*Model WL though DP-80*



## Carburetor Kits

TK-CMA-8-AH	8" Stroke Engines, CMA Carburetor w/ Air Horn Adapter
TK-2230	EA-22/EA-30 Carburetor w/ bracket and Fuel Valve
TK-42	E-30/E-42 Carburetor w/ Bracket and Butterfly Valve
TK-42-WBV	E-30/E-42 Carburetor w/ Bracket and Butterfly Valve

## Carburetor Parts

200AV	2" Air Vent Hose
258AV	2-5/8" Air Vent Hose
300AV	3" Air Vent Hose
400AV	4" Air Vent Hose
AB1-54	Fuel Valve
AH-2312	Air Horn Adapter, 2.312" Bore
AH-2625	Air Horn Adapter, 2.625" Bore
BM-10879	Throttle Rod End
CAST-30	TK-2230 Carburetor Bracket
CAST-42	TK-42 Carburetor Bracket
CAST-60	TK-60 Carburetor Bracket
S-78	7-1/4 x 8 CMA Air Cleaner, Oil Bath
S-110-E	8-1/2 x 10 CMA Air Cleaner, Oil Bath
SA-60	5-1/2 x 6 WL Air Cleaner, Oil Bath
SA-120	E-30, EA-30, E-42, DP-60 Air Cleaner Oil Bath
TAC-250-KIT	Dry Element Air Cleaner for CMA Engines
TAC-300-KIT	Dry Element Air Cleaner for E & EA Series Engines

## Head Gaskets

A-3954-F	WL Grafoil Head Gasket
A-3650-F	EA-22 Grafoil Head Gasket
A-3650-GHD	EA-22 Heavy Duty, Grafoil Head Gasket
A-3750-F	EA-30 Grafoil Head Gasket

<b>GILLETTE LOCATION</b> 100 N HIGHWAY 14-16 PO BOX 3200 GILLETTE, WY 82716 P: (307) 682-5262 F: (307) 682-2240	<b>OKLAHOMA LOCATION</b> 1021 NE 29 <sup>TH</sup> ST OKLAHOMA CITY, OK 73129 P: (405) 602-6927	<b>TIMCOSERVICE.COM</b> INFO@TIMCOSERVICE.COM TOLL FREE: (800) 688-4620	<b>8</b>
--	---	---	----------



A-3750-GHD	EA-30 Heavy Duty, Grafoil Head Gasket
M-1550-F	E-30 Grafoil Head Gasket
M-1550-GHD	E-30 Heavy Duty, Grafoil Head Gasket
A-3204-F	E-42 Grafoil Head Gasket
A-3204-GHD	E-42 Heavy Duty, Grafoil Head Gasket
A-3205	8-1/2 X 10 CMA 2 Piece Head Plate Gasket
A-3834-H	DP-60 Grafoil Head Gasket
A-3834-GHD	DP-60 Heavy Duty, Grafoil Head Gasket
A-2804-G	DP-80 Grafoil Head Gasket
A-2804-GHD	DP-80 Heavy Duty, Grafoil Head Gasket
A-433-M	DP-115 Grafoil Head Gasket

## Gasket Sets

TGS-154	7-1/4 x 8 CMA/EA-30 Cylinder Change Gasket Set
TGS-156	8-1/2 x 10 CMA/E-42 Cylinder Change Gasket Set
TGS-157	DP-60 Cylinder Change Gasket Set
TGS-158	DP-80 Cylinder Change Gasket Set
TGS-6789-A-C	7-1/4 x 8 CMA/EA-30 Overhaul Gasket Set
TGS-6790-B	8-1/2 x 10 CMA/E-42 Overhaul Gasket Set
TGS-7043-A	DP-60 Overhaul Gasket Set
TGS-6979-C	DP-80 Overhaul Gasket Set

## Miscellaneous Gaskets

A-1181	Exhaust Flange Gasket, 6"
A-1717	DP-60/80 Rear Cover Gasket
A-2233-T	DP80/115 Side Cover Gasket
A-2569	Water Connector Gasket
A-2588-A	Mixer Box to Air Horn Gasket, DP-80/115
A-2764-A	Bearing Support Cover Gasket
A-2781	Water Inlet Gasket, DP-115
A-2838-B	Lubrication Bracket Gasket
A-2846-A	Gasket, Flat Round
A-3126	Control Box Gasket
A-3131	Layshaft Gasket

<u>GILLETTE LOCATION</u> 100 N HIGHWAY 14-16 PO BOX 3200 GILLETTE, WY 82716 P: (307) 682-5262 F: (307) 682-2240	<u>OKLAHOMA LOCATION</u> 1021 NE 29 <sup>TH</sup> ST OKLAHOMA CITY, OK 73129 P: (405) 602-6927	<u>TIMCOSERVICE.COM</u> INFO@TIMCOSERVICE.COM TOLL FREE: (800) 688-4620	<b>9</b>
--	---	---	----------

A-3139	Cover Gasket
A-3167-A	Control Box Cover Oval Gasket
A-3172-A	Main Bearing Support Gasket, E42
A-3174-A	Cylinder to Bed Gasket, E-42
A-3175	Magneto Drive Gasket
A-3176	CMA Mixer Box Gasket
A-3177-A	Gasket Breather Plate
A-3178-A	Gasket-Side Cover FWS
A-3180	Gasket-Top Cylinder Cover Gasket
A-3181	Exhaust Flange Gasket, 4"
A-3184-A	Cover Plate Gasket
A-3185	Gasket-Lubricator Bracket
A-3427	Air Cleaner to Air Horn Gasket
A-3465	Top Cylinder Gasket
A-3676	Mixer Valve Gasket
A-3678	Layshaft Tube Flange Gasket
A-3680	Top Cylinder Cover Gasket
A-3719	Mixer Gasket
A-3720	Airhorn Gasket to Mixer Gasket
A-3752	Water Neck Gasket
A-3897	Side Cover Gasket, Clutch Side
A-3898	E-42/DP-60 Mixer Box Gasket
A-3899	Airhorn Gasket to Mixer Gasket
A-3954-F	WL Grafoil Head Gasket
A-4075-1	Fan Gasket
A-433-M	DP-115 Grafoil Head Gasket
BM-10022	Copper Fuel Injection Gasket
BM-10108-A	Layshaft Tube Seal
BM-10500	DP-80 Stuffing Box Gasket
BM-10501	EA-30 Stuffing Box Gasket
BM-10502	E-42/DP-60 Stuffing Box Gasket
B-1062	Clean Out Hole Gasket
M-1550-F	E-30 Grafoil Head Gasket
M-1550-GHD	E-30 Heavy Duty, Grafoil Head Gasket
M-2632	Governor Gasket 3 Bolt
M-2654	Gasket-Large Side Cover CS
M-2660-2	Water Connector Gasket

<p><u>GILLETTE LOCATION</u>  100 N HIGHWAY 14-16  PO BOX 3200  GILLETTE, WY 82716  P: (307) 682-5262  F: (307) 682-2240</p>	<p><u>OKLAHOMA LOCATION</u>  1021 NE 29<sup>TH</sup> ST  OKLAHOMA CITY, OK 73129  P: (405) 602-6927</p>	<p><u>TIMCOSERVICE.COM</u>  INFO@TIMCOSERVICE.COM  TOLL FREE: (800) 688-4620</p>	<p><b>10</b></p>
---	---	--	------------------

## Rod Packing

BM-1334-B-1	EA-22/EA-30 Garlock Rod Packing
BM-1334-J-1	EA-22/EA-30 Rod Packing
BM-1333-B-1	E-42/DP-60 Garlock Rod Packing
BM-1333-K-1	E-42/DP-60 Rod Packing
BM-1330-E-1	DP-70/DP-80/DP-160 Rod Packing
BM-1328-L-1	DP-115/DP-230 Rod Packing

## Piston Rings

TRS-100	WL Piston Ring Set
TRS-101	WL Piston Ring Set, 1/8" Oversize
TRS-102	6-1/2 x 8 CMA Piston Ring Set
TRS-104	7-1/4 x 8 CMA Piston Ring Set
TRS-105	7-1/4 x 8 CMA Piston Ring Set, 1/8" Oversize
TRS-106-AJX	EA-30 Piston Ring Set
TRS-108	7-1/2 x 10 CMA Piston Ring Set
TRS-110	E-30 Piston Ring Set
TRS-112	8-1/2 x 10 CMA Piston Ring Set
TRS-113	8-1/2 x 10 CMA Piston Ring Set, 1/8" Oversize
TRS-114	E-42 Piston Ring Set
TRS-115	E-42 Piston Ring Set, 1/8" Oversize
TRS-116	DP-60 Piston Ring Set
TRS-120	DP-80 Piston Ring Set
TRS-172	EA-22 Piston Ring Set
TRS-183	EA-42 Piston Ring Set, 1/16" Oversize
TRS-186	8-1/2 x 10 CMA Piston Ring Set, 1/16" Oversize

## Crosshead Pins & Bushings

A-3524	EA-30 Crosshead Pin
M-1636-BR	EA-30 Crosshead Pin Bushing
M-1422-T	E-42 Crosshead Pin
M-1436-C-1-R	E-42 Crosshead Pin Bushing

<b>GILLETTE LOCATION</b> 100 N HIGHWAY 14-16 PO BOX 3200 GILLETTE, WY 82716 P: (307) 682-5262 F: (307) 682-2240	<b>OKLAHOMA LOCATION</b> 1021 NE 29 <sup>TH</sup> ST OKLAHOMA CITY, OK 73129 P: (405) 602-6927	<a href="http://TIMCOSERVICE.COM">TIMCOSERVICE.COM</a> INFO@TIMCOSERVICE.COM TOLL FREE: (800) 688-4620	<b>11</b>
--	---	--	-----------

A-3808	DP-60 Crosshead Pin
A-3836-1-R	DP-60 Crosshead Pin Bushing
A-1608-C	DP-60 Crosshead Pin
A-1678-1	DP-60 Crosshead Pin Bushing

## Rod Bearing & Shims

A-3556-B	EA-30 Rod Bearing
M-1639-B	EA-30 Laminated Shim
M-1639-B-1	EA-30 Solid Shim
A-3056-C	E-42 Rod Bearing
A-3058-A	E-42 Laminated Shim
A-3058-A-1	E-42 Solid Shim
A-3810	DP-60 Rod Bearing
A-3826-A	DP-60 Laminated Shim
A-3826-A-1	DP-60 Solid Shim
A-1656-E	DP-80 Rod Bearing
A-1659-F	DP-80 Laminated Shim
A-1659-F-1	DP-80 Solid Shim
A-3097	E-42 Connecting Rod Bolt Collar
A-3098-C	E-42 Connecting Rod Bolt
A-5455	DP-60 Connecting Rod Bolt

## Governor Kits & Parts

TRK-161	Old Style (3 Bolt) Governor Repair kit w/ Weights
TRK-162	New Style (4 Bolt) Governor Repair Kit w/ Weights
BM-626-T	Governor Cross Shaft Bushing
M-2528-LK	Governor Lever Kit

## Lubricators & Lubricator Parts

7003-1G	Lubricator Assembly, 4 Pint Capacity, One Pump
90060	Premier Drive Gear (20 Tooth)
90132	Sight Glass Gasket

<b>GILLETTE LOCATION</b> 100 N HIGHWAY 14-16 PO BOX 3200 GILLETTE, WY 82716 P: (307) 682-5262 F: (307) 682-2240	<b>OKLAHOMA LOCATION</b> 1021 NE 29 <sup>TH</sup> ST OKLAHOMA CITY, OK 73129 P: (405) 602-6927	<b>TIMCOSERVICE.COM</b> INFO@TIMCOSERVICE.COM TOLL FREE: (800) 688-4620	<b>12</b>
--	---	---	-----------

90175	Lubricator Pump Gasket
90199	Oil Filler Cap
90232	Plastic Sight Glass
90289	Spring
90351	Lubricator Shaft, Modular Lube
90414	Lubricator Gasket, Lincoln or McCord
90617	Drive Shaft Nut w/ Bushing, Modular Lube
91200-G	Lubricator Pump Assembly - Graco
91200-L	Lubricator Pump Assembly - Lincoln
91390	Sight Glass
91392	Sight Glass Assembly
92350	Gauge Glass Assembly
LO70 COUPLING	Lubricator Coupling, Keyed for Lubricator and Layshaft
LO70 SPIDER	Lubricator Spider
BM-1406	Lubricator Shaft Oil Seal

## Radiators

BM-10011-NEW	E-30/E-42 Radiator
BM-10725-NEW	DP-60 Radiator
172312-S	E-42/EA-30 Radiator Cap
172312-L	E-42/EA-30 Radiator Cap, Long Reach
200R	2" Radiator Hose
275R	2.75" Radiator Hose
BM-10737	DP-60 Radiator Mount

## Safety Switches & Gauges

20T-250	Temperature Gauge
L-129	Crankcase Oil Level Gauge
507-K	Oil Level Controller

<u>GILLETTE LOCATION</u> 100 N HIGHWAY 14-16 PO BOX 3200 GILLETTE, WY 82716 P: (307) 682-5262 F: (307) 682-2240	<u>OKLAHOMA LOCATION</u> 1021 NE 29 <sup>TH</sup> ST OKLAHOMA CITY, OK 73129 P: (405) 602-6927	<u>TIMCOSERVICE.COM</u> INFO@TIMCOSERVICE.COM TOLL FREE: (800) 688-4620	<b>13</b>
--	---	---	-----------

## Water Pipes & Water Necks

A-3068-F	EA-30/E-42 Upper Water Pipe
A-3069-F	EA-30/E-42 Lower Water Pipe
A-3840-T	DP-60 Upper Water Pipe
A-3841-T	DP-60 Lower Water Pipe
A-2910-A	DP-80 Upper Water Pipe
A-2911	DP-80 Lower Water Pipe
A-3752	Water Neck Gasket

## Spark Plugs & Spark Plug Wires

SPW-12	12" Spark Plug Wire Assembly
SPWA-18	18" Spark Plug Wire Assembly
W18	Autolite Spark Plug for Ajax Engines
W18C	Champion Spark Plug for Ajax Engines

## Fan Belts & Belt Guards

B-112	DP-60 Fan Belt, Requires Two
B-120	DP-80 Fan Belt, Requires Two
CX-81	EA-30 Fan Belt
CX-96	E-42 Fan Belt
A-3023-A	EA-30/E-42 Fan Guard
A-3067-A-C	E-42 Fan Belt Guard

<u>GILLETTE LOCATION</u> 100 N HIGHWAY 14-16 PO BOX 3200 GILLETTE, WY 82716 P: (307) 682-5262 F: (307) 682-2240	<u>OKLAHOMA LOCATION</u> 1021 NE 29 <sup>TH</sup> ST OKLAHOMA CITY, OK 73129 P: (405) 602-6927	<u>TIMCOSERVICE.COM</u> INFO@TIMCOSERVICE.COM TOLL FREE: (800) 688-4620	<b>14</b>
--	---	---	-----------

## Fans, Fan Repair Kits, and Fan Parts

TRK-164	EA-30/E-42 Fan Hub Repair Kit
YAE-2086-T	EA-30/E-42 Fan Hub Assembly, No Blades
YAE-2088-T	EA-30/E-42 Fan Assembly, Complete
YAE-6086-RPK	DP-60 Fan Hub Repair Kit
YAE-6086-T	DP-60 Fan Hub Assembly, No Blades
YAE-8086	DP-80 Fan Hub Assembly, No Blades
S11-908083-T	EA-30/E-42 Fan Blade, Steel
A-4080-T	E-42/DP-60 Fan Hub Plug
A-4081-T	DP-80 Fan Hub Plug
473228-T	E-42/DP-60 Fan Hub Seal

## Oil Lines

OLK-30-GOV	8" Stroke Engines, Governor to Lubricator Braided Oil Line Kit
OLK-42-CYL	10" Stroke Engines, Cylinder to Lubricator Braided Oil Line Kit
OLK-42-GOV	10" Stroke Engines, Governor to Lubricator Braided Oil Line Kit
OLK-60-CYL	DP-60 Cylinder to Lubricator Steel Braided Oil Line Kit (3 Lines)
OLK-60-GOV	DP-60 Governor to Lubricator Steel Braided Oil Line Kit
AJAX DB OIL LINE	Drain Back Oil Line, Side Cover to Control Box
BM-10885	Cylinder Check Valve for 1/4" Copper Tubing
BM-10886	Cylinder Check Valve Extension for 1/4" Copper Tubing
BM-10885-T	Cylinder Check Valve for Steel Braided Oil Line
BM-10886-T	Cylinder Check Valve Extension for Steel Braided Oil Line

## Starters & Repair Kits

YAE-1241-HD	E-42 Starter, Heavy Duty
TK-E42-SD	E-42 Starter Repair Kit, Standard Duty (Straight Spline)

<b>GILLETTE LOCATION</b> 100 N HIGHWAY 14-16 PO BOX 3200 GILLETTE, WY 82716 P: (307) 682-5262 F: (307) 682-2240	<b>OKLAHOMA LOCATION</b> 1021 NE 29 <sup>TH</sup> ST OKLAHOMA CITY, OK 73129 P: (405) 602-6927	<b>TIMCOSERVICE.COM</b> INFO@TIMCOSERVICE.COM TOLL FREE: (800) 688-4620	<b>15</b>
--	---	---	-----------

TK-E42-HD	E-42 Starter Repair Kit, Heavy Duty (Spiral Spline)
TK-E42-HDG	E-42 Starter Repair Kit, Heavy Duty w/ Large Gear

## Starter Parts

AA10491	DP-60 Starter Motor Bushing
AA1108	DP-60 Starter Motor Bushing
A-3250	E-42 Starter Housing
A-3251-A	Starter Cover
A-3252	Starter Engagement Yoke
A-3253	E-42 Starter Cross Shaft
A-3254-C	Starter Button Housing Cover
A-3255	E-42 Copper Conductor
A-3257	Starter Button Housing
A-3350	DP-60 Starter Housing
A-3351	DP-60 Small Starter Gear
A-3352-1	DP-60 Large Starter Gear
A-3353	DP-60 Starter Cross Shaft
A-3354	DP-60 Starter Spring Retainer
A-3355-A	DP-60 Starter Copper Conductor
A-3356	DP-60 Starter Shaft Bushing
A-3357	DP-60 Starter Shaft Bushing
A-3368	DP-60 Starter Stop Collar
A-3369	DP-60 Starter Snap Ring
A-3881-C	DP-60 Starter Shaft, 6 Spline
A-3881-T	DP-60 Starter Shaft, 19 Spline
A-3975-A	E-42 Starter Gear, Small
A-3976-HD	E-42 Starter Gear, Large
A-3978	E-42 Starter Shaft, Straight Spline
A-3978-HD	E-42 Starter Shaft, Spiral Spline
BM-10228-HD	E-42 Starter Motor
BM-10230-A	E-42 Starter Drive, Straight Spline
BM-10230-HD	E-42 Starter Drive, Spiral Spline
BM-10231	Receptacle Assembly
BM-10231-KIT	Receptacle Repair Kit
BM-10234-HD	E-42 Starter E-Clip
BM-10235-A	E-42 Starter Bushing

<u>GILLETTE LOCATION</u> 100 N HIGHWAY 14-16 PO BOX 3200 GILLETTE, WY 82716 P: (307) 682-5262 F: (307) 682-2240	<u>OKLAHOMA LOCATION</u> 1021 NE 29 <sup>TH</sup> ST OKLAHOMA CITY, OK 73129 P: (405) 602-6927	<u>TIMCOSERVICE.COM</u> INFO@TIMCOSERVICE.COM TOLL FREE: (800) 688-4620	<b>16</b>
--	---	---	-----------



BM-10236-A	E-42 Starter Bushing
BM-10236-HD	E-42 Starter Bushing, Heavy Duty
BM-10245-A	Roll Pin for Starter
BM-10560	Starter Solenoid
BM-10561	Solenoid Plunger
BM-10565-A	Starter Push Button Switch
BM-10583	Plunger Return Spring
BM-10584	Starter Spring Retainer
BM-10721	DP-60 Starter Motor
BM-10743	DP-60 Starter E-clip
BM-10792	DP-60 Starter Woodruff Key
BM-10817	E-42 Starter Woodruff Key
BM-10817-HD	E-42 Starter Woodruff Key, Heavy Duty
OA-9109	E-42 Starter Retainer Ring, Heavy Duty
OA-9207	E-42 Starter Retainer, Heavy Duty
P8712	E-42 Starter Motor Bushing, Gear End
SPEC 7485	DP-60 Starter Drive, 19 Spline
WPI-113	Cannon Plug
YAE-1247	Starter Button Assembly
YAE-1248	E-42 Starter Motor Cable, 10" (Old Style Motor)
YAE-1248-HD	E-42 Starter Motor Cable, 6-1/2" (New Style Mother)

## Jumper Cables (Custom length available upon request)

JC-20-AC	20' Jumper Cable Set with Clamps and Cannon Plug
JC-25-AA	25' Jumper Cable Set with Alligator Clips on Both Ends

## Overspeed Switch & Bolt Assemblies

T-38-TA	Over Speed Switch Support
YT-154-T	Over Speed Switch
YAE-1580-A-T	E-42 Overspeed bolt Assembly
YAE-6080-T	DP-60/CMA 8 1/2x10 Overspeed Bolt Assembly

<u>GILLETTE LOCATION</u> 100 N HIGHWAY 14-16 PO BOX 3200 GILLETTE, WY 82716 P: (307) 682-5262 F: (307) 682-2240	<u>OKLAHOMA LOCATION</u> 1021 NE 29 <sup>TH</sup> ST OKLAHOMA CITY, OK 73129 P: (405) 602-6927	<u>TIMCOSERVICE.COM</u> INFO@TIMCOSERVICE.COM TOLL FREE: (800) 688-4620	<b>17</b>
--	---	---	-----------



## Miscellaneous Ajax Parts

A-111-C	DP-80/160 Cylinder Head Stud
A-2549-A	Fuel Injection Plug Cover Plate
A-2572	Fuel Injection Plug
A-2693-F	DP-115 Mixer Valve
A-2829	DP-80 Mixer Valve
A-3014-A	E-42 Oil Slinger
A-3069	Lever
A-3128-1	Magneto Drive Gear
A-3220	E-42 Starter Ring Gear
A-3225-A	Tapered Key, Clutch Side
A-3420	EA-30 Starter Ring Gear
BM-1406	Mag Drive/Lubricator Shaft Oil Seal
BM-1421	E-42 Crankshaft Oil Seal
BM-1434	EA-30 Crankshaft Oil Seal
BM-1757-A	Compression Release Valve
BM-10006-T	E-42 Main Bearing
BM-10111	Oil Filler Cap
BM-10465-O	Layshaft Seal, Lip Style
BM-10465-T	Layshaft Seal, Mechanical Style
BM-10745	Governor Weight Lift Pin
BM-10781	U-Cup Seal
BM-11466-0820	Magneto Drive Nylon Lock Nut
BM-11903-06	Magneto Drive Woodruff Key
FM601-NB	Ignition system 66/96
FMAJAX-Stand	Arrow Stand
M-1471-D	E-42/DP-60 Mixer Valve
M-2548-A	Stud, Double Ended
NFS-6L	No Flow Switch
K-6375-A	Dowell Pin
M-1485	Mixer Valve Spring
M-1671-B-1	EA-30 Mixer Valve
M-1710-A-1	EA-30 Oil Slinger
M-2001-H	Hex Head Cap Screw

<u>GILLETTE LOCATION</u> 100 N HIGHWAY 14-16 PO BOX 3200 GILLETTE, WY 82716 P: (307) 682-5262 F: (307) 682-2240	<u>OKLAHOMA LOCATION</u> 1021 NE 29 <sup>TH</sup> ST OKLAHOMA CITY, OK 73129 P: (405) 602-6927	<u>TIMCOSERVICE.COM</u> INFO@TIMCOSERVICE.COM TOLL FREE: (800) 688-4620	<b>18</b>
--	---	---	-----------

M-2421-T	Mag Drive Bushing
M-2548-A	Stud Double Ended
YAE-1222	Compression Release Valve (NEW)
YAE-1222-R	Compression Release Valve (RECONDITIONED)

## Hardware & Tools

21000	Lisle Ring Compressor, 3-1/2" - 7"
21500	Lisle Ring Compressor, 7" - 10"
3/4 HD	3/4" Cylinder Head Stud
A-336	DP-60 Double End Stud
A-2853-E	DP-60 Cylinder Head Stud
A-3790	E-42 Cylinder Head Stud
BM-11910-0813	EA-30/E-42 Piston Rod Jam Nut
BM-11921-0813-06	EA-30/E-42 Piston Lock Bolt
M-1019-A	E-42/DP-60 Piston Rod Nut
M-1619	EA-30 Piston Rod Nut
T-181	Flywheel Wedge
T-634-D	Piston Thimble, 8-1/2 x 10 & DP-60

## Mag Drive Assembly & Repair Kit

YAE-1561-KIT	Mag Drive Repair Kit
YAE-1561-S-C	Mag Drive Coupling Shaft

## Gasoline Flywheel Starter

HS6	Happy Starter Friction Wheel, 6 x 3 x 1.5
HS6-1	Happy Starter Friction Wheel, 6 x 3 x 1
HS6-2	Happy Starter Friction Wheel, 6 x 3 x 2

<u>GILLETTE LOCATION</u> 100 N HIGHWAY 14-16 PO BOX 3200 GILLETTE, WY 82716 P: (307) 682-5262 F: (307) 682-2240	<u>OKLAHOMA LOCATION</u> 1021 NE 29 <sup>TH</sup> ST OKLAHOMA CITY, OK 73129 P: (405) 602-6927	<u>TIMCOSERVICE.COM</u> INFO@TIMCOSERVICE.COM TOLL FREE: (800) 688-4620	<b>19</b>
--	---	---	-----------

## Pilot Bearing Housings, Bearing, and Kits

M2467T	72mm Pilot Bearing, 2 Piece
M2529T	80mm Pilot Bearing, 2 Piece
M2713T	100mm Pilot Bearing, 2 Piece
A-3424-T	EA-22/EA-30, Pilot Bearing Housing
A-3424-T-KIT	EA-22/EA-30, Pilot Bearing Housing w/ Bearing Installed
A-3224-T	EA-42/EA-60, Pilot Bearing Housing
A-3224-T-KIT	EA-42/EA-60, Pilot Bearing Housing w/ Bearing Installed
A-2843-A	DP-80 Pilot Bearing Housing
A-2843-A-KIT	DP-80, Pilot Bearing Housing w/ Bearing Installed

## Mufflers

SURS-4	Critical Grade Muffler, 4" Flange
SURS-6	Critical Grade Muffler, 6" Flange
URB-4	Industrial Grade Muffler, 4" Flange
URB-6	Industrial Grade Muffler, 6" Flange
A-3026-T	4" Exhaust Flange

## Clutch Assemblies *(Includes Drive Ring, Handle, and Pilot Bearing)*

C108HP4	5-1/2 x 6 WL, Clutch Assembly
SP111HP2	6-1/2 x 8 CMA, EA-22, 7-1/4 x 8 CMA Clutch Assembly
SP211HP2	EA-30 Clutch Assembly
SP114HP1	7-1/2 x 10 CMA, 8-1/2 x 10 CMA, E-30, E-42 Clutch Assembly
SP214HP0	DP-60 Clutch Assembly
SP314HP0	DP-80 Clutch Assembly

<b>GILLETTE LOCATION</b> 100 N HIGHWAY 14-16 PO BOX 3200 GILLETTE, WY 82716 P: (307) 682-5262 F: (307) 682-2240	<b>OKLAHOMA LOCATION</b> 1021 NE 29 <sup>TH</sup> ST OKLAHOMA CITY, OK 73129 P: (405) 602-6927	<b>TIMCOSERVICE.COM</b> INFO@TIMCOSERVICE.COM TOLL FREE: (800) 688-4620	<b>20</b>
--	---	---	-----------

## 7-1/4 x 8 CMA, EA-30 Overhaul List

AJSAX

Qty	Part Number	Description
12"	200R	Radiator Hose
1	20T-250	Temperature Gauge
1	30050032	Gauge Panel
1	507-K	Oil Level Controller
1	6625D	Drive Ring (111)
1	6931T	Drive Ring (211)
1	7003-1G	Lubricator Box
1	91200-G	Lubricator Pump
1	A-3068-F	Upper Water Pipe
1	A-3069-F	Lower Water Pipe
1	A-3420	Starter Ring Gear
1	A-3524	Wrist Pin
1	A-3556-B	Rod Bearing
6	A-3952	Cylinder Head Stud
1-2	A-5579	Clutch Plate (1 piece)
1	BM-10011-NEW	Radiator
1	BM-10111	Oil Filler Cap
1	BM-10465-T	Layshaft Seal, Mechanical
1	BM-10465-O	Layshaft Seal, Lip
1	BM-10560	Solenoid
2	BM-10879	Throttle Rod End
1	BM-1334-J-1	Rod Packing
1	BM-1406	Lubricator Oil Seal
1	BM-1434	Crankshaft Seal
1	BM-1757-A	Compression Relief Valve
1	CX-81	Fan Belt
1	G1-Y-1	Altronic Kit
1	L-129	Oil Level Switch
2	LO70 Coupling	Lovejoy Coupling
1	LO70 Spider	Lovejoy Spider
5	M-1471-D	Mixer Valve
10	M-1485	Mixer Spring
1	M-1636-BR	Wrist Pin Bushing
2	M-1639-B	Laminated Shim
2	M-1639-B-1	Solid Shim
1	M-1710	Oil Slinger

Qty	Part Number	Description
2	M207	Main Bearing
8	M2115C	Spring Washer
2	M2196	Main Bearing
2	M2241	Cam Roll
1	M2467T	Pilot Bearing, 2 Piece
1	OLK-30-CYL	Oil Line Kit
1	OLK-30-GOV	Oil Line Kit
1	SP111HP2	Clutch
1	SP211HP2	Clutch
1	TAC-250-KIT	Dry Air Cleaner (CMA)
1	TAC-300-KIT	Dry Air Cleaner (EA-30)
1	TGS-6789-A-C	Overhaul Gasket Set
1	TK-2230	Carburetor Kit
1	TK-CMA-8-AH	Carburetor Kit
1	TK-42-HD	HD Starter Kit
1	TRK-161	Old Style Governor Repair Kit
1	TRK-162	New Style Governor Repair Kit
1	TRK-164	Fan Repair Kit
1	TRS-104	EA-30 Ring Set
1	TRS-106	CMA Ring Set
1	W18	Spark Plug
1	X117	Brass Collar (111)
1	X117C10	Brass Collar (211)
1	YAE-1561-KIT	Mag Drive Kit
1	YT-154-RPK	Overspeed Repair Kit
1	YT-154-T	Overspeed Switch

<b>GILLETTE LOCATION</b> 100 N HIGHWAY 14-16 PO BOX 3200 GILLETTE, WY 82716 P: (307) 682-5262 F: (307) 682-2240	<b>OKLAHOMA LOCATION</b> 1021 NE 29 <sup>TH</sup> ST OKLAHOMA CITY, OK 73129 P: (405) 602-6927	<b>TIMCOSERVICE.COM</b> INFO@TIMCOSERVICE.COM TOLL FREE: (800) 688-4620	<b>21</b>
--	---	---	-----------

## 7-1/2 x 10 CMA, E-30 Overhaul List

AJSAX

Qty	Part Number	Description
12"	200R	Radiator Hose
1	20T-250	Temperature Gauge
1	30050032	Gauge Panel
1	507-K	Oil Level Controller
1	5659-K	Clutch Plate (1 piece)
1	5712B	Drive Ring (114)
1	7003-1G	Lubricator Box
1	91200-G	Lubricator Pump
1	A-3014-A	Oil Slinger
1	A-3056-C	Con Rod Bearing
2	A-3058-A	Laminated Shim
2	A-3058-A-1	Solid Shim
1	A-3068-F	Upper Water Pipe
1	A-3069-F	Lower Water Pipe
1	A-3220	Starter Ring Gear
1	A-3224-T-KIT	Pilot Bearing Housing
8	A-3790	Head Stud
2	BM-10006-T	Crank Main Bearing
1	BM-10011-NEW	Radiator
1	BM-10111	Oil Filler Cap
1	BM-10465-T	Layshaft Seal, Mech
1	BM-10465-O	Layshaft Seal, Lip
1	BM-10560	Solenoid
2	BM-10879	Throttle Rod End
1	BM-1333-K-1	Rod Packing
1	BM-1406	Lubricator Oil Seal
1	BM-1434	Crankshaft Seal
1	BM-1757-A	Compression Relief Seal
1	CX-96	Fan Belt
1	G1-X-1	Altronic Kit
1	L-129	Oil Level Switch
2	LO70 Coupling	Lovejoy Coupling
1	LO70 Spider	Lovejoy Spider
1	M-1422-T	Wrist Pin
1	M-1436-C-1-R	Wrist Pin Bushing
5	M-1471-D	Mixer Valve

Qty	Part Number	Description
10	M-1485	Mixer Spring
1	M-1550-F	Head Gasket
8	M2115D	Clutch Spring Washers
2	M2241	Cam Roll
1	M2529T	Pilot Bearing, 2 Piece
2	M282	Clutch Main Bearing
1	OLK-42-CYL	Oil Line Kit
1	OLK-42-GOV	Oil Line Kit
1	SP114HP1	Clutch
1	TAC-250-KIT	Dry Air Cleaner (CMA)
1	TAC-300-KIT	Dry Air Cleaner (E-30)
1	TK-42	Carburetor Kit
1	TK-CMA-10-AH	Carburetor Kit
1	TK-E42-HD	HD Starter Kit
1	TRK-161	Old Style Governor Repair Kit
1	TRK-162	New Style Governor Repair Kit
1	TRK-164	Fan Repair Kit
1	TRS-108	CMA Ring Set
1	TRS-110	E-30 Ring Set
1	W18	Spark Plug
1	X117B14	Brass Collar
1	YAE-1561-KIT	Mag Drive Kit
1	YT-154-RPK	Overspeed Repair Kit
1	YT-154-T	Overspeed Switch

<p><u>GILLETTE LOCATION</u>          100 N HIGHWAY 14-16          PO BOX 3200          GILLETTE, WY 82716          P: (307) 682-5262          F: (307) 682-2240</p>	<p><u>OKLAHOMA LOCATION</u>          1021 NE 29<sup>TH</sup> ST          OKLAHOMA CITY, OK 73129          P: (405) 602-6927</p>	<p><u>TIMCOSERVICE.COM</u>          INFO@TIMCOSERVICE.COM          TOLL FREE: (800) 688-4620</p>	<p><b>22</b></p>
---	---	--	------------------

## 8-1/2 x 10 CMA, E-42 Overhaul List

AJSAX

Qty	Part Number	Description
12"	200R	Radiator Hose
1	20T-250	Temperature Gauge
1	30050032	Gauge Panel
1	507-K	Oil Level Controller
1	5659-K	Clutch Plate, 1 Piece
1	5712B	Drive Ring (114)
1	7003-1G	Lubricator Box
1-2	91200-G	Lubricator Pump
1	A-3014-A	Oil Slinger
1	A-3056-C	Con Rod Bearing
2	A-3058-A	Laminated Shim
2	A-3058-A-1	Solid Shim
1	A-3068-F	Upper Water Pipe
1	A-3069-F	Lower Water Pipe
1	A-3204-F	Head Gasket
1	A-3220	Starter Ring Gear
1	A-3224-T-KIT	Pilot Bearing Housing
8	A-3790	Head Stud
2	BM-10006-T	Crank Main Bearing
1	BM-10011-NEW	Radiator
1	BM-10111	Oil Filler Cap
1	BM-10465-T	Layshaft Seal, Mech
1	BM-10465-O	Layshaft Seal, Lip
1	BM-10560	Solenoid
2	BM-10879	Throttle Rod End
1	BM-1333-K-1	Rod Packing
1	BM-1406	Lubricator Oil Seal
1	BM-1434	Crankshaft Seal
1	BM-1757-A	Compression Relief Seal
1	CX-96	Fan Belt
1	G1-X-1	Altronic Kit
1	L-129	Oil Level Switch
2	LO70 Coupling	Lovejoy Coupling
1	LO70 Spider	Lovejoy Spider
1	M-1422-T	Wrist Pin
1	M-1436-C-1-R	Wrist Pin Bushing
5-6	M-1471-D	Mixer Valve

Qty	Part Number	Description
10-12	M-1485	Mixer Spring
8	M2115D	Spring Washers
2	M2241	Cam Roll
1	M2529T	Pilot Bearing
2	M282	Main Bearing
1	OLK-42-CYL	Oil Line Kit
1	OLK-42-GOV	Oil Line Kit
1	SP114HP1	Clutch
1	TAC-250-KIT	Dry Air Cleaner (CMA)
1	TAC-300-KIT	Dry Air Cleaner (E-42)
1	TGS-6790-B	Overhaul Gasket Set
1	TK-42	Carburetor Kit
1	TK-CMA-10-AH	Carburetor Kit
1	TK-E42-HD	HD Starter Kit
1	TRK-161	Old Style Governor Repair Kit
1	TRK-162	New Style Governor Repair Kit
1	TRK-164	Fan Repair Kit
1	TRS-112	CMA Ring Set
1	TRS-114	E-42 Ring Set
1	W18	Spark Plug
1	X117B14	Brass Collar
1	YAE-1561-KIT	Mag Drive Kit
1	YAE-1580-A-T	Overspeed Bolt
1	YAE-6080-T	Overspeed Bolt (CMA)
1	YT-154-RPK	Overspeed Repair Kit
1	YT-154-T	Overspeed Switch

<b>GILLETTE LOCATION</b> 100 N HIGHWAY 14-16 PO BOX 3200 GILLETTE, WY 82716 P: (307) 682-5262 F: (307) 682-2240	<b>OKLAHOMA LOCATION</b> 1021 NE 29 <sup>TH</sup> ST OKLAHOMA CITY, OK 73129 P: (405) 602-6927	<b>TIMCOSERVICE.COM</b> INFO@TIMCOSERVICE.COM TOLL FREE: (800) 688-4620	<h1>23</h1>
--	---	---	-------------

## DP-60 Overhaul List

AJAX

Qty	Part Number	Description
12"	275R	Radiator Hose
1	20T-250	Temperature Gauge
1	30050032	Gauge Panel
1	507-K	Oil Level Controller
2	5659-K	Clutch Plate, 1 Piece
1	5713D	Drive Ring (214)
1	7003-1G	Lubricator Box
3	91200-G	Lubricator Pump
8	A-2853-E	Head Stud
1	A-3224-T-KIT	Pilot Bearing Housing
1	A-3808	Wrist Pin
1	A-3810	Con Rod Bearing
2	A-3826-A	Laminated Shim
2	A-3826-A-1	Solid Shim
1	A-3836-1-R	Wrist Pin Bushing
1	A-3840-B	Upper Water Pipe
1	A-3841-B	Lower Water Pipe
2	B-112	Fan Belt
1	BM-10111	Oil Filler Cap
1	BM-10465-T	Layshaft Seal, Mech
1	BM-10465-O	Layshaft Seal, Lip
1	BM-10473	Gas Valve Bearing
1	BM-10474	Gas Valve Bearing
1	BM-10560	Solenoid
1	BM-10725-NEW	Radiator
4	BM-10737	Radiator Mount
2	BM-10879	Throttle Rod End
1	BM-1333-K-1	Rod Packing
1	BM-1406	Lubricator Oil Seal
1	G1-X-1	Altronic Kit
1	L-129	Oil Level Switch
2	LO70 Coupling	Lovejoy Coupling
1	LO70 Spider	Lovejoy Spider
6	M-1471-D	Mixer Valve
12	M-1485	Mixer Spring
8	M2115D	Clutch Spring Washers

Qty	Part Number	Description
2	M215	Clutch Main Bearing
2	M2241	Cam Roll
1	M2529T	Pilot Bearing, 2 Piece
1	OLK-60-CYL	Oil Line Kit
1	OLK-60-GOV	Oil Line Kit
1	SP214HP0	Clutch Main Bearing
1	TAC-300-KIT	Dry Air Cleaner
1	TGS-7043-A	Overhaul Gasket Set
1	TK-60	Carburetor Kit
1	TRK-161	Old Style Governor Kit
1	TRK-162	New Style Governor Kit
1	TRS-116	Piston Ring Set
1	W18	Spark Plug
1	X117B14	Brass Collar
1	YAE-1561-KIT	Mag Drive Kit
1	YAE-6086-T	Overspeed Switch
1	YAE-6086-RPK	Fan Repair Kit
1	YAE-154-RPK	Overspeed Repair Kit
1	YT-154-T	Overspeed Switch

<p><u>GILLETTE LOCATION</u>          100 N HIGHWAY 14-16          PO BOX 3200          GILLETTE, WY 82716          P: (307) 682-5262          F: (307) 682-2240</p>	<p><u>OKLAHOMA LOCATION</u>          1021 NE 29<sup>TH</sup> ST          OKLAHOMA CITY, OK 73129          P: (405) 602-6927</p>	<p><u>TIMCOSERVICE.COM</u>          INFO@TIMCOSERVICE.COM          TOLL FREE: (800) 688-4620</p>	<p><b>24</b></p>
---	---	--	------------------



## DP-80 Overhaul List

ASJAX

Qty	Part Number	Description
12"	275R	Radiator Hose
1	20T-250	Temperature Gauge
1	30050032	Gauge Panel
1	507-K	Oil Level Controller
3	5659-K	Clutch Plate, 1 pc.
1	7003-1G	Lubricator Box
3	91200-G	Lubricator Pump
8	A-111-A	Head Stud
1	A-1608	Wrist Pin
1	A-1656-E	Con Rod Bearing
2	A-1659-F	Laminated Shim
2	A-1659-F-1	Solid Shim
1	A-1678-1	Wrist Pin Bushing
7	A-2829	Mixer Valve
1	A-2843-A-KIT	Pilot Bearing Housing
1	A6518A	Drive Ring (314)
2	B-120	Fan Belt
1	BM-10111	Oil Filler Cap
1	BM-1330-E-1	Rod Packing
1	BM-10465-T	Layshaft Seal, Mech
1	BM-10465-O	Layshaft Seal, Lip
1	BM-10473	Gas Valve Bearing
1	BM-10474	Gas Valve Bearing
1	BM-10560	Solenoid
2	BM-10879	Throttle Rod End
1	BM-1406	Lubricator Oil Seal
1	G1-X-1	Altronic Kit
1	L-129	Oil Level Switch
2	LO70 Coupling	Lovejoy Coupling
1	LO70 Spider	Lovejoy Spider
12	M-1485	Mixer Spring
8	M2115D	Clutch Spring Washers
2	M215	Clutch Main Bearing
2	M2241	Cam Roll
1	M2713T	Pilot Bearing, 2 Piece

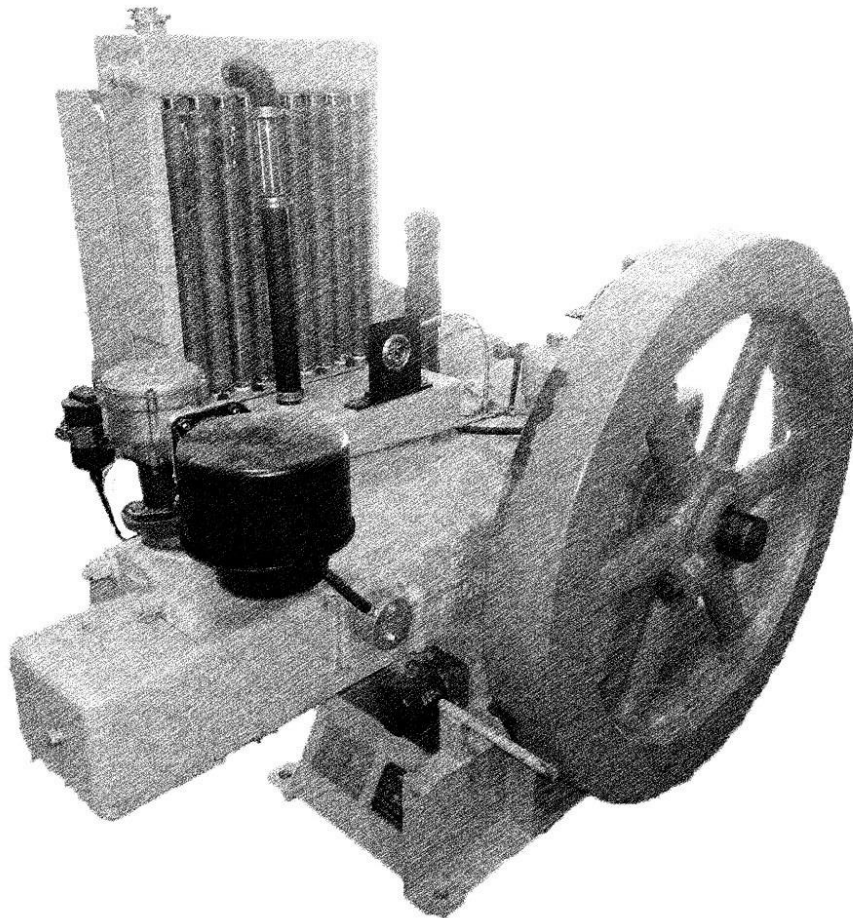
Qty	Part Number	Description
1	OLK-60-CYL	Oil Line Kit
1	OLK-60-GOV	Oil Line Kit
1	SP314HP0	Clutch
1	TGS-6979-C	Overhaul Gasket Set
1	TK-70-230	Carburetor Kit
1	TRK-161	Old Style Governor Kit
1	TRK-162	New Style Governor Kit
1	TRS-120	Piston Ring Set
2	W18	Spark Plug
1	X117B14	Brass Collar
1	YAE-1561-KIT	Mag Drive Kit
1	YT-154-T	Overspeed Switch

<b>GILLETTE LOCATION</b> 100 N HIGHWAY 14-16 PO BOX 3200 GILLETTE, WY 82716 P: (307) 682-5262 F: (307) 682-2240	<b>OKLAHOMA LOCATION</b> 1021 NE 29 <sup>TH</sup> ST OKLAHOMA CITY, OK 73129 P: (405) 602-6927	<b>TIMCOSERVICE.COM</b> INFO@TIMCOSERVICE.COM TOLL FREE: (800) 688-4620	<b>25</b>
--	---	---	-----------



# Arrow Engine

*Model C-46 through C-106*



## Carburetor Kits

TK-46	C-46 Carburetor Kit, 110 Carburetor & Air Horn
TK-66	C-66 Carburetor Kit, 110 Carburetor & Air Horn
TK-66-100	C-66 Carburetor Kit, 100 Carburetor & Air Horn
TK-96	C-96 Carburetor Kit, 210 Carburetor & Air Horn
TK-106-AH	C-106 Carburetor Kit, 210 Carburetor & Air Horn

## Carburetor Related Parts

CA-46	TK-46 Crossover Adapter
CA-66	TK-66 Crossover Adapter
CA-96	TK-96 Crossover Adapter
AH-2312	Air Horn Adapter, 2-5/16" Bore
AH-2625	Air Horn Adapter, 2-5/8" Bore
S-110-E	C-106 Air Cleaner, Oil Bath
TAC-200-KIT	C-46/C-66 Air Cleaner, Dry Element
TAC-250-KIT	C-96/C-106 Air Cleaner, Dry Element

## Head Gaskets

238-46	C-46 Head Gasket
238-46-GHD	C-46 Head Gasket, Heavy Duty Grafoil
238-66	C-66 Head Gasket
238-66-GHD	C-66 Head Gasket, Heavy Duty Grafoil
238-96	C-96 Head Gasket
238-96-GHD	C-96 Head Gasket, Heavy Duty Grafoil
238-106	C-106 Head Gasket
238-106-GHD	C-106 Head Gasket, Heavy Duty Grafoil

## Gasket Sets

TGS-46	C-46 Overhaul Gasket Set
--------	--------------------------

<p><u>GILLETTE LOCATION</u>          100 N HIGHWAY 14-16          PO BOX 3200          GILLETTE, WY 82716          P: (307) 682-5262          F: (307) 682-2240</p>	<p><u>OKLAHOMA LOCATION</u>          1021 NE 29<sup>TH</sup> ST          OKLAHOMA CITY, OK 73129          P: (405) 602-6927</p>	<p><u>TIMCOSERVICE.COM</u>          INFO@TIMCOSERVICE.COM          TOLL FREE: (800) 688-4620</p>	<h1>27</h1>
---	---	--	-------------



TGS-46-HD	C-46 Overhaul Gasket Set, Heavy Duty
TGS-66	C-66 Overhaul Gasket Set
TGS-66-HD	C-66 Overhaul Gasket Set, Heavy Duty
TGS-96	C-96 Overhaul Gasket Set
TGS-96-HD	C-96 Overhaul Gasket Set, Heavy Duty
TGS-106	C-106 Overhaul Gasket Set
TGS-106-HD	C-106 Overhaul Gasket Set, Heavy Duty
TVGS-46	C-46 Valve Grind Gasket Set
TVGS-46-HD	C-46 Valve Grind Gasket Set, Heavy Duty
TVGS-66	C-66 Valve Grind Gasket Set
TVGS-66-HD	C-66 Valve Grind Gasket Set, Heavy Duty
TVGS-96	C-96 Valve Grind Gasket Set
TVGS-96-HD	C-96 Valve Grind Gasket Set, Heavy Duty
TVGS-106	C-106 Valve Grind Gasket Set
TVGS-106-HD	C-106 Valve Grind Gasket Set, Heavy Duty

## Miscellaneous Gaskets

173-46	C-46/66/96/106 Screen Cover Gasket
208-46	C-46/66/96 Governor Housing Gasket
208-106	C-106 Governor Housing Gasket
215-46	C-46/66/96/106 Governor Gasket
22-46	C-46/66 Rear Inspection Cover Gasket
22-96	C-96/106 Rear Inspection Cover Gasket
24-46	C-46 Top Crankcase Cover Gasket
24-66	C-66 Top Crankcase Cover Gasket
24-96	C-96/106 Top Crankcase Cover Gasket
32-46	C-46/66 Compression Relief Cover Gasket
32-96	C-96/106 Compression Relief Cover Gasket
330-11-46	C-46/66/96/106 Magneto Bracket Gasket
330-17-46	C-46/66/96/106 Magneto Drive Gasket
346-46	C-46/66/96/106 Gasket, Water Filler
35-46	C-46 Oil Level Gauge Gasket
498-T-1	C-46/66/96/106 Side Gasket
498-T-2	Fan Hub Gasket Large ID
8-46	Fan Hub Gasket Small ID
ACE-409-46NS	C-46/66/96/106 Gasket-Sediment Bowl

<u>GILLETTE LOCATION</u> 100 N HIGHWAY 14-16 PO BOX 3200 GILLETTE, WY 82716 P: (307) 682-5262 F: (307) 682-2240	<u>OKLAHOMA LOCATION</u> 1021 NE 29 <sup>TH</sup> ST OKLAHOMA CITY, OK 73129 P: (405) 602-6927	<u>TIMCOSERVICE.COM</u> INFO@TIMCOSERVICE.COM TOLL FREE: (800) 688-4620	<b>28</b>
--	---	---	-----------

## Piston Assemblies

76-T-46	C-46 Piston w/ rings, wrist pin, and bushings
76-T-66	C-66 Piston w/ rings, wrist pin, and bushings
76-T-96	C-96 Piston w/ rings, wrist pin, and bushings
76-T-106	C-106 Piston w/ rings, wrist pin, and bushings

## Piston Ring Sets

TRS-46	C-46 Piston Ring Set
TRS-66	C-66 Piston Ring Set
TRS-96	C-96 Piston Ring Set
TRS-106-ARW	C-106 Piston Ring Set

## Wrist Pin & Bushing

78-T-46	C-46 Wrist Pin Bushing
78-T-46-003	C-46 Wrist Pin Bushing .003 oversize
78-T-66	C-66 Wrist Pin Bushing
78-T-66-003	C-66 Wrist Pin Bushing .003 oversize
78-T-66-005	C-66 Wrist Pin Bushing .005 oversize
78-T-96	C-96 Wrist Pin Bushing
78-T-96-003	C-96 Wrist Pin Bushing .003 oversize
78-T-96-005	C-96 Wrist Pin Bushing .005 oversize
78-T-96-010	C-96 Wrist Pin Bushing .010 oversize
79-T-46	C-46 Wrist Pin
79-T-66	C-66 Wrist Pin
79-T-96	C-96 Wrist Pin
79-T-106	C-106 Wrist Pin

## Connecting Rod Bearing & Shims

83-46	C-46 Connecting Rod Bearing
-------	-----------------------------

<b>GILLETTE LOCATION</b> 100 N HIGHWAY 14-16 PO BOX 3200 GILLETTE, WY 82716 P: (307) 682-5262 F: (307) 682-2240	<b>OKLAHOMA LOCATION</b> 1021 NE 29 <sup>TH</sup> ST OKLAHOMA CITY, OK 73129 P: (405) 602-6927	<b>TIMCOSERVICE.COM</b> INFO@TIMCOSERVICE.COM TOLL FREE: (800) 688-4620	<b>29</b>
--	---	---	-----------

83-66	C-66 Connecting Rod Bearing
83-96	C-96 Connecting Rod Bearing
88-66	C-66 Connecting Rod Bearing, Shim
88-96	C-96 Connecting Rod Bearing, Shim

## Camshaft and Camshaft Gear

98-B-46	C-46/66 Camshaft without Gear
98-B-96	C-96 Camshaft without Gear
98-T-46	C-46/66 Camshaft with Gear
98-T-96	C-96 Camshaft with Gear
101-46	Camshaft Gear

## Cylinder Sleeves & Gaskets

TCS-46	C-46 Cylinder Sleeve, Complete
TCS-66	C-66 Cylinder Sleeve, Complete
TCS-96	C-96 Cylinder Sleeve, Complete
TCS-106	C-106 Cylinder Sleeve, Complete
12-T-46	C-46 Cylinder Sleeve O-Ring Set
12-T-66	C-66 Cylinder Sleeve O-Ring Set
12-T-96	C-96 Cylinder Sleeve O-Ring Set
12-T-106	C-106 Cylinder Sleeve O-Ring Set

## Cylinder Heads & Cylinder Head Repair Kits

222-46-T	C-46 Cylinder Head, Complete
222-66-T	C-66 Cylinder Head, Complete
222-96-T	C-96 Cylinder Head, Complete
222-106-T	C-106 Cylinder Head, Complete
222-TRK-46	C-46 Cylinder Head Repair Kit
222-TRK-66	C-66 Cylinder Head Repair Kit
222-TRK-96	C-96 Cylinder Head Repair Kit
222-TRK-106	C-106 Cylinder Head Repair Kit

<b>GILLETTE LOCATION</b> 100 N HIGHWAY 14-16 PO BOX 3200 GILLETTE, WY 82716 P: (307) 682-5262 F: (307) 682-2240	<b>OKLAHOMA LOCATION</b> 1021 NE 29 <sup>TH</sup> ST OKLAHOMA CITY, OK 73129 P: (405) 602-6927	<b>TIMCOSERVICE.COM</b> INFO@TIMCOSERVICE.COM TOLL FREE: (800) 688-4620	<b>30</b>
--	---	---	-----------

## Governor Repair Kit & Accessories

176-TRK-46	C-46/C-66/C-96 Governor Repair Kit
207-46	C-46 Governor Spring, Red
207-66	C-66 Governor Spring, White
207-96	C-96 Governor Spring, Blue
207-106	C-106 Governor Spring

## Rocker Arm Parts

247-T-66	C-66 Rocker Arm Assy
247-T-96	C-96 Rocker Arm Assy
247-TRK-66	Rocker Arm Repair Kit
248-66	Rocker Arm Bracket
248-96	Rocker Arm Bracket
249-66	Rocker Arm Shaft
249-96	Rocker Arm Shaft
253-66	C-66 Rocker Arm Assembly
253-96	C-96/106 Rocker Arm Assembly

## Valves & Valve Covers

T231-46	C-46 Intake/Exhaust Valve
T231-66	C-66 Intake/Exhaust Valve
T231-96	C-96 Intake/Exhaust Valve
T231-106	C-106 Intake/Exhaust Valve
241-T-66	C-66 Valve Cover
241-T-96	C-96 Valve Cover

<b>GILLETTE LOCATION</b> 100 N HIGHWAY 14-16 PO BOX 3200 GILLETTE, WY 82716 P: (307) 682-5262 F: (307) 682-2240	<b>OKLAHOMA LOCATION</b> 1021 NE 29 <sup>TH</sup> ST OKLAHOMA CITY, OK 73129 P: (405) 602-6927	<b>TIMCOSERVICE.COM</b> INFO@TIMCOSERVICE.COM TOLL FREE: (800) 688-4620	<b>31</b>
--	---	---	-----------

## Valve Guides

224-46	C-46 Valve Guide, Standard
224-46-003	C-46 Valve Guide, .003 Oversize
224-46-005	C-46 Valve Guide, .005 Oversize
224-46-010	C-46 Valve Guide, .010 Oversize
224-46-040	C-46 Valve Guide, .040 Oversize
224-66	C-66 Valve Guide, Standard
224-66-003	C-66 Valve Guide, .003 Oversize
224-66-005	C-66 Valve Guide, .005 Oversize
224-66-010	C-66 Valve Guide, .010 Oversize
224-66-040	C-66 Valve Guide, .040 Oversize
224-106	C-106 Valve Guide, Standard

## Valve Seats

228-A-46	C-46 Valve Seat
228-A-66	C-66 Valve Seat
228-A-66-003	C-66 Valve Seat, .003 Oversize
228-A-66-005	C-66 Valve Seat, .005 Oversize
228-A-66-030	C-66 Valve Seat, .030 Oversize
228-A-96	C-96 Valve Seat
228-A-96-003	C-96 Valve Seat, .003 Oversize
228-A-106	C-106 Valve Seat
228-A-106-005	C-106 Valve Seat, .005 Oversize

## Spark Plug Wire Assemblies

330-20-96-T	C-96 Spark Plug Wire
330-20-AB-96-T	C-96 Spark Plug Wire, American Bosch Style

<b>GILLETTE LOCATION</b> 100 N HIGHWAY 14-16 PO BOX 3200 GILLETTE, WY 82716 P: (307) 682-5262 F: (307) 682-2240	<b>OKLAHOMA LOCATION</b> 1021 NE 29 <sup>TH</sup> ST OKLAHOMA CITY, OK 73129 P: (405) 602-6927	<b>TIMCOSERVICE.COM</b> INFO@TIMCOSERVICE.COM TOLL FREE: (800) 688-4620	<b>32</b>
--	---	---	-----------



## Oil Pumps and Oil Pump Repair Kits

124-T-46	C-46/C-66 Oil Pump
124-T-96	C-96/C-106 Oil Pump
124-TRK-46	C-46/C-66 Oil Pump Kit, Old Style
124-TRK-46-003	C-46/C-66 Oil Pump Kit, Old Style, .003 Oversize Shaft
124-TRK-96	C-96/C-106 Oil Pump Kit, Old Style
124-TRK-96-003	C-96/C-106 Oil Pump Kit, Old Style, .003 Oversize Shaft

## Oil Line Kits

OLK-T-66-1	C-66 Basic Oil Line Kit, w/ Fittings
OLK-T-66-2	C-66 Full Oil Line Kit, w/ Fittings
OLK-T-96-1	C-96 Basic Oil Line Kit, w/ Fittings
OLK-T-96-2	C-96 Full Oil Line Kit, w/ Fittings

## Oil Lines & Fittings

OL-16	Governor Tee to Oil Gauge (12.25")
OL-19	Cam Assembly Tee to oil Collector (17")
OL-26	Oil Pump Tee to Bulkhead (11")
OL-29	Oil Pump to Bulkhead (16")
OL-36	Oil Canister to Bulkhead (18")
OL-46	Oil Canister to Bulkhead (11")
OL-A-66	Crankcase Tee to Oil Collector (10.25")
OL-A-96	Crankcase Tee to oil Collect (10.5")
OL-B-66	Rocker Oil Adapter to Cam Assembly Tee (15")
OL-B-96	Rocker Oil Adapter to Cam Assembly Tee (18.5")
OL-C-66	Governor Tee to Crankcase (15")
OL-C-96	Governor Tee to Crankcase (15.5")
OL-D-66	Governor Tee to Oil Gauge (16")
OL-D-96	Governor Tee to Oil Gauge (20.5")
OL-E-66	Water Filler to Water Gauge (18")
OL-E-96	Water Filler to Water Gauge (20.5")
OL-F-66	Oil Pump to Bulkhead (15")

<b>GILLETTE LOCATION</b> 100 N HIGHWAY 14-16 PO BOX 3200 GILLETTE, WY 82716 P: (307) 682-5262 F: (307) 682-2240	<b>OKLAHOMA LOCATION</b> 1021 NE 29 <sup>TH</sup> ST OKLAHOMA CITY, OK 73129 P: (405) 602-6927	<b>TIMCOSERVICE.COM</b> INFO@TIMCOSERVICE.COM TOLL FREE: (800) 688-4620	<b>33</b>
--	---	---	-----------

OL-F-96	Oil Pump Tee to Bulkhead (11.75")
OL-G-96	Oil Canister to Bulkhead (17.5")
OL-H-96	Oil Canister to Bulkhead (9.5")
OL-I-66	Cam Assembly to Bulkhead (18")
OL-K-66	Crankcase Tee to Cam Assembly Tee (5.25")
OL-K-96	Crankcase Tee to Cam Assembly Tee (10.5")
OL-N-96	Cam Assembly to Bulkhead (19")
11381	Flare Tee (45x4R)
16311	Female Flare Connector (46x4)
21215	45° Male Elbow (54x4)
21276	Male Elbow (54x5x4)
26242	Male Flare Connector (48x4)
26309	Male Flare Connector (48x5x4)
31114	90° Male Flare Elbow (49x4)
31174	90° Male Flare Elbow (49x5x4)
36037	Flare Elbow (50x4)

## Throttle Rod Assemblies

309-46-T	C-46 Throttle Rod Assembly
309-66-T	C-66 Throttle Rod Assembly
309-96-T	C-96 Throttle Rod Assembly

## Fan & Fan Hub Assemblies

356-T-66	C-66/C-96 Fan Assembly, Complete
356-66	C-66/C-96 Fan Hub Assembly (No Blades)
356-TRK-66	C-66/C-96 Fan Repair Kit

## Miscellaneous Fan Parts

356-2-66	C-66/C-96 Fan Shaft w/ Bearing Grease Port
356-B-66-T	C-66/C-96 Steel Fan Blade, 6 Blade
LM11949/LM11910	Fan Hub Bearing

<b>GILLETTE LOCATION</b> 100 N HIGHWAY 14-16 PO BOX 3200 GILLETTE, WY 82716 P: (307) 682-5262 F: (307) 682-2240	<b>OKLAHOMA LOCATION</b> 1021 NE 29 <sup>TH</sup> ST OKLAHOMA CITY, OK 73129 P: (405) 602-6927	<b>TIMCOSERVICE.COM</b> INFO@TIMCOSERVICE.COM TOLL FREE: (800) 688-4620	<h1>34</h1>
--	---	---	-------------

## Miscellaneous Parts

23-B-46	Crankcase Breather
232-46	C-46/66 Valve Spring
232-96	C-96/106 Valve Spring
244-BC	Valve Cover Breather Assembly w/ Hose
25-66-T	Safety Fill Cover
250-46	Valve Cover Stud
252-A1-66	Rocker Arm Pin Stud
253-66	C-66 Rocker Arm Assembly
253-96	C-96/106 Rocker Arm Assembly
254-46	Valve Adjusting Screw
254-96	Valve Adjusting Screw
314-P-46	Fuel Pump Cover Plate, w/ Gasket
330-20-46-T	C-46/66 FM Magneto to Spark Plug Wire 45"
330-20-AB-46-T	C-46/66 FM Magneto to Spark Plug Wire 45" American Bosch
367-A-66	C-66 Pilot Bearing Housing
367-A-106	C-106 Pilot Bearing Housing
40-46	Sight Glass
44-46	C-46/66 Oil Seal
44-96	C-96/106 Oil Seal
45X4R	Restrictor Tee
68-T-46	C-46 Crankshaft Main Bearing Set (Cup and Cone)
68-T-66	C-66 Crankshaft Main Bearing Set (Cup and Cone)
68-T-96	C-96 Crankshaft Main Bearing Set (Cup and Cone)
94-A-46	Relief Valve Spring
ACE-400	Oil Level Gauge
FM601-NB	Ignition System 66/96
FMARROW-Stand	Arrow Stand
H100	Grommet
H-66	C-66 Pumper's Friend Radiator
H-106	C-106 Pumper's Friend Radiator
H-7#	Pumper's Friend Radiator Cap
MUF-1	Arrow Muffler

<p><u>GILLETTE LOCATION</u>          100 N HIGHWAY 14-16          PO BOX 3200          GILLETTE, WY 82716          P: (307) 682-5262          F: (307) 682-2240</p>	<p><u>OKLAHOMA LOCATION</u>          1021 NE 29<sup>TH</sup> ST          OKLAHOMA CITY, OK 73129          P: (405) 602-6927</p>	<p><u>TIMCOSERVICE.COM</u>          INFO@TIMCOSERVICE.COM          TOLL FREE: (800) 688-4620</p>	<h2>35</h2>
---	---	--	-------------

## Clutch Assemblies

C107SP5	C-46 Clutch Assembly w/Drive Ring, Clutch Handle, and Pilot Bearing, 1-7/16" Shaft
C107SP5-DB	C-46 Clutch Assembly w/Drive Ring, Clutch Handle, and Pilot Bearing, 1-3/4" Shaft - Double Bearing
C107SP5-PL	C-46 Pilotless Clutch Assembly w/Drive Ring & Clutch Handle
C107SP4	C-66 Old Style Clutch Assembly w/Drive Ring, Clutch Handle, and Pilot Bearing, 1-7/16" Shaft - Double Bearing
C107SP4-DB	C-66 Old Style Clutch Assembly w/Drive Ring, Clutch Handle, and Pilot Bearing, 1-3/4" Shaft - Double Bearing
C107SP4-PL	C-66 Pilotless Clutch Assembly w/Drive Ring & Clutch Handle
C110HP4	C-66 New Style Clutch Assembly w/Drive Ring, Clutch Handle, and Pilot Bearing, 1-7/16" Shaft
C110HP3	C-96 Clutch Assembly w/Drive Ring, Clutch Handle, and Pilot Bearing
SP111HP3	C-106 Clutch Assembly w/Drive Ring, Clutch Handle, and Pilot Bearing

## Clutch Conversion Kits *(Single to Double Bearing)*

7X-850-5	C-46 Conversion Kit w/ 1-7/16" Shaft
----------	--------------------------------------

<b>GILLETTE LOCATION</b> 100 N HIGHWAY 14-16 PO BOX 3200 GILLETTE, WY 82716 P: (307) 682-5262 F: (307) 682-2240	<b>OKLAHOMA LOCATION</b> 1021 NE 29 <sup>TH</sup> ST OKLAHOMA CITY, OK 73129 P: (405) 602-6927	<b>TIMCOSERVICE.COM</b> INFO@TIMCOSERVICE.COM TOLL FREE: (800) 688-4620	<b>36</b>
--	---	---	-----------

## C-46 Overhaul List

Qty.	Part Number	Description
1	12-46	Cylinder Sleeve Gasket
1	124-TRK-46	Oil Pump Kit
1	176-TRK-46	Governor Repair Kit
1	207-46	Governor Spring
1	222-46-T	Head Assembly
1	222-TRK-46	Head Repair Kit
2	224-46	Valve Guide
2	228-A-46	Valve Seat
1	23-B-46	Crankcase Breather
1	238-46-GHD	Head Gasket
2	78-T-46	Wrist Pin Bushing
1	79-46	Piston Pin
1	83-46	Con Rod Bearing
1	C107SP5-DB	Clutch (1-3/4" shaft)
1	OFK-1-T-KIT	Oil Filter Kit
2	T231-46	Valve
1	TAC-200-KIT	Air Cleaner
1	TCS-46	Cylinder Sleeve
1	TGS-46	Overhaul Gasket Set
1	TK-46	Carburetor Kit
1	TRS-46	Piston Ring Set
1	TVGS-46	Valve Grind Gaskets

ARROW

<p><u>GILLETTE LOCATION</u>            100 N HIGHWAY 14-16            PO BOX 3200            GILLETTE, WY 82716            P: (307) 682-5262            F: (307) 682-2240</p>	<p><u>OKLAHOMA LOCATION</u>            1021 NE 29<sup>TH</sup> ST            OKLAHOMA CITY, OK 73129            P: (405) 602-6927</p>	<p><u>TIMCOSERVICE.COM</u>            INFO@TIMCOSERVICE.COM            TOLL FREE: (800) 688-4620</p>	<p>37</p>
---	---	--	-----------

## C-66 Overhaul List

Qty.	Part Number	Description
1	12-66	Cylinder Sleeve Gasket
1	124-TRK-46	Oil Pump Kit
1	176-TRK-46	Governor Repair Kit
1	207-66	Governor Spring
1	222-66-T	Cylinder Head
1	222-TRK-66	Head Repair Kit
2	224-66	Valve Guide
2	228-A-66	Valve Seat
1	23-B-46	Crankcase Breather
1	238-66-GHD	Head Gasket
1	241-T-66	Valve Cover
1	356-T-66	Fan Assembly
1	356-TRK-66	Fan Hub Repair Kit
1	356-66	Fan Hub Assembly
1	76-T-66	Piston Assembly
2	78-T-66	Wrist Pin Bushing
1	79-T-66	Piston Pin
1	83-66	Con Rod Bearing
2	88-66	Con Rod Shim
1	C107SP4-DB	Clutch (1-7/16" Shaft)
1	C110HP4	Clutch (1-3/4" Shaft)
1	OFK-1-T-KIT	Oil Filter Kit
2	OLK-T-66-1	Basic Oil Line Kit
1	OLK-T-66-2	Full Oil Line Kit
2	T231-66	Valve
1	TAC-200-KIT	Air Cleaner
1	TCS-66	Cylinder Sleeve
1	TGS-66	Overhaul Gasket Set
1	TK-66	Carburetor Kit
1	TRS-66	Piston Ring Set
1	TVGS-66	Valve Grind Gaskets

<b>GILLETTE LOCATION</b> 100 N HIGHWAY 14-16 PO BOX 3200 GILLETTE, WY 82716 P: (307) 682-5262 F: (307) 682-2240	<b>OKLAHOMA LOCATION</b> 1021 NE 29 <sup>TH</sup> ST OKLAHOMA CITY, OK 73129 P: (405) 602-6927	<b>TIMCOSERVICE.COM</b> INFO@TIMCOSERVICE.COM TOLL FREE: (800) 688-4620	<b>38</b>
--	---	---	-----------

## C-96 Overhaul List

Qty.	Part Number	Description
1	12-96	Cylinder Sleeve Gasket
1	124-TRK-96	Oil Pump Kit
1	176-TRK-46	Governor Repair Kit
1	207-96	Governor Spring
1	222-96-T	Cylinder Head
1	222-TRK-96	Head Repair Kit
2	224-66	Valve Guide
2	228-A-96	Valve Seat
1	23-B-46	Crankcase Breather
1	238-96-GHD	Head Gasket
1	241-T-96	Valve Cover
1	330-20-96-T	Spark Plug Wire
1	356-T-66	Fan Assembly
1	356-TRK-66	Fan Hub Repair Kit
1	356-66	Fan Hub Assembly
1	76-T-96	Piston Assembly
2	78-T-96	Wrist Pin Bushing
1	79-T-96	Piston Pin
1	83-96	Con Rod Bearing
2	88-96	Con Rod Shim
1	C110HP3	Clutch
1	OFK-1-T-KIT	Oil Filter Kit
1	OLK-T-96-1	Basic Oil Line Kit
1	OLK-T-96-2	Full Oil Line Kit
2	T231-96	Valve
1	TAC-250-KIT	Air Cleaner
1	TCS-96	Cylinder Sleeve
1	TGS-96	Overhaul Gasket Set
1	TK-96	Carburetor Kit
1	TRS-96	Piston Ring Set
1	TVGS-96	Valve Grind Gaskets

<b>GILLETTE LOCATION</b> 100 N HIGHWAY 14-16 PO BOX 3200 GILLETTE, WY 82716 P: (307) 682-5262 F: (307) 682-2240	<b>OKLAHOMA LOCATION</b> 1021 NE 29 <sup>TH</sup> ST OKLAHOMA CITY, OK 73129 P: (405) 602-6927	<b>TIMCOSERVICE.COM</b> INFO@TIMCOSERVICE.COM TOLL FREE: (800) 688-4620	<b>39</b>
--	---	---	-----------

## C-106 Overhaul List

Qty.	Part Number	Description
1	12-106	Cylinder Sleeve Gasket
1	124-TRK-96	Oil Pump Kit
2	224-106	Valve Guide
1	23-B-46	Crankcase Breather
1	222-106-T	Head Assembly
1	238-106-GHD	Head Gasket
1	76-T-106	Piston Assembly
1	79-T-106	Piston Pin
1	OFK-1-T-KIT	Oil Filter Kit
1	SP111HP3	Clutch
1	TAC-250-KIT	Air Cleaner
1	TCS-106	Cylinder Sleeve
1	TGS-106	Overhaul Gasket Set
1	TK-106-AH	Carburetor Kit
1	TRS-106-AH	Piston Ring Set
1	TVGS-106	Valve Grind Gaskets

# ARROW

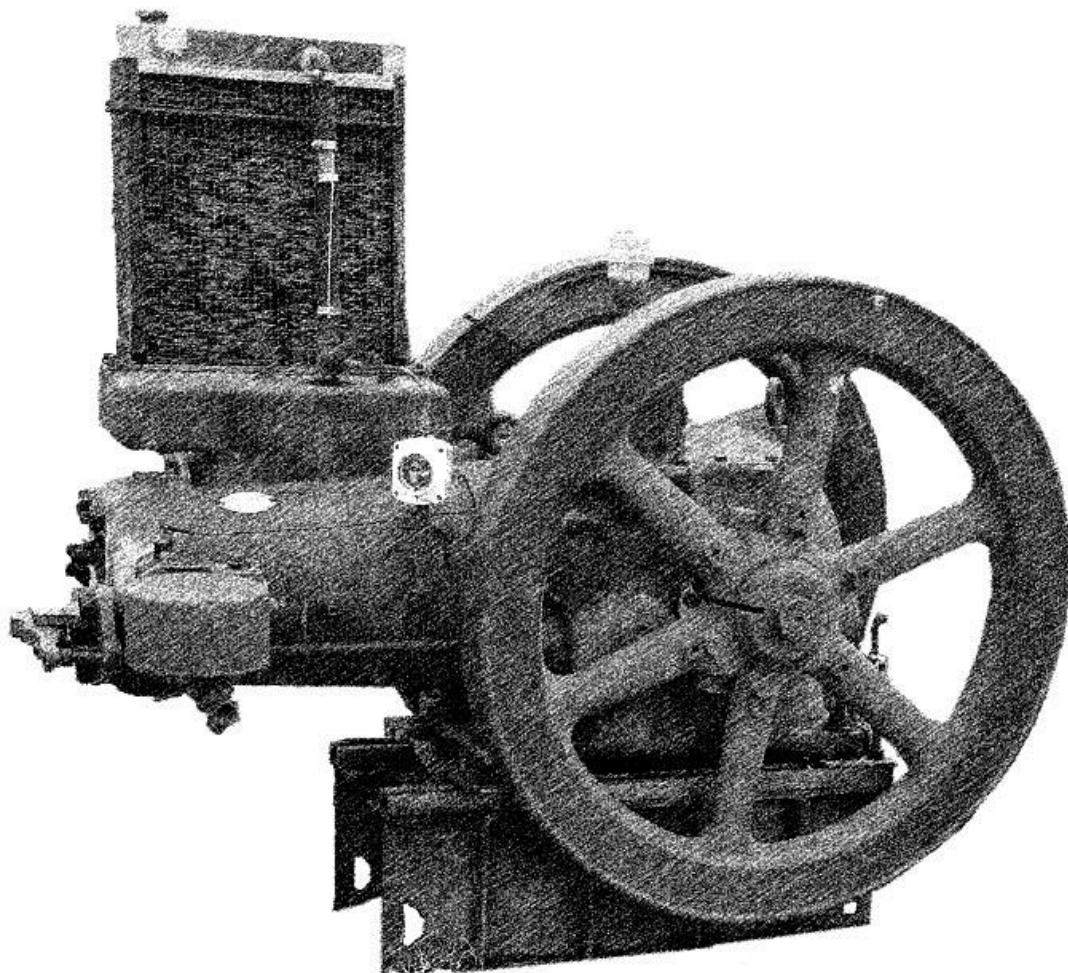
<p><u>GILLETTE LOCATION</u>            100 N HIGHWAY 14-16            PO BOX 3200            GILLETTE, WY 82716            P: (307) 682-5262            F: (307) 682-2240</p>	<p><u>OKLAHOMA LOCATION</u>            1021 NE 29<sup>TH</sup> ST            OKLAHOMA CITY, OK 73129            P: (405) 602-6927</p>	<p><u>TIMCOSERVICE.COM</u>            INFO@TIMCOSERVICE.COM            TOLL FREE: (800) 688-4620</p>	<p><b>40</b></p>
---	---	--	------------------





# Fairbanks-Morse

*Model ZC-118 through ZC-739*



## Carburetor Kits

TK-118/208	ZC-118/208 Carburetor Kit, 110 Carburetor & Adapter
TK-346-503	ZC-346/503 Carburetor Kit, 210 Carburetor & Adapter

## Carburetor Related Parts

204-118	ZC-118/208 Butterfly Valve Shaft 1-1/4"
204-A-118	ZC-118 Butterfly Valve Shaft 1-1/8"
204-A-208	ZC-208 Butterfly Valve Shaft 1-1/8"
204-A-346	ZC-346 Butterfly Valve Shaft
204-A-503	ZC-503 Butterfly Valve Shaft
206-118	ZC-118/208 Butterfly Valve Shaft Lever
206-346	ZC-346/503/739 Butterfly Valve Shaft Lever
249-118/208	Carburetor to Head Gasket
259-F-118	ZC-118/208 Carburetor Elbow
326-118	ZC-118/208 Butterfly Valve Shaft Spring
B-203-118	ZC-118 Butterfly Valve 1-1/4"
B-203-A-118	ZC-118 Butterfly Valve 1-1/8"
B-203-A-208	ZC-208 Butterfly Valve 1-3/8"
B-203-AC-208	ZC-208 Butterfly Complete Valve
B-203-346	ZC-346 Butterfly Valve
B-203-503	ZC-503 Butterfly Valve
B-326-346	ZC-346 Butterfly Shaft Spring
C-202-346	ZC-346 Butterfly Valve Casing
C-202-503	ZC-503 Butterfly Valve Casing
AH-2312	Air Horn Adapter, 2.312" bore
AH-2625	Air Horn Adapter, 2.625" bore
T-118-208	ZC-118/208 Carburetor Elbow Adapter
T-346-503	ZC-356/503 Carburetor Elbow Adapter
T-739FA	ZC-739 Carburetor Adapter
TAC-200-KIT	Air Cleaner Assembly with Elbow
TAC-250-KIT	Air Cleaner Assembly with Elbow
TAC-300-KIT	Air Cleaner Assembly with Elbow

<b>GILLETTE LOCATION</b> 100 N HIGHWAY 14-16 PO BOX 3200 GILLETTE, WY 82716 P: (307) 682-5262 F: (307) 682-2240	<b>OKLAHOMA LOCATION</b> 1021 NE 29 <sup>TH</sup> ST OKLAHOMA CITY, OK 73129 P: (405) 602-6927	<b>TIMCOSERVICE.COM</b> INFO@TIMCOSERVICE.COM TOLL FREE: (800) 688-4620	<b>42</b>
--	---	---	-----------

## Clutch Parts

10-AMMA	Key Round End
4-AOF14	Shaft
6-AMMA	Round End Key
GG8-T-KIT	Sliding Collar Assembly with Handwheel
GG8-T-HW	Handwheel
7-AOF10-T	Sliding Collar

Handwheel and collar fit all Fairbanks-Morse ZC engines.

## Head Gaskets

190-118	ZC-118 Head Gasket
190-118-GHD	ZC-118 Head Gasket, Heavy Duty Grafoil
190-208	ZC-208 Head Gasket
190-208-GHD	ZC-208 Head Gasket, Heavy Duty Grafoil
190-346	ZC-346 Head Gasket
190-346-GHD	ZC-346 Head Gasket, Heavy Duty Grafoil
190-503	ZC-503 Head Gasket
190-503-GHD	ZC-503 Head Gasket, Heavy Duty Grafoil
190-739	ZC-739 Head Gasket
190-739-GHD	ZC-739 Head Gasket, Heavy Duty Grafoil

## Gasket Sets

TGS-208	ZC-208 Overhaul Gasket Set
TGS-346	ZC-346 Overhaul Gasket Set
TGS-503	ZC-503 Overhaul Gasket Set

For a complete list of Fairbanks Morse gaskets, please see Gaskets section of catalog.

## Governor Parts

222-346	ZC-346/503/739 Governor Speed Regulator Spring
---------	--

<p><u>GILLETTE LOCATION</u>          100 N HIGHWAY 14-16          PO BOX 3200          GILLETTE, WY 82716          P: (307) 682-5262          F: (307) 682-2240</p>	<p><u>OKLAHOMA LOCATION</u>          1021 NE 29<sup>TH</sup> ST          OKLAHOMA CITY, OK 73129          P: (405) 602-6927</p>	<p><u>TIMCOSERVICE.COM</u>          INFO@TIMCOSERVICE.COM          TOLL FREE: (800) 688-4620</p>	<p><b>43</b></p>
---	---	--	------------------

33-118	ZC-118/208 Governor Drag Spring
33-346	ZC-346/503 Governor Drag Spring
34-118	ZC-118/208 Cam Rocker Roller
35-118	ZC-118/208 Exhaust Rocker Roller Pin
35-346	ZC-346/503/739 Exhaust Rocker Roller Pin with Cotter
35-A-346	ZC-346/503/739 Exhaust Rocker Roller Pin
3729-118	ZC-118/208 Governor Lever Shaft Roller
3729-346	ZC-346/503/739 Governor Lever Shaft Roller
405-A-118	ZC-118/208 Governor Pull Rod Ball Joint
405-A-346	ZC-346/503/739 Governor Pull Rod Ball Joint
48-118	ZC-118/208 Governor Pinion
48-346	ZC-346/503 Governor Pinion
505-346	ZC-346 Governor Spring Clevis
79-118	ZC-118/208 Clevis Pin, New Style
80-118	ZC-118/208 Governor Sleeve Pin
81-118	ZC-118/208 Governor Head
81-T-118	ZC-118/208 Governor Complete Less Housing
81-346	ZC-346/503/739 Governor Spindle
82-118	ZC-118/208 Governor Weight
82-346	ZC-346/503/739 Governor Weight
83-A-118	ZC-118/208 Governor Lever
83-A-346	ZC-346/503/739 Governor Lever
85-346	ZC-346/503/739 Governor Lever Shaft Assembly
86-346	ZC-346/503/739 Governor Sleeve Pin
865-346	ZC-346/503/739 Governor Housing with Dowel
866-118	ZC-118/208 Flange Bushing
867-118	ZC-118/208 Bushing
868-118	ZC-118/208 Governor Head Thrust Washer
A-865-118	ZC-118 Governor Housing Assembly

## Wrist Pin & Bushing

7-118	ZC-118 Wrist Pin
7-208	ZC-208 Wrist Pin
7-346	ZC-346/503 Wrist Pin
17-208	ZC-208 Wrist Pin Bushing, Standard
17-208-003	ZC-208 Wrist Pin Bushing, .003 oversize

<p><u>GILLETTE LOCATION</u>          100 N HIGHWAY 14-16          PO BOX 3200          GILLETTE, WY 82716          P: (307) 682-5262          F: (307) 682-2240</p>	<p><u>OKLAHOMA LOCATION</u>          1021 NE 29<sup>TH</sup> ST          OKLAHOMA CITY, OK 73129          P: (405) 602-6927</p>	<p><u>TIMCOSERVICE.COM</u>          INFO@TIMCOSERVICE.COM          TOLL FREE: (800) 688-4620</p>	<p><b>44</b></p>
---	---	--	------------------



17-346	ZC-346/503 Wrist Pin Bushing, Standard
17-346-003	ZC-346/503 Wrist Pin Bushing, .003 oversize

## Connecting Rod & Pistons

176-118	ZC-118 Connecting Rod Bearing
176-208	ZC-208 Connecting Rod Bearing
176-346	ZC-346 Connecting Rod Bearing
176-503	ZC-503 Connecting Rod Bearing
176-739	ZC-739 Connecting Rod Bearing
32-346	ZC-346 Connecting Rod Bolt
32-503	ZC-503/739 Connecting Rod Bolt
5415-118	ZC-118 Connecting Oil Rod Thrower
5415-208	ZC-208 Connecting Oil Rod Thrower
5415-346	ZC-346 Connecting Oil Rod Thrower
5415-503	ZC-503 Connecting Oil Rod Thrower
T-110-118	ZC-118 Connecting Rod Shim Pack
T-110-208	ZC-208 Connecting Rod Shim Pack
T-110-346	ZC-346 Connecting Rod Shim Pack
T-110-503	ZC-503 Connecting Rod Shim Pack
T-110-739	ZC-739 Connecting Rod Shim Pack
A-71-118	ZC-118/208 Piston Pin Lock Pin with Cotter
71-346	ZC-346/503/739 Piston Pin Dowel Pin
A-110-118	ZC-118 Shim
A-110-208	ZC-208 Shim
A-150-208	ZC-208 Connecting Rod Bolt
B-110-118	ZC-118 Shim
B-110-208	ZC-208 Shim
B-110-503	ZC-503 Shim
B-5-118	ZC-118 Piston, Bare
B-5-208	ZC-208 Piston, Bare
C-110-503	ZC-503 Shim
D-110-503	ZC-503 Shim

## Piston Ring Sets

TRS-118-STD	ZC-118 Piston Ring Set, Standard
-------------	----------------------------------

<b>GILLETTE LOCATION</b> 100 N HIGHWAY 14-16 PO BOX 3200 GILLETTE, WY 82716 P: (307) 682-5262 F: (307) 682-2240	<b>OKLAHOMA LOCATION</b> 1021 NE 29 <sup>TH</sup> ST OKLAHOMA CITY, OK 73129 P: (405) 602-6927	<b>TIMCOSERVICE.COM</b> INFO@TIMCOSERVICE.COM TOLL FREE: (800) 688-4620	45
--	---	---	----

TRS-208-STD	ZC-208 Piston Ring Set, Standard
TRS-208-010	ZC-208 Piston Ring Set, .010 Oversize
TRS-208-020	ZC-208 Piston Ring Set, .020 Oversize
TRS-346-STD	ZC-346 Piston Ring Set, Standard
TRS-346-010	ZC-346 Piston Ring Set, .010 Oversize
TRS-346-020	ZC-346 Piston Ring Set, .020 Oversize
TRS-503-STD	ZC-503 Piston Ring Set, Standard
TRS-739-STD	ZC-739 Piston Ring Set, Standard

## Cooling Parts

1124-A-118	ZC-118 Core Radiator with Gasket
1124-A-208	ZC-208 Core Radiator with Gasket
1124-A-346	ZC-346 Core Radiator with Gasket
1124-A-503	ZC-503 Core Radiator with Gasket
2800-1-118	ZC-118 Flat Strap 1X5.5
2800-2-118	ZC-118 Flat Strap 1X7
3726-LD-346	ZC-346/503 Fan Assembly
498-P	Fan Hub Grease Retainer
6213-D	Oil Retainer
6783D	Fan Bearing Cup & Cone
7804-D	ZC-118/208 Spindle
7F-118	Radiator Core Felt
8006-LD-208	Blade Assembly

## Crankcase Parts

23-118	ZC-118 Main Bearing Old Style
23-B-118	ZC-118 Bearing Cup
23-C-118	ZC-118 Bearing Cone
23-D-118	ZC-118 Bearing Cone
23-T-346	ZC-346 Main Bearing
23-T-503	ZC-503 Main Bearing
265-118	ZC-118/208 Starter Crank Pawl
266-118	ZC-118/208 Starter Crank Pawn Pin
267-118	ZC-118/208 Starter Crank Pawn Spring
29-A-118	ZC-118 Crankshaft Pinion (New Style ID 2")

<b>GILLETTE LOCATION</b> 100 N HIGHWAY 14-16 PO BOX 3200 GILLETTE, WY 82716 P: (307) 682-5262 F: (307) 682-2240	<b>OKLAHOMA LOCATION</b> 1021 NE 29 <sup>TH</sup> ST OKLAHOMA CITY, OK 73129 P: (405) 602-6927	<b>TIMCOSERVICE.COM</b> INFO@TIMCOSERVICE.COM TOLL FREE: (800) 688-4620	<b>46</b>
--	---	---	-----------

308-118	ZC-118/208 Governor Spring
9556-118	ZC-118 Oil Seal
9556-208	ZC-208 Oil Seal
9556-346	ZC-346 Oil Seal
9556-503	ZC-503 Oil Seal
A-607-A-503	ZC-503 Fan Drive Sheave
B-126-208	ZC-208 Main Bearing Shim

## Rocker Arm and Cam Parts

1009-346	ZC-346/503 Rocker Arm Bushing
128-A-346	ZC-346/503 Cam
1608-B	Rocker Arm Pin Grease Zerk
1A-3/4	Rocker Arm Set Screw Lockwasher
27A-3/4	Rocker Arm Set Screw Nut
28-A-118	ZC-118/208 Cam Gear with Cam
28-A-346	ZC-346/503 Cam Gear with Cam
28-739	ZC-739 Cam Gear with Cam
31-346	ZC-346/503 Cam Gear Adjusting Washer
34-118	Cam Gear Rocker Roller
35-118	Exhaust Rocker Roller Pin
35-A-346	Cam Roller Pin with Cotter
36-T-118	Exhaust Rod Complete
36-T-208	Exhaust Rod Complete
36-T-346	Exhaust Rod Complete
36-T-503	Exhaust Rod Complete
39-T-118	ZC-118/208 Rocker Arm Complete
39-B-118	ZC-118/208 Rocker Arm Bushing
39-T-346	ZC-346/503 Rocker Arm with Bushing
39-B-739	ZC-739 Rocker Arm with Needle Bearing
40-118	ZC-118/208 Rocker Arm Pin
40-A-346	ZC-346/503 Rocker Arm Pin
41-208	ZC-208 Rocker Arm Bracket
41-346	ZC-346/503 Rocker Arm Bracket
50-C-118	ZC-118/208 Cam Rocker Complete
50-346	ZC-346/503/739 Cam Rocker
50-T-346	ZC-346/503/739 Cam Rocker Complete

<b>GILLETTE LOCATION</b> 100 N HIGHWAY 14-16 PO BOX 3200 GILLETTE, WY 82716 P: (307) 682-5262 F: (307) 682-2240	<b>OKLAHOMA LOCATION</b> 1021 NE 29 <sup>TH</sup> ST OKLAHOMA CITY, OK 73129 P: (405) 602-6927	<b>TIMCOSERVICE.COM</b> INFO@TIMCOSERVICE.COM TOLL FREE: (800) 688-4620	<b>47</b>
--	---	---	-----------

552-346	ZC-346 Rocker Arm Roller
553-A-346	ZC-346 Exhaust Roller Rocker
58-A-118	ZC-118/208 Exhaust Rocker Arm Shaft
911-346	ZC-346 Rocker Arm Bracket Bushing
911-SB-346	ZC-346 Rocker Arm Bracket Bushing, Split
A-2244-118	ZC-118 Collar
A-2244-346	ZC-346 Collar
A-31-A-118	ZC-118 Cam Gear Shaft Collar
B-1612-X-739	ZC-739 Rocker Arm Needle Bearing
B-31-118	ZC-118 Washer

## Valve Kits

9-BC-118	ZC-118 Intake Valve Kit
9-BC-208	ZC-208 Intake Valve Kit
9-AC-346	ZC-346 Intake Valve Kit
9-AC-503	ZC-503 Intake Valve Kit
10-C-118	ZC-118 Exhaust Valve Kit
10-C-208	ZC-208 Exhaust Valve Kit
10-C-346	ZC-346 Exhaust Valve Kit
10-C-503	ZC-503 Exhaust Valve Kit
3-BC-TRK-118	ZC-118 Head Repair Kit
3-BC-TRK-208	ZC-208 Head Repair Kit, Two Valve
3-DC-TRK1-346	ZC-346 Head Repair Kit, Two Valve
3-DC-TRK2-346	ZC-346 Head Repair Kit, Three Valve
3-DC-TRK1-503	ZC-503 Head Repair Kit, Two Valve
3-DC-TRK2-503	ZC-503 Head Repair Kit, Three Valve
3-DC-TRK2-739	ZC-739 Head Repair Kit, Two Valve

## Miscellaneous Valve Parts

9-B-118	ZC-118 Intake Valve
9-B-208	ZC-208 Intake Valve
9-A-346	ZC-346 Intake Valve
9-A-503	ZC-503 Intake Valve
10-118	ZC-118 Exhaust Valve

<b>GILLETTE LOCATION</b> 100 N HIGHWAY 14-16 PO BOX 3200 GILLETTE, WY 82716 P: (307) 682-5262 F: (307) 682-2240	<b>OKLAHOMA LOCATION</b> 1021 NE 29 <sup>TH</sup> ST OKLAHOMA CITY, OK 73129 P: (405) 602-6927	<b>TIMCOSERVICE.COM</b> INFO@TIMCOSERVICE.COM TOLL FREE: (800) 688-4620	<b>48</b>
--	---	---	-----------



10-208	ZC-208 Exhaust Valve
10-346	ZC-346 Exhaust Valve
10-503	ZC-503 Exhaust Valve
10-739	ZC-739 Exhaust Valve
11-118/208	ZC-118/208 Exhaust Spring Collar
11-346/503	ZC-346/503 Exhaust Spring Collar
11-739	ZC-739 Exhaust Spring Collar
120-118/208	ZC-118/208 Intake Valve Drag Spring
120-346/503	ZC-346/503 Intake Valve Drag Spring
121-A-346/503	ZC-346/503 Intake Valve Drag Spring Collar
121-B-118/208	ZC-118/208 Intake Valve Drag Spring Collar
310-118/208	ZC-118/208 Intake Valve Spring
310-346	ZC-346 Intake Valve Spring
310-503	ZC-503 Intake Valve Spring
317-118	ZC-118 Exhaust Valve Spring
317-208	ZC-208 Exhaust Valve Spring
317-346/503	ZC-346/503 Exhaust Valve Spring
317-739	ZC-739 Exhaust Valve Spring
617-118/208	ZC-118/208 Intake Valve Bumper Spring
617-346/503	ZC-346/503 Intake Valve Bumper Spring
7963-346	ZC-346 Valve Seat
7963-346-005	ZC-346 Valve Seat, .005 Oversize
7963-503	ZC-503 Valve Seat
7963-739	ZC-739 Valve Seat
87-118	ZC-118 Valve Seat
87-118-003	ZC-118 Valve Seat, .003 Oversize
87-118-005	ZC-118 Valve Seat, .005 Oversize
87-118-010	ZC-118 Valve Seat, .010 Oversize
87-208	ZC-208 Valve Seat

## Valve Guides

287-118	ZC-118/208 Exhaust Valve Guide, Standard
287-118-003	ZC-118/208 Exhaust Valve Guide, .003 Oversize
287-118-005	ZC-118/208 Exhaust Valve Guide, .005 Oversize
287-118-010	ZC-118/208 Exhaust Valve Guide, .010 Oversize
287-118-040	ZC-118/208 Exhaust Valve Guide, .040 Oversize

<b>GILLETTE LOCATION</b> 100 N HIGHWAY 14-16 PO BOX 3200 GILLETTE, WY 82716 P: (307) 682-5262 F: (307) 682-2240	<b>OKLAHOMA LOCATION</b> 1021 NE 29 <sup>TH</sup> ST OKLAHOMA CITY, OK 73129 P: (405) 602-6927	<b>TIMCOSERVICE.COM</b> INFO@TIMCOSERVICE.COM TOLL FREE: (800) 688-4620	<b>49</b>
--	---	---	-----------

287-346	ZC-346/503 Exhaust Valve Guide, Standard
287-346-003	ZC-346/503 Exhaust Valve Guide, .003 Oversize
287-346-005	ZC-346/503 Exhaust Valve Guide, .005 Oversize
287-346-010	ZC-346/503 Exhaust Valve Guide, .010 Oversize
287-346-040	ZC-346/503 Exhaust Valve Guide, .040 Oversize
287-739	ZC-739 Exhaust Valve Guide, Standard
287-739-003	ZC-739 Exhaust Valve Guide, .003 Oversize
287-739-005	ZC-739 Exhaust Valve Guide, .005 Oversize
287-739-010	ZC-739 Exhaust Valve Guide, .010 Oversize
287-739-040	ZC-739 Exhaust Valve Guide, .040 Oversize
288-118	ZC-118/208 Intake Valve Guide, Standard
288-118-003	ZC-118/208 Intake Valve Guide, .003 Oversize
288-118-005	ZC-118/208 Intake Valve Guide, .005 Oversize
288-118-010	ZC-118/208 Intake Valve Guide, .010 Oversize
288-118-040	ZC-118/208 Intake Valve Guide, .040 Oversize
288-346	ZC-346/503 Intake Valve Guide, Standard
288-346-003	ZC-346/503 Intake Valve Guide, .003 Oversize
288-346-005	ZC-346/503 Intake Valve Guide, .005 Oversize
288-346-010	ZC-346/503 Intake Valve Guide, .010 Oversize
288-346-040	ZC-346/503 Intake Valve Guide, .040 Oversize

## Spark Plug Wire Assembly

752-118	ZC-208 Spark Plug Wire Assembly
752-208	ZC-208 Spark Plug Wire Assembly
752-346	ZC-346 Spark Plug Wire Assembly
752-503	ZC-503 Spark Plug Wire Assembly

## Clutch Drive Plates

14E6	Clutch Drive Plate for #6 Clutch
14E10	Clutch Drive Plate for #10 Clutch

<b>GILLETTE LOCATION</b> 100 N HIGHWAY 14-16 PO BOX 3200 GILLETTE, WY 82716 P: (307) 682-5262 F: (307) 682-2240	<b>OKLAHOMA LOCATION</b> 1021 NE 29 <sup>TH</sup> ST OKLAHOMA CITY, OK 73129 P: (405) 602-6927	<b>TIMCOSERVICE.COM</b> INFO@TIMCOSERVICE.COM TOLL FREE: (800) 688-4620	<b>50</b>
--	---	---	-----------

## Oil-Less Bronze Bushings

13-A6	Oil-less Bronze Bushing
13-A10	Oil-less Bronze Bushing

## Fan & Fan Hub Assemblies

1141-118	ZC-118/208 Fan Hub Assembly
1141-346	ZC-346/503 Fan Hub Assembly
1141-T-346	ZC-346/503 Fan Hub Assembly, with Blades

## Flywheel Ignition Kits

FM601-NB	FM208 Flywheel Ignition /w Bracket and Wiring Harness
----------	---

## Push Rod Assemblies

36-T-346	ZC-346 Exhaust Push Rod
36-T-503	ZC-503 Exhaust Push Rod
36-739-T	ZC-739 Exhaust Push Rod
TK-36-118	ZC-118/208 Push Rod Seal Kit
TK-36-346	ZC-346/503 Push Rod Seal Kit
55-118	ZC-118/208 Push Rod Cap
55-346-T	ZC-346/503/739 Push Rod Cap

## Throttle Assemblies

205-T-118	ZC-118 Throttle Rod Assembly
205-T-208	ZC-208 Throttle Rod Assembly
205-T-346	ZC-346 Throttle Rod Assembly
205-T-503	ZC-503 Throttle Rod Assembly

<b>GILLETTE LOCATION</b> 100 N HIGHWAY 14-16 PO BOX 3200 GILLETTE, WY 82716 P: (307) 682-5262 F: (307) 682-2240	<b>OKLAHOMA LOCATION</b> 1021 NE 29 <sup>TH</sup> ST OKLAHOMA CITY, OK 73129 P: (405) 602-6927	<b>TIMCOSERVICE.COM</b> INFO@TIMCOSERVICE.COM TOLL FREE: (800) 688-4620	<b>51</b>
--	---	---	-----------



## Miscellaneous Parts

233-BC	Breather Assembly
298-118	ZC-118/208 Name Plate
298-346	ZC-346/503/739 Name Plate
ACE-299-118	Oil Sight Glass Assembly
ASP-2	Breather Auxiliary
ASP-3-N	Water Filler Nipple

FAIRBANKS MORSE

<u>GILLETTE LOCATION</u> 100 N HIGHWAY 14-16 PO BOX 3200 GILLETTE, WY 82716 P: (307) 682-5262 F: (307) 682-2240	<u>OKLAHOMA LOCATION</u> 1021 NE 29 <sup>TH</sup> ST OKLAHOMA CITY, OK 73129 P: (405) 602-6927	<u>TIMCOSERVICE.COM</u> INFO@TIMCOSERVICE.COM TOLL FREE: (800) 688-4620	52
--	---	---	----



IMPCO



## Carburetors

CA100-12	100 Carburetor, 1.5" SAE Flange, 2.312" Air Horn
110-12	110 Carburetor, 1.5" SAE Flange, 2.312" Air Horn
200-4	200 Carburetor, 1.75" SAE Flange, 2.625" Air Horn
200-6	200 Carburetor, 2" SAE Flange, 3" Air Horn
200DM-2	210 Carburetor, 1.75" SAE Flange, 2.625" Air Horn
210-4	210 Carburetor, 1.75" SAE Flange, 2.625" Air Horn
210-6	210 Carburetor, 2" SAE Flange, 3" Air Horn
425-60	425 Carburetor, 4" Air Horn

## Mixer Assemblies

CA100M-4	100 Mixer Assembly, 2.312" Air Horn
110M-4	110 Mixer Assembly, 2.312" Air Horn
200M-1	200 Mixer Assembly, 2.625" Air Horn
200M-2	200 Mixer Assembly, 3" Air Horn
200DM-2	200 Mixer Assembly, 3" Air Horn. Silicone Diaphragm
210M-1	210 Mixer Assembly, 2.625" Air Horn
225M-2	225 Mixer Assembly

## Carburetor Parts

200AV	2" Air Vent Hose
258AV	2-5/8" Air Vent Hose
300AV	3" Air Vent Hose
400AV	4" Air Vent Hose
A110-DP-2	110 Dashpot Assembly
A210-DP-2	210 Dashpot Assembly
AA2-15	4" Air Horn for CA425 Carburetor
AB1-54	Fuel Valve
AD1-28-1	425 Idler Diaphragm, with Gasket
AL1-7-1	Throttle Lever, 2-5/16" Long
AL1-8-2	Throttle Stop Assembly, .313" ID

<b>GILLETTE LOCATION</b> 100 N HIGHWAY 14-16 PO BOX 3200 GILLETTE, WY 82716 P: (307) 682-5262 F: (307) 682-2240	<b>OKLAHOMA LOCATION</b> 1021 NE 29 <sup>TH</sup> ST OKLAHOMA CITY, OK 73129 P: (405) 602-6927	<b>TIMCOSERVICE.COM</b> INFO@TIMCOSERVICE.COM TOLL FREE: (800) 688-4620	<b>54</b>
--	---	---	-----------



AL1-9-1	Throttle Lever, 2-7/8" Long
AL1-10	Throttle Stop Assembly, .375" ID
AL1-12-1	Throttle Lever, 3-3/4" Long
AS2-50-2	Return Spring
AS3-10	Throat Adapter (110/110 Carburetors)
AS3-21	210 Air Gas Valve Assembly
AS3-22	110 Air Gas Valve Assembly
AS3-45	Throat Spacer (200/210 Carburetors)
AT2-16-1	Throat Assembly, 1.25" SAE to 1.50" SAE
AT2-25	Impco Throttle Body
AT2-3	Throat Assembly, 1.25" SAE
AT2-4-1	Throat Assembly, 1.50" SAE
AT2-4-3	Throat Assembly 1.75" SAE
AT2-5	Throat Assembly, 1.75" SAE
AT2-6	Throat Assembly, 2" SAE
AV1-12-2	200 Diaphragm Assembly
AV1-12-3	200 Diaphragm Assembly, with Check Valve
AV1-14-3	100 Diaphragm Assembly
AV1-16-2	425 Diaphragm Assembly
AV1-17-2	600 Diaphragm Assembly
B2-12	100/110 Oilite Bearing
B2-13	200/210 Oilite Bearing
BV1-12	200 Valve Assembly
BV1-14	100 Valve Assembly
D1-12-2	210 Diaphragm, Silicone
D1-13-2	110 Diaphragm, Silicone
D1-16-2	200/225 Diaphragm, Silicone
D1-17-2	100 Diaphragm, Silicone
D1-20-2	600 Diaphragm, Silicone
D1-20-3	600 Diaphragm, Flouro-Silicone
D1-25	425 Diaphragm Assembly
DV1-12	225 Valve Assembly
EV	2 State Converter/Regulator
F2-5	Butterfly, 1.75" Diameter
F2-6	Butterfly, 2" Diameter
G1-11	100/110 Gasket, Throttle Body to Mixer
G1-13	110 Gasket, Plate to Body
G1-17	Gasket, 1" SAE Flange

<u>GILLETTE LOCATION</u> 100 N HIGHWAY 14-16 PO BOX 3200 GILLETTE, WY 82716 P: (307) 682-5262 F: (307) 682-2240	<u>OKLAHOMA LOCATION</u> 1021 NE 29 <sup>TH</sup> ST OKLAHOMA CITY, OK 73129 P: (405) 602-6927	<u>TIMCOSERVICE.COM</u> INFO@TIMCOSERVICE.COM TOLL FREE: (800) 688-4620	<b>55</b>
--	---	---	-----------

G1-18	Gasket, 1.25" SAE Flange
G1-19	Gasket, 1.50" SAE Flange
G1-20	210 Gasket, Plate to Body
G1-21	200/210 Gasket, Throttle Body to Mixer
G1-23	Gasket, 1.75" SAE Flange
G1-24	Gasket, 2" SAE Flange
G1-25	425 Gasket, Adapter to Throttle Body
G1-27	Gasket, 2.5" SAE Flange
G1-28	425 Gasket, 3" SAE Flange
G1-56	Gasket, AT2-16
G1-66	425 Gasket, Air Horn
G1-74	Gasket, Mixer to Adapter
G1-78-1	Gasket, Throttle Body to Mixer
P2-13	Cover
P2-15	Plate, Backup
P2-21	Plate, Backup
P2-22	Plate, Backup
R1-17	Ring, Air Valve
R1-19	Ring, Air Valve
R1-9	Ring, Seal Retainer, .313 Shaft
R1-30	Ring Shim
RK-B2-12	Repair Kit, 5/16 Shaft
RK-CA55	Repair Kit for CA55 Carb
RK-J-2	Repair Kit for Model J
S1-12	Screw, 8-32 X 5/16"
S1-18	Pin, Throttle Stop Screw
S1-19	Screw, 12-24 X 5/8"
S1-22	Screw, 5/32 X 1/4"
S1-28	Screw, Idle, 3/8-16 X 1-1/2" (200/210)
S1-3	Screw, 10-24 X 5/8"
S1-41	Screw, 10-24 X 1 X 3/8"
S1-63	Screw, 12-24 X 1-1/2"
S1-74	Screw, Idle, 3/8-16 X 1"
S2-13	Spring, Air Valve (110)
S2-16	Spring, Idle Screw (200/100)
S2-17	Spring, Air Valve (200/100)
S2-85	Spring, Air Valve (100)
S2-88	Spring, Idle Screw (100/110)

<p><u>GILLETTE LOCATION</u>  100 N HIGHWAY 14-16  PO BOX 3200  GILLETTE, WY 82716  P: (307) 682-5262  F: (307) 682-2240</p>	<p><u>OKLAHOMA LOCATION</u>  1021 NE 29<sup>TH</sup> ST  OKLAHOMA CITY, OK 73129  P: (405) 602-6927</p>	<p><u>TIMCOSERVICE.COM</u>  INFO@TIMCOSERVICE.COM  TOLL FREE: (800) 688-4620</p>	<h2>56</h2>
---	---	--	-------------



S3-11	Seal, 9.5mm
S5-2	Throttle Shaft, 8.0mm (.310")
S5-3	Throttle Shaft, 9.5mm (.375")

## Dry Air Cleaner Assemblies & Accessories

TAC-200-KIT	Air Cleaner Assembly with Adapter Elbow
TAC-250-KIT	Air Cleaner Assembly with Adapter Elbow
TAC-300-KIT	Air Cleaner Assembly with Adapter Elbow
TAC-200	Air Cleaner
TAC-250	Air Cleaner
TAC-300	Air Cleaner
TAC-250-BASE	Filter Base, 2.5" NPT
TAC-300-BASE	Filter Base, 3" NPT
TAC-200-TOP	Air Cleaner Top Cover
TAC-250-TOP	Air Cleaner Top Cover
TAC-300-TOP	Air Cleaner Top Cover
TACA-250	Elbow Adapter, 200/250
TACA-300	Elbow Adapter, 300
TACE-200	Air Cleaner Element, Washable
TACE-250	Air Cleaner Element, Washable
TACE-300	Air Cleaner Element, Washable
TACA-250-S	Air Cleaner Spacer
TACA-300-S	Air Cleaner Spacer

## Vortex Oil Bath Air Cleaners

S-78	Air Cleaner Assembly
S-110-E	Air Cleaner Assembly
SA-60	Air Cleaner Assembly
SA-78	Air Cleaner Assembly
SA-90	Air Cleaner Assembly
SA-110	Air Cleaner Assembly

<b>GILLETTE LOCATION</b> 100 N HIGHWAY 14-16 PO BOX 3200 GILLETTE, WY 82716 P: (307) 682-5262 F: (307) 682-2240	<b>OKLAHOMA LOCATION</b> 1021 NE 29 <sup>TH</sup> ST OKLAHOMA CITY, OK 73129 P: (405) 602-6927	<b>TIMCOSERVICE.COM</b> INFO@TIMCOSERVICE.COM TOLL FREE: (800) 688-4620	<b>57</b>
--	---	---	-----------



# Clutches

*WPT, Twin Disk, and PEC*



**PEC**  
**MANUFACTURING**

## Clutch Assemblies

C107CP	7" Clutch Pack
C107SP4	7" Clutch, Single Disc, SAE #4 Housing, Single Bearing
C107SP4-DB	7" Clutch, Single Disc, SAE #4 Housing, Double Bearing
C107SP5-DB	7" Clutch, Single Disc, SAE #5 Housing, Double Bearing
C108HP4	8" Clutch, Single Disc, SAE #4 Housing
C110CP	10" Clutch Pack
C110HP3	10" Clutch, Single Disc, SAE #3 Housing
C110HP4	10" Clutch, Single Disc, SAE #4 Housing
SP111CP	11" Clutch Pack
SP111HP2	11" Clutch, Single Disc, SAE #2 Housing
SP111HP3	11" Clutch, Single Disc, SAE #4 Housing
SP211HP2	11" Clutch, Double Disc, SAE #2 Housing
SP211HP3	11" Clutch, Double Disc, SAE #3 Housing
SP211HP3-A-62	11" Clutch, Double Disc, SAE #3 Housing (A-62 Engine)
SP114CP	14" Clutch Pack
SP114HP1	14" Clutch, Single Disc, SAE #1 Housing
SP214CP	14" Clutch Pack
SP214HP0	14" Clutch, Double Disc, SAE #0 Housing
SP314HP0	14" Clutch, Triple Disc, SAE #0 Housing

## Clutch Assemblies (Pilotless)

SP111HP3-PL	11" Clutch, Single Disc, SAE #3, Pilotless
SP211HP2-PL	11" Clutch, Single Disc, SAE #2 Housing, Pilotless
SP211HP3-PL	11" Clutch, Double Disc, SAE #3, Pilotless
SP114HP1-PL	14" Clutch, Single Disc, SAE #1, Pilotless
SP214HP0-PL	14" Clutch, Double Disc, SAE #0, Pilotless

## Friction Plates

A-3507-S	6" Clutch Plate, 3 Piece
----------	--------------------------

<b>GILLETTE LOCATION</b> 100 N HIGHWAY 14-16 PO BOX 3200 GILLETTE, WY 82716 P: (307) 682-5262 F: (307) 682-2240	<b>OKLAHOMA LOCATION</b> 1021 NE 29 <sup>TH</sup> ST OKLAHOMA CITY, OK 73129 P: (405) 602-6927	<b>TIMCOSERVICE.COM</b> INFO@TIMCOSERVICE.COM TOLL FREE: (800) 688-4620	<b>59</b>
--	---	---	-----------

A-5436	7" Clutch Plate, 1 Piece
A-5436-A	7" Clutch Plate, 2 Piece
A-5436-S	7" Clutch Plate, 3 Piece
6479-S	8" Clutch Plate, 1 Piece
5878	10" Clutch Plate, 1 Piece
5878-D	10" Clutch Plate, 2 Piece
5878-S	10" Clutch Plate, 3 Piece
5878-KEVLAR	10" Clutch Plate, 1 Piece, Kevlar
O6314F	10" Sintered Iron Clutch Plate
A-5579	11" Clutch Plate, 1 Piece
A-5579-A	11" Clutch Plate, 3 Piece
A-5579-KEVLAR	11" Clutch Plate, 1 Piece, Kevlar
O6310L	11" Sintered Iron Clutch Plate
5659-P	14" Clutch Plate, 1 Piece
5659-B	14" Clutch Plate, 3 Piece
5659-K	14" Clutch Plate, 1 Piece
5659-L	14" Clutch Plate, 3 Piece
5659-KEVLAR	14" Clutch Plate, 1 Piece, Kevlar
O5499E	14" Sintered Iron Clutch Plate. 9.25" ID
5658-C	18" Clutch Plate, 3 Piece

## Drive Rings

6661	107 Drive Ring
5805A	108 Drive Ring
6187E	110 Drive Ring
6625D	111 Drive Ring
6931T	211 Drive Ring
5712B	114 Drive Ring
5713D	214 Drive Ring

## Hub & Back Plates

6030	10" Hub & Back Plate
ZA6505A	111 Hub & Back Plate
ZA6620A	114 Hub & Back Plate

<b>GILLETTE LOCATION</b> 100 N HIGHWAY 14-16 PO BOX 3200 GILLETTE, WY 82716 P: (307) 682-5262 F: (307) 682-2240	<b>OKLAHOMA LOCATION</b> 1021 NE 29 <sup>TH</sup> ST OKLAHOMA CITY, OK 73129 P: (405) 602-6927	<b>TIMCOSERVICE.COM</b> INFO@TIMCOSERVICE.COM TOLL FREE: (800) 688-4620	<b>60</b>
--	---	---	-----------

ZA6519E	214 Hub & Back Plate
ZA6511A	314 Hub & Back Plate

## Clutch Shafts

4879	110 Clutch Shaft, Drilled
4879AU	110 Clutch Shaft, Solid
A5188	111 Clutch Shaft, Drilled
A5188AZ	111 Clutch Shaft, Solid
A5190	114 Clutch Shaft, Drilled
A5190AO	114 Clutch Shaft, Solid
A6619K	314 Clutch Shaft, Solid
A6691	211 Clutch Shaft, Drilled
A6691AC	211 Clutch Shaft, Solid
B5027A	214 Clutch Shaft, Solid
XA3026	106/107 Clutch Shaft, Single Bearing, Drilled (1-7/16")
XA3026AN	106/107 Clutch Shaft, Single Bearing, Drilled (1-3/4")
XA3026DB	106/107 Clutch Shaft, Double Bearing, Drilled (1-7/16")

## Operating Shafts

1094C	Operating Shaft (SP114, SP214, SP314)
1144AK	Operating Shaft (SPE211)
1144E	Operating Shaft (SP111, SP211)
1144F	Operating Shaft (C108, C110) #3 Housing
1144X	Operating Shaft (SPE214, SPE314) #0 Housing
1144Z	Operating Shaft (SPE114, SPE214, SPE314) #1 Housing
1580A	Operating Shaft (SP214, SP314)
2757	Operating Shaft (C106, C107, C108, C110) #4/#5 Housing

## Sliding Sleeve Assemblies

S384	Sliding Sleeve Assembly (C108, C110)
S387	Sliding Sleeve Assembly (C106, C107)
S598	Sliding Sleeve Assembly (SP214, SP314) 3.5" Bore

<b>GILLETTE LOCATION</b> 100 N HIGHWAY 14-16 PO BOX 3200 GILLETTE, WY 82716 P: (307) 682-5262 F: (307) 682-2240	<b>OKLAHOMA LOCATION</b> 1021 NE 29 <sup>TH</sup> ST OKLAHOMA CITY, OK 73129 P: (405) 602-6927	<b>TIMCOSERVICE.COM</b> INFO@TIMCOSERVICE.COM TOLL FREE: (800) 688-4620	<b>61</b>
--	---	---	-----------

S600	Sliding Sleeve Assembly (SP214) 3" Bore
S601	Sliding Sleeve Assembly (SP111)
S620	Sliding Sleeve Assembly (SP114)
S634	Sliding Sleeve Assembly (SP211)
S641	Sliding Sleeve Assembly (SPE114)
S651	Sliding Sleeve Assembly (SPE111)
S672	Sliding Sleeve Assembly (SPE214, SPE314)
S697	Sliding Sleeve Assembly (SP214, SP314) Ball Bearing Style
S670	Sliding Sleeve Assembly (SP111) Ball Bearing Style

## Brass Collars

X117	Brass Collar Assembly (SP111)
X117B14	Brass Collar Assembly (SP114, SP214, SP314)
X117C10	Brass Collar Assembly (SP211)
X117C8	Brass Collar Assembly (C106, C107, C108, C110)

## Yokes

X1037	Yoke (C106, C107, C108, C110)
X125A	Yoke (SP111)
X3507	Yoke (SP211)
X5091	Yoke (SP114, SP214, SP314)
XA6710	Yoke (SPE114)
XA6822	Yoke (SPE214, SPE314)

## Pilot Bearings

M141A	Pilot Bearing, 1pc
M163A	Pilot Bearing
M167	Pilot Bearing
M224A	Pilot Bearing, 1pc
M1985A	Pilot Bearing
M2262A	Pilot Bearing, 1pc
M2467T	Pilot Bearing, 2pc

<b>GILLETTE LOCATION</b> 100 N HIGHWAY 14-16 PO BOX 3200 GILLETTE, WY 82716 P: (307) 682-5262 F: (307) 682-2240	<b>OKLAHOMA LOCATION</b> 1021 NE 29 <sup>TH</sup> ST OKLAHOMA CITY, OK 73129 P: (405) 602-6927	<b>TIMCOSERVICE.COM</b> INFO@TIMCOSERVICE.COM TOLL FREE: (800) 688-4620	<b>62</b>
--	---	---	-----------

M2529T	Pilot Bearing, 2pc
M2713T	Pilot Bearing, 2pc
WTD-10-055	A62 Pilot Bearing, Sealed, Double Row, 72mm

## Main Bearings

M1590	Main Bearing Set (C106DB, C107DB, C108)
M177	Main Bearing Set (C106, C107)
M207	Main Bearing Set (C110, SP111)
M214	Main Bearing Set (SP214, SP314)
M215	Main Bearing Set (SP214, SP314, SPE214, SPE314)
M2196	Main Bearing Set (SP211, SPE211)
M282	Main Bearing Set (SPE114, SPE114)

## Miscellaneous Parts

1086	Shaft Nut (SP114, SPE114)
1092	Shaft Nut (SP111)
1092A	Shaft Nut (C108, C110)
1242	Stop Collar (SPE211, SPE114, SPE214, SPE314)
1442	Shaft Nut (SP314, SPE314)
1822	Level Roller Pin
2727	Shaft Nut (C106, C107)
A1587	Lock Washer (C106, C107)
A1588	Lock Washer (C108, C110, SP111)
A1589	Lock Washer (SP114, SPE114)
A1590	Shaft Washer (SP314, SPE314)
A1663	Grease Hose Assembly (C106, C107, C108C, C110C SP111)
A1663A	Grease Hose Assembly (SP211, SP114, SP214, SP314)
A211	Adjusting Yoke Assembly
A2701BD	Adjusting Lock Pin Spring (SP111, SP211, SPE211)
A2702BE	Adjusting Lock Pin Spring (SP/SPE 114, 214, 314)
B1509B	Shaft Nut (SP211, SPE211)
B1509T	Shaft Nut (SP214, SPE214)
B1511E	Lock Washer (SP211, SPE211)

<b>GILLETTE LOCATION</b> 100 N HIGHWAY 14-16 PO BOX 3200 GILLETTE, WY 82716 P: (307) 682-5262 F: (307) 682-2240	<b>OKLAHOMA LOCATION</b> 1021 NE 29 <sup>TH</sup> ST OKLAHOMA CITY, OK 73129 P: (405) 602-6927	<b>TIMCOSERVICE.COM</b> INFO@TIMCOSERVICE.COM TOLL FREE: (800) 688-4620	<b>63</b>
--	---	---	-----------

B1511L	Lock Washer (SP214, SPE214)
M2115C	Spring Washer (SP111, SP211, SPE211)
M2115D	Spring Washer (SP/SPE 114, 214, 314)
M2241	7/8" Cam Roll
M2292	3/4" Cam Roll
X3799	Hand Lever (C106, C107, C108, C110, SP111, SP/SPE211)
X7441T	Hand Lever (SP/SPE 114, 214, 314)
XA5486	Yoke (WTD-18-012)



<p><u>GILLETTE LOCATION</u> 100 N HIGHWAY 14-16 PO BOX 3200 GILLETTE, WY 82716 P: (307) 682-5262 F: (307) 682-2240</p>	<p><u>OKLAHOMA LOCATION</u> 1021 NE 29<sup>TH</sup> ST OKLAHOMA CITY, OK 73129 P: (405) 602-6927</p>	<p><u>TIMCOSERVICE.COM</u> INFO@TIMCOSERVICE.COM TOLL FREE: (800) 688-4620</p>	<p><b>64</b></p>
--	--	--	------------------



## C106 Parts

Qty.	Part Number	Description
1	1382	Adj. Lock Pin Spring
1	1965	Inspection Plate
1	2042	Adjusting Lock Pin
1	2727	Shaft Nut
1	2757	Operating Shaft
1	6939	106 Drive Ring
1	7958	SAE #5 Housing
1	A16	Adjusting Yoke Assy
1	A1587	Shaft Lock Washer
1	A1663	Grease Hose, 12"
6	A2286	Release Spring
1	A-3507-S	6" Clutch Plate, 3 pc
1	M141A	Pilot Bearing
1	M177	Main Bearing
2	M2022Z	Woodruff Key
1	M2027AN	Jam Nut
1	M2046AF	Lock Washer
1	S387	Sliding Sleeve Assy
1	X117C8	Brass Collar Assembly
1	X1037	Yoke
1	X3799	Hand Lever
1	XA3026	Drilled Shaft, 1-7/16"
1	XA3026AN	Drilled Shaft, 1-3/4"

<p><u>GILLETTE LOCATION</u>            100 N HIGHWAY 14-16            PO BOX 3200            GILLETTE, WY 82716            P: (307) 682-5262            F: (307) 682-2240</p>	<p><u>OKLAHOMA LOCATION</u>            1021 NE 29<sup>TH</sup> ST            OKLAHOMA CITY, OK 73129            P: (405) 602-6927</p>	<p><u>TIMCOSERVICE.COM</u>            INFO@TIMCOSERVICE.COM            TOLL FREE: (800) 688-4620</p>	<p><b>65</b></p>
---	---	--	------------------

## C106 Double Bearing Parts

Qty.	Part Number	Description
1	1216	Bearing Retainer Lock
1	1382	Adj. Lock Pin Spring
1	1965	Inspection Plate
1	2042	Adjusting Lock Pin
1	2727	Shaft Nut
1	2757	Operating Shaft
1	6939	106 Drive Ring
1	7X-333	Solid Shaft, 1-7/16"
1	7X-334	Sold Shaft, 1-3/4"
1	7X-334A	Drilled Shaft, 1-3/4"
1	A16	Adjusting Yoke Assy
1	A1587	Shaft Lock Washer
1	A1663	Grease Hose, 12"
6	A2286	Release Spring
1	A-3507-S	6" Clutch Plate, 3 pc
1	M141A	Pilot Bearing
2	M1590	Main Bearing
2	M2022Z	Woodruff Key
1	M2027AN	Jam Nut
1	M2046AF	Lock Washer
1	S387	Sliding Sleeve Assy
1	X117C8	Brass Collar Assembly
1	X1037	Yoke
1	X3799	Hand Lever
1	XA3026DB	Drilled Shaft, 4-7/16"

<b>GILLETTE LOCATION</b> 100 N HIGHWAY 14-16 PO BOX 3200 GILLETTE, WY 82716 P: (307) 682-5262 F: (307) 682-2240	<b>OKLAHOMA LOCATION</b> 1021 NE 29 <sup>TH</sup> ST OKLAHOMA CITY, OK 73129 P: (405) 602-6927	<b>TIMCOSERVICE.COM</b> INFO@TIMCOSERVICE.COM TOLL FREE: (800) 688-4620	<b>66</b>
--	---	---	-----------

## C107 Parts

Qty.	Part Number	Description
1	1382	Adj. Lock Pin Spring
1	1965	Inspection Plate
1	2042	Adjusting Lock Pin
1	2727	Shaft Nut
1	2757	Operating Shaft
1	6661	107 Drive Ring
1	7958	SAE #5 Housing
1	A16	Adjusting Yoke Assy
1	A1002	Snap Ring
1	A1587	Shaft Lock Washer
1	A1663	Grease Hose, 12"
6	A2286	Release Spring
1	A3087	Floating Plate
1	A3088	Hub & Back Plate
1	A-5436	7" Clutch Plate, 1 pc
1	A-5436-A	7" Clutch Plate, 2 pc
1	A-5436-S	7" Clutch Plate, 3 pc
1	M141A	Pilot Bearing
1	M177	Main Bearing
2	M2022Z	Woodruff Key
1	M2027AN	Jam Nut
1	M2046AF	Lock Washer
1	S387	Sliding Sleeve Assy
1	X117C8	Brass Collar Assembly
1	X1037	Yoke
1	X3799	Hand Lever
1	XA3026	Drilled Shaft, 1-7/16"
1	XA3026AN	Drilled Shaft, 1-3/4"

# CLUTCHES

<b>GILLETTE LOCATION</b> 100 N HIGHWAY 14-16 PO BOX 3200 GILLETTE, WY 82716 P: (307) 682-5262 F: (307) 682-2240	<b>OKLAHOMA LOCATION</b> 1021 NE 29 <sup>TH</sup> ST OKLAHOMA CITY, OK 73129 P: (405) 602-6927	<b>TIMCOSERVICE.COM</b> INFO@TIMCOSERVICE.COM TOLL FREE: (800) 688-4620	<b>67</b>
--	---	---	-----------

## C107 Double Bearing Parts

Qty.	Part Number	Description
1	1216	Bearing Retainer Lock
1	1382	Adj. Lock Pin Spring
1	1965	Inspection Plate
1	2042	Adjusting Lock Pin
1	2727	Shaft Nut
1	2757	Operating Shaft
1	6661	107 Drive Ring
1	7X-333	Solid Shaft, 1-7/16"
1	7X-334	Sold Shaft, 1-3/4"
1	7X-334A	Drilled Shaft, 1-3/4"
1	A16	Adjusting Yoke Assy
1	A1587	Shaft Lock Washer
1	A1663	Grease Hose, 12"
6	A2286	Release Spring
1	A3087	Floating Plate
1	A3088	Hub & Back Plate
1	A-5436	7" Clutch Plate, 1 pc
1	A-5436-A	7" Clutch Plate, 2 pc
1	A-5436-S	7" Clutch Plate, 3 pc
1	M141A	Pilot Bearing
2	M1590	Main Bearing
2	M2022Z	Woodruff Key
1	M2027AN	Jam Nut
1	M2046AF	Lock Washer
1	S387	Sliding Sleeve Assy
1	X117C8	Brass Collar Assembly
1	X1037	Yoke
1	X3799	Hand Lever
1	XA3026DB	Drilled Shaft, 4-7/16"

<b>GILLETTE LOCATION</b> 100 N HIGHWAY 14-16 PO BOX 3200 GILLETTE, WY 82716 P: (307) 682-5262 F: (307) 682-2240	<b>OKLAHOMA LOCATION</b> 1021 NE 29 <sup>TH</sup> ST OKLAHOMA CITY, OK 73129 P: (405) 602-6927	<b>TIMCOSERVICE.COM</b> INFO@TIMCOSERVICE.COM TOLL FREE: (800) 688-4620	<b>68</b>
--	---	---	-----------

## C108 Parts

Qty.	Part Number	Description
4	103F	Lever
1	115	Adj. Lock Pin Spring
1	1092A	Shaft Nut
1	1144F	Operating Shaft
6	1473	Release Spring
1	1990	Adjusting Yoke
1	2245	Adjusting Lock Pin
1	2757	Operating Shaft (#4, #5 housings)
1	2815	Inspection Plate
1	5805A	108 Drive Ring
1	6479-S	8" Clutch Plate, 3pc
1	A60	Adjusting Yoke Assy
1	A1588	Lock Washer
1	A1663	Grease Hose, 12"
1	A1983	Bearing Retainer Lock
1	A3826	Clutch Shaft, Drilled
4	B1535C	Cotter Pin
4	M1538D	Lever Pin
1	M163A	Pilot Bearing
2	3M1590	Main Bearing
2	M2022Z	Woodruff Key
1	M2027AN	Jam Nut
1	M2032Z	Hub Key
1	M2046AF	Lock Washer
1	S384	Sliding Sleeve Assy
1	X117C8	Brass Collar Assembly
1	X1037	Yoke
1	X3799	Hand Lever

# CLUTCHES

<b>GILLETTE LOCATION</b> 100 N HIGHWAY 14-16 PO BOX 3200 GILLETTE, WY 82716 P: (307) 682-5262 F: (307) 682-2240	<b>OKLAHOMA LOCATION</b> 1021 NE 29 <sup>TH</sup> ST OKLAHOMA CITY, OK 73129 P: (405) 602-6927	<b>TIMCOSERVICE.COM</b> INFO@TIMCOSERVICE.COM TOLL FREE: (800) 688-4620	<b>69</b>
--	---	---	-----------

## C110 Parts

Qty.	Part Number	Description
4	103F	Lever
1	115	Adj. Lock Pin Spring
1	1092A	Shaft Nut
1	1144F	Operating Shaft
1	1216	Bearing Retainer Lock
1	2245	Adjusting Lock Pin
1	2815	Inspection Plate
1	4879	Clutch Shaft, Drilled
1	4879AU	Clutch Shaft, Solid
1	5752	Floating Plate
1	5878	10" Clutch Plate, 1pc
1	5878-D	10" Clutch Plate, 2pc
1	5878-S	10" Clutch Plate, 3pc
1	6030	Hub and Back Plate
1	6187E	110 Drive Ring
1	8255	Housing, SAE #3
1	8879	Housing, SAE #4
1	A60	Adjusting Yoke Assy
6	A1069	Release Spring
1	A1588	Lock Washer
1	A1663	Grease Hose, 12"
4	B1535C	Cotter Pin
4	B1538D	Lever Pin
1	B2147	Bearing Retainer
2	M207	Main Bearing
1	M224A	Pilot Bearing, 1pc
2	M2022Z	Woodruff Key
1	M2027AN	Jam Nut
1	M2032Z	Hub Key
1	M2046AF	Lock Washer
1	M2467T	Pilot Bearing, 2pc
1	S384	Sliding Sleeve Assy
1	X117C8	Brass Collar Assembly
1	X1037	Yoke
1	X3799	Hand Lever

# CLUTCHES

<b>GILLETTE LOCATION</b> 100 N HIGHWAY 14-16 PO BOX 3200 GILLETTE, WY 82716 P: (307) 682-5262 F: (307) 682-2240	<b>OKLAHOMA LOCATION</b> 1021 NE 29 <sup>TH</sup> ST OKLAHOMA CITY, OK 73129 P: (405) 602-6927	<b>TIMCOSERVICE.COM</b> INFO@TIMCOSERVICE.COM TOLL FREE: (800) 688-4620	<b>70</b>
--	---	---	-----------

## SP111 Parts

Qty.	Part Number	Description
1	1092	Shaft Nut
1	1144E	Operating Shaft
1	1216	Bearing Retainer Lock
1	2815	Inspection Plate
1	6625D	111 Drive Ring
1	8252	Housing, SAE #3
1	A1588	Lock Washer
1	A1663	Grease Hose, 12"
1	A2701BD	Adj. Lock Pin Spring
1	A4238	Adjusting Ring
1	A5188	Clutch Shaft, Drilled
1	A5188AZ	Clutch Shaft, Solid
1	A6506B	Floating Plate
1	A-5579	11" Clutch Plate, 1pc
1	A-5579-A	11" Clutch Plate, 3 pc
3	B1304	Lever
3	B1535C	Cotter Pin
3	B1538A	Lever Pin
1	B2147	Bearing Retainer
1	B2340	Adjusting Lock Pin
2	M207	Main Bearing
1	M224A	Pilot bearing, 1 pc
2	M2022Z	Woodruff Key
1	M2027AN	Jam Nut
1	M2033BJ	Key
1	M2046AF	Lock Washer
6	M2115C	Spring Washer
1	S601	Sliding Sleeve Assy
1	X117	Brass Collar Assembly
1	X125A	Yoke
1	X3799	Hand Lever
1	ZA6505A	Hub and Back Plate

<b>GILLETTE LOCATION</b> 100 N HIGHWAY 14-16 PO BOX 3200 GILLETTE, WY 82716 P: (307) 682-5262 F: (307) 682-2240	<b>OKLAHOMA LOCATION</b> 1021 NE 29 <sup>TH</sup> ST OKLAHOMA CITY, OK 73129 P: (405) 602-6927	<b>TIMCOSERVICE.COM</b> INFO@TIMCOSERVICE.COM TOLL FREE: (800) 688-4620	<b>71</b>
--	---	---	-----------

## SP211 Parts

Qty.	Part Number	Description
1	1144E	Operating Shaft
1	1216	Bearing Retainer Lock
1	2815	Inspection Plate
2	6931T	211 Drive Ring
2	A1663A	Grease Hose, 16"
1	A2701BD	Adj. Lock Pin Spring
1	A4238	Adjusting Ring
1	A-5579	11" Clutch Plate, 1 pc
1	A-5579-A	11" Clutch Plate, 3 pc
1	A6506B	Floating Plate
1	A6690	Carrier Plate
1	A6691	Clutch Shaft, Drilled
1	A6691AC	Clutch Shaft, Solid
3	B1304	Lever
1	B1509B	Shaft Nut
1	B1511E	Lock Washer
3	B1535C	Cotter Pin
3	B1538A	Lever Pin
1	B2340	Adjusting Lock Pin
1	M224A	Pilot Bearing, 1 pc
2	M2022Z	Woodruff Key
1	M2027AN	Jam Nut
1	M2033BJ	Key
1	M2033X	Hub Key
1	M2046AF	Lock Washer
6	M2115C	Spring Washer
2	M2196	Main Bearing
1	M2467T	Pilot Bearing, 2 pc
1	S634	Sliding Sleeve Assembly
1	X117C10	Brass Collar Assembly
1	X3507	Yoke
1	X3799	Hand Lever

<b>GILLETTE LOCATION</b> 100 N HIGHWAY 14-16 PO BOX 3200 GILLETTE, WY 82716 P: (307) 682-5262 F: (307) 682-2240	<b>OKLAHOMA LOCATION</b> 1021 NE 29 <sup>TH</sup> ST OKLAHOMA CITY, OK 73129 P: (405) 602-6927	<b>TIMCOSERVICE.COM</b> INFO@TIMCOSERVICE.COM TOLL FREE: (800) 688-4620	<b>72</b>
--	---	---	-----------



## SPE211 Parts

Qty.	Part Number	Description
1	1144AK	Operating Shaft (#1 Housing)
1	1216	Bearing Retainer Lock
2	1242	Stop Collar
1	2815	Inspection Plate
1	6931T	211 Drive Ring
1	A2701BD	Adj. Lock Pin Spring
1	A4238	Adjusting Ring
1	A-5579	11" Clutch Plate, 1 pc
1	A-5579-A	11" Clutch Plate, 3 pc
1	A6506B	Floating Plate
1	A6690	Carrier Plate
1	A6691	Clutch Shaft, Drilled
1	A6691AC	Clutch Shaft, Solid
1	B1297D	Headed Pin
3	B1304	Lever
1	B1509B	Shaft Nut
1	B1511E	Lock Washer
3	B1535C	Cotter Pin
3	B1538A	Lever Pin
1	B2340	Adjusting Lock Pin
2	M2022Z	Woodruff Key
1	M2033BJ	Key
1	M2033X	Hub Key
6	M2115C	Spring Washer
2	M2196	Main Bearing
2	M2292	3/4" Cam Roll Bearing
1	M2467T	Pilot Bearing, 2 pc
1	S704	Sliding Sleeve Assembly
1	X3799	Hand Lever
1	XA4440A	Locator Assembly
1	XB3001	Yoke

# CLUTCHES

<b>GILLETTE LOCATION</b> 100 N HIGHWAY 14-16 PO BOX 3200 GILLETTE, WY 82716 P: (307) 682-5262 F: (307) 682-2240	<b>OKLAHOMA LOCATION</b> 1021 NE 29 <sup>TH</sup> ST OKLAHOMA CITY, OK 73129 P: (405) 602-6927	<b>TIMCOSERVICE.COM</b> INFO@TIMCOSERVICE.COM TOLL FREE: (800) 688-4620	<b>73</b>
--	---	---	-----------

## SP114 Parts

Qty.	Part Number	Description
1	1086	Shaft Nut
1	1094C	Operating Shaft
1	2815	Inspection Plate
1	5659-K	14" Clutch Plate, 1 pc
1	5659-L	14" Clutch Plate, 3 pc
1	5712B	114 Drive Ring
1	8424	Housing, SAE #1
1	A1589	Lock Washer
1	A1663A	Grease Hose, 16"
1	A1983	Bearing Retainer Lock
1	A2622F	Snap Ring (Shaft)
1	A2702BE	Adjusting Lock Pin Spring
1	A4241	Adjusting Ring
1	A5190	Clutch Shaft, Drilled
1	A5190AO	Clutch Shaft, Solid
1	A6512C	Floating Plate
4	B1284	Lever
4	B1535D	Cotter Pin
4	B1540A	Lever Pin
1	B2341	Adjusting Lock Pin Spring
2	M282	Main Bearing
1	M1985	Pilot Bearing, 1 pc
2	M2022Z	Woodruff Key
1	M2027AN	Jam Nut
1	M2035AB	Hub Key
1	M2046AF	Lock Washer
1	M2046L	Lock Washer
8	M2115D	Spring Washer
1	M2529T	Pilot Bearing, 2 pc
1	S620	Brass Collar Assembly
1	X117B14	Brass Collar Assembly
1	X5091	Yoke
1	X7441T	Hand Lever
3	ZA6620A	Hub and Back Plate

# CLUTCHES

<b>GILLETTE LOCATION</b> 100 N HIGHWAY 14-16 PO BOX 3200 GILLETTE, WY 82716 P: (307) 682-5262 F: (307) 682-2240	<b>OKLAHOMA LOCATION</b> 1021 NE 29 <sup>TH</sup> ST OKLAHOMA CITY, OK 73129 P: (405) 602-6927	<b>TIMCOSERVICE.COM</b> INFO@TIMCOSERVICE.COM TOLL FREE: (800) 688-4620	<b>74</b>
--	---	---	-----------

## SPE114 Parts

Qty.	Part Number	Description
1	1086	Operating Shaft (#1 Housing)
1	1144Z	Bearing Retainer Lock
2	1242	Stop Collar
1	2815	Inspection Plate
1	5659-K	14" Clutch Plate, 1 pc
1	5659-L	14" Clutch Plate, 3 pc
1	5712B	Drive Ring
1	8424	11" Clutch Plate, 1 pc
1	A1589	11" Clutch Plate, 3 pc
1	A1983	Floating Plate
1	A2622F	Carrier Plate
1	A2702BE	Clutch Shaft, Drilled
1	A4241	Clutch Shaft, Solid
1	A4441	Headed Pin
3	A5190	Lever
1	A5190AO	Shaft Nut
1	A6512C	Lock Washer
4	B1284	Cotter Pin
4	B1535D	Lever Pin
4	B1540A	Adjusting Lock Pin
1	B2341	Woodruff Key
2	M282	Key
2	M2022Z	Hub Key
1	M2035AB	Spring Washer
1	M2046L	Main Bearing
8	M2115D	3/4" Cam Roll Bearing
2	M2241	Pilot Bearing, 2 pc
1	M2529T	Sliding Sleeve Assembly
1	S641	Hand Lever
1	X7441T	Locator Assembly
1	XA4440A	Yoke
1	XA6710	Yoke
1	ZA6620A	Yoke

# CLUTCHES

<b>GILLETTE LOCATION</b> 100 N HIGHWAY 14-16 PO BOX 3200 GILLETTE, WY 82716 P: (307) 682-5262 F: (307) 682-2240	<b>OKLAHOMA LOCATION</b> 1021 NE 29 <sup>TH</sup> ST OKLAHOMA CITY, OK 73129 P: (405) 602-6927	<b>TIMCOSERVICE.COM</b> INFO@TIMCOSERVICE.COM TOLL FREE: (800) 688-4620	<b>75</b>
--	---	---	-----------

## SP214 Parts

Qty.	Part Number	Description
1	1094C	Operating Shaft (#1 Housing)
1	1580A	Operating Shaft (#0 Housing)
1	2815	Inspection Plate
2	5659-K	14" Clutch Plate, 1 pc
2	5659-L	14" Clutch Plate, 3 pc
1	5713D	214 Drive Ring
1	A1663A	Grease Hose, 16"
1	A1983	Bearing Retainer Lock
1	A2702BE	Adj. Lock Pin Spring
1	A4241	Adjusting Ring
1	A5195	Carrier Bearing Housing
1	A6512C	Floating Plate
1	A6513	Carrier Plate
4	B1284	Lever
1	B1509T	Shaft Nut
1	B1511L	Lock Washer
4	B1535D	Cotter Pin
4	B1540A	Lever Pin
1	B2341	Adjusting Lock Pin
1	B5027A	Clutch Shaft, Solid
2	M215	Main Bearing
2	M2022Z	Woodruff Key
1	M2027AN	Jam Nut
1	M2035AC	Hub Key
1	M2046AF	Lock Washer
8	M2115D	Spring Washer
1	M2529T	Pilot Bearing, 2 pc
1	S598	Sliding Sleeve Assembly
1	X117B14	Brass Collar Assembly
1	X5091	Yoke
1	X7441T	Hand Lever
1	ZA6519E	Hub & Back Plate

# CLUTCHES

<b>GILLETTE LOCATION</b> 100 N HIGHWAY 14-16 PO BOX 3200 GILLETTE, WY 82716 P: (307) 682-5262 F: (307) 682-2240	<b>OKLAHOMA LOCATION</b> 1021 NE 29 <sup>TH</sup> ST OKLAHOMA CITY, OK 73129 P: (405) 602-6927	<b>TIMCOSERVICE.COM</b> INFO@TIMCOSERVICE.COM TOLL FREE: (800) 688-4620	<b>76</b>
--	---	---	-----------

## SPE214 Parts

Qty.	Part Number	Description
1	1144X	Operating Shaft (#0 Housing)
1	1144Z	Operating Shaft (#1 Housing)
2	1242	Stop Collar
1	2815	Inspection Plate
2	5659-K	14" Clutch Plate, 1pc
2	5659-L	14" Clutch Plate, 3pc
1	5713D	214 Drive Ring
1	A1983	Bearing Retainer Lock
1	A2702BE	Adj. Lock Pin Spring
1	A4241	Adjusting Ring
1	A5195	Carrier Bearing Housing
1	A6512C	Floating Plate
1	A6513	Carrier Plate
4	B1284	Lever
1	B1509T	Shaft Nut
1	B1511L	Lock Washer
4	B1535D	Cotter Pin
4	B1284	Lever
1	B2341	Adjusting Lock Pin
1	B5027A	Clutch Shaft, Solid
2	M215	Main Bearing
2	M2022Z	Woodruff Key
1	M2035AC	Hub Key
8	M2115D	Spring Washer
2	M2241	7/8" Cam Roll Bearing
1	M2529T	Pilot Bearing, 2 pc
1	S672	Sliding Sleeve Assembly
1	X7441T	Hand Lever
1	XA4440A	Locator Assembly
1	XA6822	Yoke
1	ZA6519E	Hub & Back Plate

# CLUTCHES

<b>GILLETTE LOCATION</b> 100 N HIGHWAY 14-16 PO BOX 3200 GILLETTE, WY 82716 P: (307) 682-5262 F: (307) 682-2240	<b>OKLAHOMA LOCATION</b> 1021 NE 29 <sup>TH</sup> ST OKLAHOMA CITY, OK 73129 P: (405) 602-6927	<b>TIMCOSERVICE.COM</b> INFO@TIMCOSERVICE.COM TOLL FREE: (800) 688-4620	<b>77</b>
--	---	---	-----------

## SP314 Parts

Qty.	Part Number	Description
1	1094C	Operating Shaft (#0 Housing)
1	1442	Shaft Nut
1	1580A	Operating Shaft (#1 Housing)
1	2815	Inspection Plate
3	5659-K	14" Clutch Plate, 1pc
3	5659-L	14" Clutch Plate, 3pc
1	A1590	Shaft Washer
1	A1663A	Grease Hose, 16"
1	A1983	Bearing Retainer Lock
1	A2702BE	Adjusting Lock Pin Spring
1	A4241	Adjusting Ring
1	A5194	Carrier Bearing Housing
1	A6512C	Floating Plate
2	A6513	Carrier Plate
1	A6518A	314 Drive Ring
1	A6619K	Clutch Shaft, Solid
4	B1284	Lever
4	B1535D	Cotter Pin
4	B1540A	Lever Pin
1	B2341	Adjusting Lock Pin
2	M215	Main Bearing
2	M2022Z	Woodruff Key
1	M2027AN	Jam Nut
1	M2033BK	Hub Key
1	M2046AF	Lock Washer
8	M2115D	Spring Washer
1	M2713T	Pilot Bearing, 2 pc
1	S598	Sliding Sleeve Assembly
1	X117B14	Brass Collar Assembly
1	X5091	Yoke
1	X7441T	Hand Lever
1	ZA6511A	Hub & Back Plate

<b>GILLETTE LOCATION</b> 100 N HIGHWAY 14-16 PO BOX 3200 GILLETTE, WY 82716 P: (307) 682-5262 F: (307) 682-2240	<b>OKLAHOMA LOCATION</b> 1021 NE 29 <sup>TH</sup> ST OKLAHOMA CITY, OK 73129 P: (405) 602-6927	<b>TIMCOSERVICE.COM</b> INFO@TIMCOSERVICE.COM TOLL FREE: (800) 688-4620	<b>78</b>
--	---	---	-----------

## SPE314 Parts

Qty.	Part Number	Description
1	1144X	Operating Shaft (#0 Housing)
1	1144Z	Operating Shaft (#1 Housing)
2	1242	Stop Collar
1	1442	Shaft Nut
1	2815	Inspection Plate
2	5659-K	14" Clutch Plate, 1pc
1	5659-L	14" Clutch Plate, 3pc
1	A1590	Shaft Washer
1	A1983	Bearing Retainer Lock
1	A2702BE	Adjusting Lock Pin Spring
1	A4241	Adjusting Ring
1	A5194	Carrier Bearing Housing
1	A6512C	Floating Plate
4	A6513	Center Plate
1	A6518A	314 Drive Ring
1	A6619K	Clutch Shaft, Solid
4	B1284	Lever
4	B1535D	Cotter Pin
4	B1540A	Lever Pin
1	B2341	Adjusting Lock Pin
1	M215	Main Bearing
2	M2022Z	Woodruff Key
2	M2115D	Spring Washer
1	M2241	7/8" Cam Roll Bearing
8	M2713T	Pilot Bearing, 2 pc
2	S672	Sliding Sleeve Assembly
1	X7441T	Hand Lever
1	XA4440A	Locator Assembly
1	XA6822	Yoke
1	ZA6511A	Hub & Back Plate

# CLUTCHES

<b>GILLETTE LOCATION</b> 100 N HIGHWAY 14-16 PO BOX 3200 GILLETTE, WY 82716 P: (307) 682-5262 F: (307) 682-2240	<b>OKLAHOMA LOCATION</b> 1021 NE 29 <sup>TH</sup> ST OKLAHOMA CITY, OK 73129 P: (405) 602-6927	<b>TIMCOSERVICE.COM</b> INFO@TIMCOSERVICE.COM TOLL FREE: (800) 688-4620	<b>79</b>
--	---	---	-----------



# Miscellaneous

*Ignition -Lufkin – Gemini – Ford – Waukesha - Witte*



## Ignition Parts

101-065	Pick-Up Coil Assembly
101-076	Magnet Bar 8 1/4
101-092	Pick-Up Coil Assembly
1187	Ignition Coil (501-061)
1197	Wiring Harness
181-001-X	1 Cylinder Electronic Box
260D-8810	Generator
400A-8811	Trigger Bar
400A-8813	Charging Bar
400A8814	Module Box
FM601-NB	Ignition System

## Witte Engine Parts

TRS-E20-STD	E-20 Piston Ring Set
47200822	RC98 Head Gasket
47200844	RC98 Valve cover Gasket

## Lufkin Engine Parts

238-795-GHD	Lufkin 795 Head Gasket, Heavy Duty
860-LC-795	Lufkin 795 Rod Packing (Takes 2 per engine)
TRS-795	Lufkin 795 Piston Ring Set (10 rings)

<p><u>GILLETTE LOCATION</u>          100 N HIGHWAY 14-16          PO BOX 3200          GILLETTE, WY 82716          P: (307) 682-5262          F: (307) 682-2240</p>	<p><u>OKLAHOMA LOCATION</u>          1021 NE 29<sup>TH</sup> ST          OKLAHOMA CITY, OK 73129          P: (405) 602-6927</p>	<p><u>TIMCOSERVICE.COM</u>          INFO@TIMCOSERVICE.COM          TOLL FREE: (800) 688-4620</p>	<p><b>81</b></p>
---	---	--	------------------

## Ford Governor

BD540B	Ford Governor Assembly
--------	------------------------

## Gemini G26

G26 HEAD KIT	G26 Cylinder Head Repair Kit
310-355	G26 Valve Cover Gasket

## Waukesha

208615	Valve Cover Gasket 330
A76423C	Valve Cover Gasket 145/F817
TK-1197	F-1197 Ignition Adapter Kit, with Zinc Hub
TK-1197-S	F-1197 Ignition Adapter Kit, with Steel Hub
TK-1197-1	Ignition Adapter Housing
TK-1197-2	Ignition Adapter Hub, Zinc
TK-1197-2-S	Ignition Adapter Hub, Steel
TK-1905	F-1905 Ignition Adapter Kit, with Zinc Hub
TK-1905-S	F-1905 Ignition Adapter Kit, with Steel Hub
TK-1905-3	Ignition Adapter Spacer

<p><u>GILLETTE LOCATION</u>          100 N HIGHWAY 14-16          PO BOX 3200          GILLETTE, WY 82716          P: (307) 682-5262          F: (307) 682-2240</p>	<p><u>OKLAHOMA LOCATION</u>          1021 NE 29<sup>TH</sup> ST          OKLAHOMA CITY, OK 73129          P: (405) 602-6927</p>	<p><u>TIMCOSERVICE.COM</u>          INFO@TIMCOSERVICE.COM          TOLL FREE: (800) 688-4620</p>	<p><b>82</b></p>
---	---	--	------------------



Gaskets

## Ajax

A-1181	Exhaust Flange Gasket, 6"
A-1181-8	Exhaust Flange Gasket, 8"
A-1669-B	Cover Plate Gasket
A-1717	DP-60/80 Rear Cover Gasket
A-2227-A	Bearing Support Gasket
A-2233-T	DP80/115 Side Cover Gasket
A-2247-D	Spiral Gear Cover Gasket
A-2269	Layshaft Stand Gasket
A-2569	Water Connector Gasket
A-2588-A	Mixer Box to Air Horn Gasket, DP-80/115
A-2764-A	Bearing Support Cover Gasket
A-2781	Water Inlet Gasket, DP-115
A-2804-G	DP-80 Grafoil Head Gasket
A-2804-GHD	DP-80 Heavy Duty, Grafoil Head Gasket
A-2838-B	Lubrication Bracket Gasket
A-2839	Bearing Support Cover Gasket
A-2846-A	Gasket, Flat Round
A-3126	Control Box Gasket
A-3131	Layshaft Gasket
A-3139	Cover Gasket
A-3167-A	Control Box Cover Oval Gasket
A-3172-A	Main Bearing Support Gasket, E42
A-3174-A	Cylinder to Bed Gasket, E-42
A-3175	Magneto Drive Gasket
A-3176	CMA Mixer Box Gasket
A-3177-A	Gasket Breather Plate
A-3178-A	Gasket-Side Cover FWS
A-3180	Gasket-Top Cylinder Cover Gasket
A-3181	Exhaust Flange Gasket, 4"
A-3183	Control Box Cover Gasket
A-3184-A	Cover Plate Gasket
A-3185	Gasket-Lubricator Bracket
A-3204-F	E-42 Grafoil Head Gasket

<u>GILLETTE LOCATION</u> 100 N HIGHWAY 14-16 PO BOX 3200 GILLETTE, WY 82716 P: (307) 682-5262 F: (307) 682-2240	<u>OKLAHOMA LOCATION</u> 1021 NE 29 <sup>TH</sup> ST OKLAHOMA CITY, OK 73129 P: (405) 602-6927	<u>TIMCOSERVICE.COM</u> INFO@TIMCOSERVICE.COM TOLL FREE: (800) 688-4620	<b>84</b>
--	---	---	-----------



A-3204-GHD	E-42 Heavy Duty, Grafoil Head Gasket
A-3205	8-1/2 X 10 CMA 2 Piece Head Plate Gasket
A-3427	Air Cleaner to Air Horn Gasket
A-3465	Top Cylinder Gasket
A-3650-F	EA-22 Grafoil Head Gasket
A-3650-GHD	EA-22 Heavy Duty, Grafoil Head Gasket
A-3672	Bearing Support Gasket
A-3676	Mixer Valve Gasket
A-3678	Layshaft Tube Flange Gasket
A-3680	Top Cylinder Cover Gasket
A-3719	Mixer Gasket
A-3720	Airhorn Gasket to Mixer Gasket
A-3750-F	EA-30 Grafoil Head Gasket
A-3750-GHD	EA-30 Heavy Duty, Grafoil Head Gasket
A-3752	Water Neck Gasket
A-3788	DP-81 Grafoil Head Gasket
A-3834-GHD	DP-60 Heavy Duty, Grafoil Head Gasket
A-3834-H	DP-60 Grafoil Head Gasket
A-3887	Exhaust Flange Gasket, 5"
A-3888-A	DP-60 Cylinder Gasket
A-3897	Side Cover Gasket, Clutch Side
A-3898	E-42/DP-60 Mixer Box Gasket
A-3899	Airhorn Gasket to Mixer Gasket
A-3954-F	WL Grafoil Head Gasket
A-4075-1	Fan Gasket
A-433-T	DP-115 Grafoil Head Gasket
BM-10022	Copper Fuel Injection Gasket
BM-10108-A	Layshaft Tube Seal
BM-10500	DP-80 Stuffing Box Gasket
BM-10501	EA-30 Stuffing Box Gasket
BM-10502	E-42/DP-60 Stuffing Box Gasket
B-1062	Clean Out Hole Gasket
M-1550-F	E-30 Grafoil Head Gasket
M-1550-GHD	E-30 Heavy Duty, Grafoil Head Gasket
M-2632	Governor Gasket 3 Bolt
M-2654	Gasket-Large Side Cover CS
M-2660-2	Water Connector Gasket
TGS-154	7-1/4 x 8 CMA/EA-30 Cylinder Change Gasket Set

<u>GILLETTE LOCATION</u> 100 N HIGHWAY 14-16 PO BOX 3200 GILLETTE, WY 82716 P: (307) 682-5262 F: (307) 682-2240	<u>OKLAHOMA LOCATION</u> 1021 NE 29 <sup>TH</sup> ST OKLAHOMA CITY, OK 73129 P: (405) 602-6927	<u>TIMCOSERVICE.COM</u> INFO@TIMCOSERVICE.COM TOLL FREE: (800) 688-4620	<b>85</b>
--	---	---	-----------

TGS-156	8-1/2 x 10 CMA/E-42 Cylinder Change Gasket Set
TGS-157	DP-60 Cylinder Change Gasket Set
TGS-158	DP-80 Cylinder Change Gasket Set
TGS-6780-A	6-1/2 x 8 CMA-EA-22 Overhaul Gasket
TGS-6789-A-C	7-1/4 x 8 CMA/EA-30 Overhaul Gasket Set
TGS-6790-B	8-1/2 x 10 CMA/E-42 Overhaul Gasket Set
TGS-7043-A	DP-60 Overhaul Gasket Set
TGS-6979-C	DP-80 Overhaul Gasket Set

## Arrow

173-46	C-46/66/96/106 Screen Cover Gasket
208-46	C-46/66/96 Governor Housing Gasket
208-106	C-106 Governor Housing Gasket
215-46	C-46/66/96/106 Governor Gasket
22-46	C-46/66 Rear Inspection Cover Gasket
22-96	C-96/106 Rear Inspection Cover Gasket
238-46	C-46 Head Gasket
238-46-GHD	C-46 Head Gasket, Heavy Duty Grafoil
238-66	C-66 Head Gasket
238-66-GHD	C-66 Head Gasket, Heavy Duty Grafoil
238-96	C-96 Head Gasket
238-96-GHD	C-96 Head Gasket, Heavy Duty Grafoil
238-106	C-106 Head Gasket
238-106-GHD	C-106 Head Gasket, Heavy Duty Grafoil
24-46	C-46 Top Crankcase Cover Gasket
24-66	C-66 Top Crankcase Cover Gasket
24-96	C-96/106 Top Crankcase Cover Gasket
246-46	C-46 Outer Valve Cover Gasket
246-66	C-66 Outer Valve Cover Gasket
246-96	C-96 Outer Valve Cover Gasket
246-106	C-106 Outer Valve Cover Gasket
246-A-106	C-106 Inner Valve Cover Gasket
289-46	C-46/66/96/106 Fuel Pump Cover Gasket
314-46	C-46/66/96/106 Water Filler Gasket
32-46	C-46/66 Compression Relief Cover Gasket
32-96	C-96/106 Compression Relief Cover Gasket

<b>GILLETTE LOCATION</b> 100 N HIGHWAY 14-16 PO BOX 3200 GILLETTE, WY 82716 P: (307) 682-5262 F: (307) 682-2240	<b>OKLAHOMA LOCATION</b> 1021 NE 29 <sup>TH</sup> ST OKLAHOMA CITY, OK 73129 P: (405) 602-6927	<b>TIMCOSERVICE.COM</b> INFO@TIMCOSERVICE.COM TOLL FREE: (800) 688-4620	<b>86</b>
--	---	---	-----------

330-11-46	C-46/66/96/106 Magneto Bracket Gasket
330-17-46	C-46/66/96/106 Magneto Drive Gasket
336-46	C-46 Condenser Gasket
336-66	C-66/96 Condenser Gasket
336-106	C-106 Condenser Gasket
346-46	C-46/66/96/106 Gasket, Water Filler
347-46	C-46 Hopper to Block Gasket
347-66	C-66 Hopper to Block Gasket
347-96	C-96/106 Hopper to Block Gasket
35-46	C-46 Oil Level Gauge Gasket
498-T-1	C-46/66/96/106 Side Gasket
498-T-2	Fan Hub Gasket Large ID
8-46	Fan Hub Gasket Small ID
ACE-409-46NS	C-46/66/96/106 Gasket-Sediment Bowl
TGS-46	C-46 Overhaul Gasket Set
TGS-46-HD	C-46 Overhaul Gasket Set, Heavy Duty
TGS-66	C-66 Overhaul Gasket Set
TGS-66-HD	C-66 Overhaul Gasket Set, Heavy Duty
TGS-96	C-96 Overhaul Gasket Set
TGS-96-HD	C-96 Overhaul Gasket Set, Heavy Duty
TGS-106	C-106 Overhaul Gasket Set
TGS-106-HD	C-106 Overhaul Gasket Set, Heavy Duty
TVGS-46	C-46 Valve Grind Gasket Set
TVGS-46-HD	C-46 Valve Grind Gasket Set, Heavy Duty
TVGS-66	C-66 Valve Grind Gasket Set
TVGS-66-HD	C-66 Valve Grind Gasket Set, Heavy Duty
TVGS-96	C-96 Valve Grind Gasket Set
TVGS-96-HD	C-96 Valve Grind Gasket Set, Heavy Duty
TVGS-106	C-106 Valve Grind Gasket Set
TVGS-106-HD	C-106 Valve Grind Gasket Set, Heavy Duty

## Fairbanks-Morse

1119-208	Radiator Hopper Hand Hole Cover Gasket (Small)
1119-A-208	Radiator Hopper Hand Hole Cover Gasket (Large)
1286-118	ZC-118 Crankcase Cover Gasket

<u>GILLETTE LOCATION</u> 100 N HIGHWAY 14-16 PO BOX 3200 GILLETTE, WY 82716 P: (307) 682-5262 F: (307) 682-2240	<u>OKLAHOMA LOCATION</u> 1021 NE 29 <sup>TH</sup> ST OKLAHOMA CITY, OK 73129 P: (405) 602-6927	<u>TIMCOSERVICE.COM</u> INFO@TIMCOSERVICE.COM TOLL FREE: (800) 688-4620	<b>87</b>
--	---	---	-----------



1286-208	ZC-208 Crankcase Cover Gasket
1286-346	ZC-346 Crankcase Cover Gasket
1286-503	ZC-503 Crankcase Cover Gasket
1892-118	ZC-118 Base End Cover Gasket
1892-346	ZC-346 Base End Cover Gasket
1898-118	ZC-118 Governor Bearing Housing Gasket
1898-208	ZC-208 Governor Bearing Housing Gasket
1898-346	ZC-346 Governor Bearing Housing Gasket
1898-503	ZC-503 Governor Bearing Housing Gasket
1899-118	ZC-118 Governor Bearing Housing Gasket Opposite
1899-208	ZC-208 Governor Bearing Housing Gasket Opposite
1899-346	ZC-346 Governor Bearing Housing Gasket Opposite
1899-503	ZC-503 Governor Bearing Housing Gasket Opposite
190-118-GHD	ZC-118 Head Gasket, Heavy Duty Grafoil
190-208-GHD	ZC-208 Head Gasket, Heavy Duty Grafoil
190-346-GHD	ZC-346 Head Gasket, Heavy Duty Grafoil
190-503-GHD	ZC-503 Head Gasket, Heavy Duty Grafoil
190-739-GHD	ZC-739 Head Gasket, Heavy Duty Grafoil
191-118	ZC-118 Water Hopper Gasket
191-208	ZC-208 Water Hopper Gasket
191-346	ZC-346 Water Hopper Gasket
191-503	ZC-503 Water Hopper Gasket
192-346	ZC-346 Carburetor Gasket
192-739	ZC-739 Carburetor Gasket
193-346	ZC-346 Cylinder to Base Gasket
193-503	ZC-503 Cylinder to Base Gasket
194-346	ZC-346/503 Water Reservoir Gasket
2025-118	ZC-118/208 Magneto Gear Closure Gasket
2025-346	ZC-346/503 Magneto Gear Closure Gasket
2340-118	ZC-118/208 Governor Cover Gasket
237-118	ZC-118/208 Fuel Mixer Cover Gasket
237-346	ZC-346/503/739 Fuel Mixer Cover Gasket
247-118	ZC-118/208 Air Valve Gasket
249-118/208	Carburetor to Head Gasket
407-118	ZC-118 Cylinder Cover Bolt Gasket
407-346	ZC-346/503/739 Cylinder Cover Bolt Gasket
5914-118	ZC-118/208 Governor Housing Cover Gasket
5914-A-346	ZC-346/503/739 Governor Housing Cover Gasket

<u>GILLETTE LOCATION</u> 100 N HIGHWAY 14-16 PO BOX 3200 GILLETTE, WY 82716 P: (307) 682-5262 F: (307) 682-2240	<u>OKLAHOMA LOCATION</u> 1021 NE 29 <sup>TH</sup> ST OKLAHOMA CITY, OK 73129 P: (405) 602-6927	<u>TIMCOSERVICE.COM</u> INFO@TIMCOSERVICE.COM TOLL FREE: (800) 688-4620	<b>88</b>
--	---	---	-----------



6147-118	ZC-118 Condenser Gasket
6147-208	ZC-208 Condenser Gasket
6147-346	ZC-346 Condenser Gasket
6147-503	ZC-503 Condenser Gasket
6147-739	ZC-739 Condenser Gasket
A-990-118	Cylinder to Base Oil Gauge Gasket
TGS-208	ZC-208 Overhaul Gasket Set
TGS-346	ZC-346 Overhaul Gasket Set
TGS-503	ZC-503 Overhaul Gasket Set

## Turbo

189-0855	Turbo screen gasket
----------	---------------------

## Lufkin

238-795-GHD	Head Gasket 795, Heavy Duty
-------------	-----------------------------

## Gemini

310-355	G26 Valve Cover Gasket
---------	------------------------

## IMPCO

G1-11	100/110 Gasket, Throttle Body to Mixer
G1-13	110 Gasket, Plate to Body
G1-18	Gasket, 1.25" SAE Flange
G1-19	Gasket, 1.50" SAE Flange
G1-20	210 Gasket, Plate to Body
G1-21	200/210 Gasket, Throttle Body to Mixer
G1-23	Gasket, 1.75" SAE Flange
G1-24	Gasket, 2" SAE Flange
G1-25	425 Gasket, Adapter to Throttle Body

<b>GILLETTE LOCATION</b> 100 N HIGHWAY 14-16 PO BOX 3200 GILLETTE, WY 82716 P: (307) 682-5262 F: (307) 682-2240	<b>OKLAHOMA LOCATION</b> 1021 NE 29 <sup>TH</sup> ST OKLAHOMA CITY, OK 73129 P: (405) 602-6927	<b>TIMCOSERVICE.COM</b> INFO@TIMCOSERVICE.COM TOLL FREE: (800) 688-4620	<b>89</b>
--	---	---	-----------



G1-28	425 Gasket, 3" SAE Flange
G1-56	Gasket, AT2-16
G1-66	425 Gasket, Air Horn
G1-74	Mixer to Adapter Gasket



<u>GILLETTE LOCATION</u> 100 N HIGHWAY 14-16 PO BOX 3200 GILLETTE, WY 82716 P: (307) 682-5262 F: (307) 682-2240	<u>OKLAHOMA LOCATION</u> 1021 NE 29 <sup>TH</sup> ST OKLAHOMA CITY, OK 73129 P: (405) 602-6927	<u>TIMCOSERVICE.COM</u> INFO@TIMCOSERVICE.COM TOLL FREE: (800) 688-4620	<b>90</b>
--	---	---	-----------